

1124 1-1/2" Wide General Purposes Caster Series



NBR (Milling black) Wheel Diameter x Wheel Width 100 × 37mm

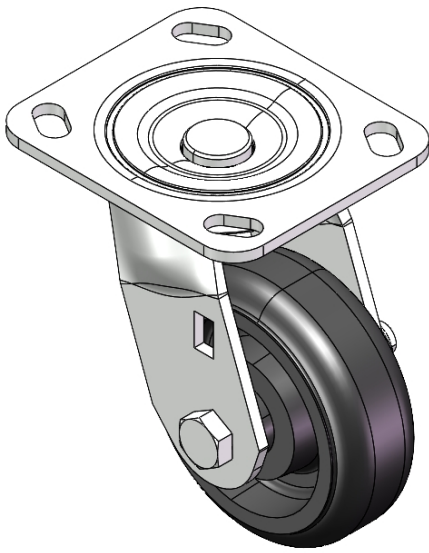
EAN

YJ-11240400042013

Swivel Caster, Top Plate Riveted and Stamping with 85 x 70mm (3-3/8" x 2-3/4") Bolt Hole Spacing Mounting Type. Zine-Plated, Top Plate (4.5T) Mounting Type mechanism. Cast Iron Wheel Center, High-Quality Resilient Rubber tread. Iron black, Bearing—Ball Bearing.

Wheel Tread: high-quality elastic rubber  
Wheel Center: cast iron core

Drawings are for reference only and may differ from the product



Picture may differ from original product

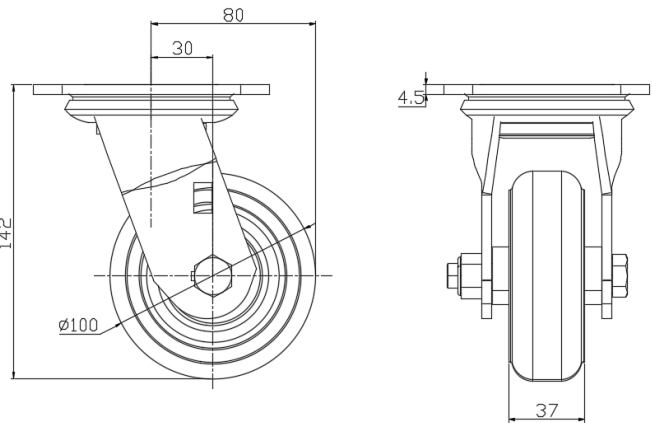
Technical Data

<input checked="" type="radio"/> Metric <input type="radio"/> Imperial	
Wheel Diameter	100mm
Wheel Width	37mm
Wheel Bearing	Wheels With Ball Bearings
Plate Size	115 x 100mm
Bolt Hole Spacing	85 x 70mm
Plate Hole	20 x 11mm
Offset	30mm
Swivel Interference	160mm
Overall Height	142mm
Swivel Radius	80mm
Hardness Of Tread	85±5° Shore A
Load Capacity (Dynamic)	150kgs
Load Capacity (Static)	225kgs
Temperature	-20°C to +80°C
Fork Type	Swivel Caster
Stainless	N/A
Electrical Conductivity	N/A
Anti-Static	N/A
Weight	2.04kgs
Standard	ISO22883

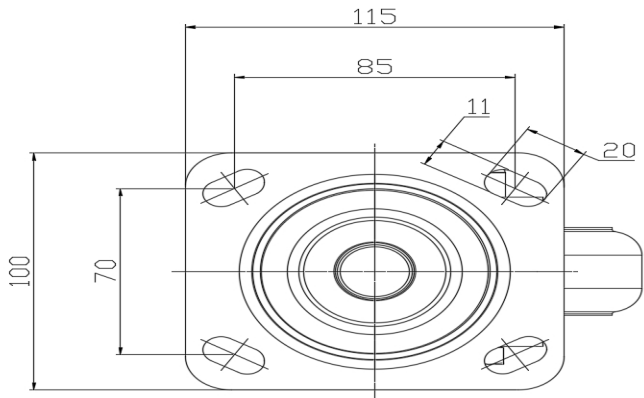
Advantages at a glance

Rolling Resistance	● ● ● ○ ○
Operating Noise	● ● ● ● ○
Floor Surface Preservation	● ● ● ● ○

Dimensions



Mounting



\* For any deviation between metric and imperial spec, please refer to the metric spec.