



1124 1-1/2" Wide General Purposes Caster Series

NBR (Milling black) Wheel Diameter x Wheel Width 100 × 37mm

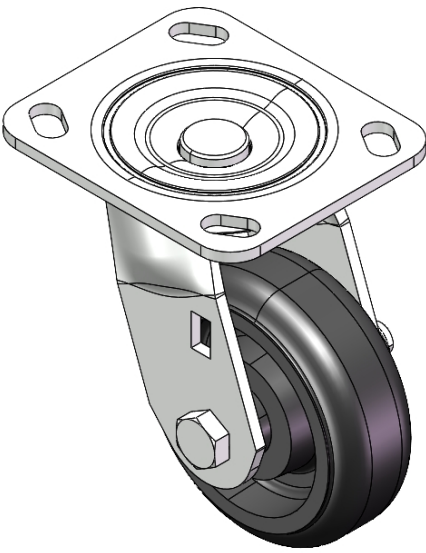
EAN

YJ-11240400042013

Swivel Caster, Top Plate Riveted and Stamping with 85 x 70mm (3-3/8" x 2-3/4") Bolt Hole Spacing Mounting Type. Zine-Plated, Top Plate (4.5T) Mounting Type mechanism. Cast Iron Wheel Center, High-Quality Resilient Rubber tread. Iron black, Bearing—Ball Bearing.

Wheel Tread: high-quality elastic rubber
Wheel Center: cast iron core

Drawings are for reference only and may differ from the product



Picture may differ from original product

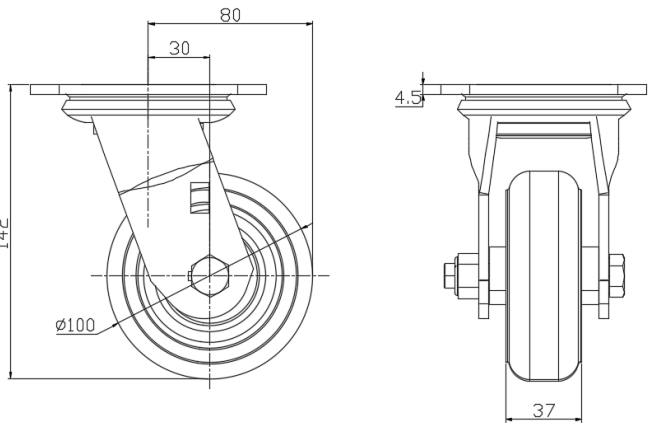
Technical Data

<input checked="" type="radio"/> Imperial <input type="radio"/> Metric	
Wheel Diameter	4 "
Wheel Width	1-1/2 "
Wheel Bearing	Wheels With Ball Bearings
Plate Size	4-9/16 " x 4 "
Bolt Hole Spacing	3-3/8 " x 2-3/4 "
Plate Hole	13/16 " x 3/8 "
Offset	1-3/16 "
Swivel Interference	6-3/8 "
Overall Height	5-5/8 "
Swivel Radius	3-3/16 "
Hardness Of Tread	85±5° Shore A
Load Capacity (Dynamic)	331lbs
Load Capacity (Static)	496lbs
Temperature	-4°F to +176°F
Fork Type	Swivel Caster
Stainless	N/A
Electrical Conductivity	N/A
Anti-Static	N/A
Weight	4.5lbs
Standard	ISO22883

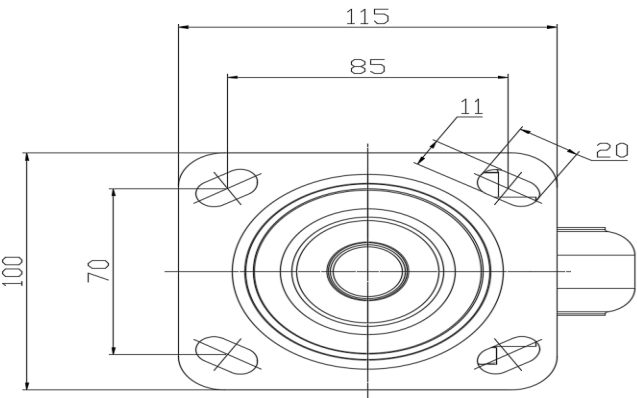
Advantages at a glance

Rolling Resistance	● ● ● ○ ○
Operating Noise	● ● ● ● ○
Floor Surface Preservation	● ● ● ● ○

Dimensions



Mounting



* For any deviation between metric and imperial spec, please refer to the metric spec.