

1124 1-1/2" Wide General Purposes Caster Series



PU (red flat) Wheel Diameter × Wheel Width 125 × 40 mm

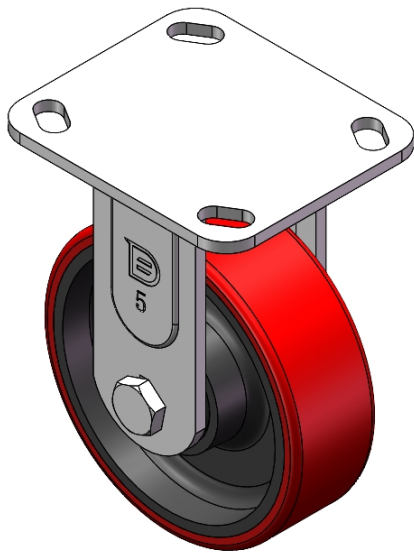
EAN

YJ-11240500331013

Rigid Caster, Welded Caster Fork 85 x 70mm (3-3/8" x 2-3/4") Bolt Hole Spacing Zine-Plated, Top Plate (4.5T) Mounting Type system Cast Iron Wheel Center with High Quality Polyurethane tread Red Cast Iron finish, Ball Bearing.

Wheel tread: Made of high-quality polyurethane  
Wheel Center: cast iron core

Drawings are for reference only and may differ from the product



Picture may differ from original product

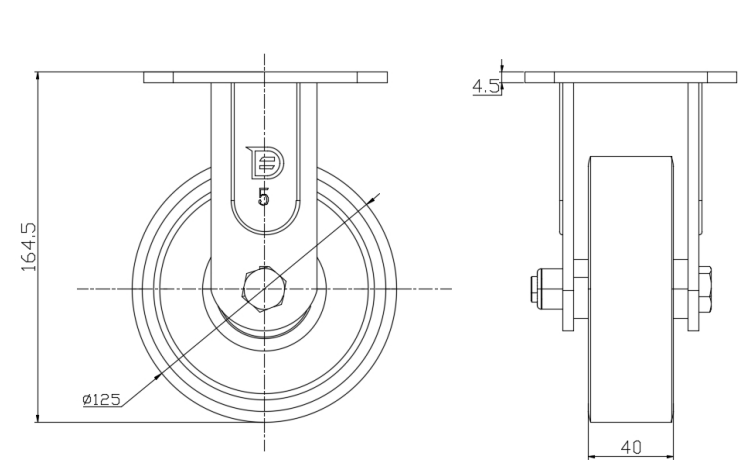
Technical Data

|  |                           |
|--|---------------------------|
| <input checked="" type="radio"/> Metric <input type="radio"/> Imperial |                           |
| Wheel Diameter   | 125mm                     |
| Wheel Width  | 40mm                      |
| Wheel Bearing  | Wheels With Ball Bearings |
| Plate Size   | 115 x 100mm               |
| Bolt Hole Spacing  | 85 x 70mm                 |
| Plate Hole   | 20 x 11mm                 |
| Overall Height   | 164.5mm                   |
| Hardness Of Tread  | 93±5° Shore A             |
| Load Capacity (Dynamic)  | 250kgs                    |
| Load Capacity (Static)   | 375kgs                    |
| Temperature  | -20°C to +70°C            |
| Fork Type  | Rigid Caster              |
| Stainless  | N/A                       |
| Electrical Conductivity  | N/A                       |
| Anti-Static  | N/A                       |
| Weight   | 2.06kgs                   |
| Standard   | ISO22883                  |

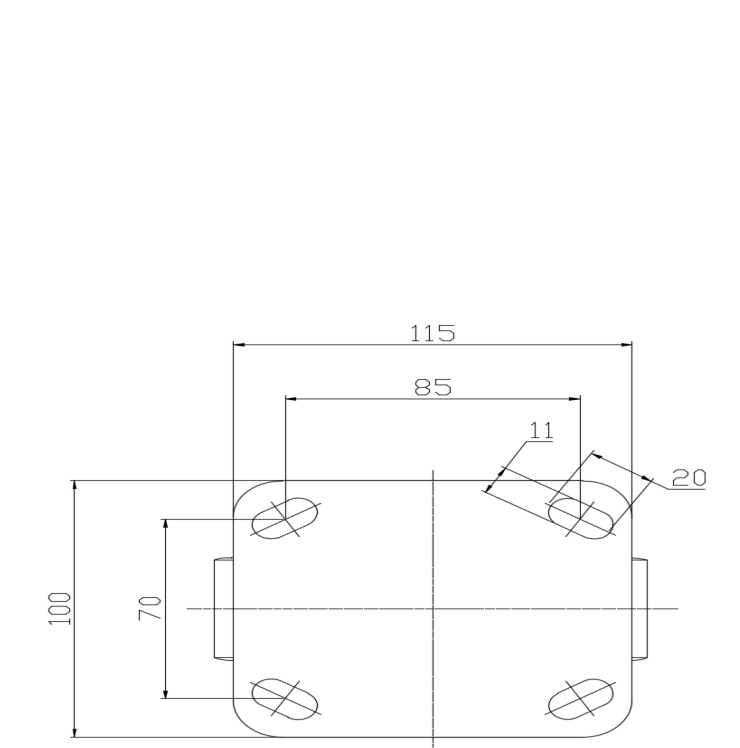
Advantages at a glance

|                            |             |
|----------------------------|-------------|
| Rolling Resistance         | ● ● ● ○ ○   |
| Operating Noise            | ● ● ● ● ○   |
| Floor Surface Preservation | ● ● ● ● ● ○ |

Dimensions



Mounting



\* For any deviation between metric and imperial spec, please refer to the metric spec.