

1124 1-1/2" Wide General Purposes Caster Series



PU (red flat) Wheel Diameter × Wheel Width 125 × 40 mm

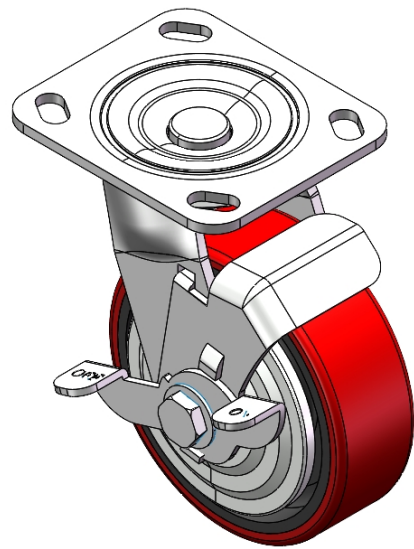
EAN

YJ-11240500334913

Side brake Caster with Locking system. Top Plate Riveted and Stamping - D-shaped. Hole Zine-Plated, Top Plate (4.5T) Mounting Type system Cast Iron Wheel Center with High Quality Polyurethane tread Red Cast Iron finish, Bearing - Ball Bearing.

Wheel tread: Made of high-quality polyurethane  
Wheel Center: cast iron core

Drawings are for reference only and may differ from the product



Picture may differ from original product

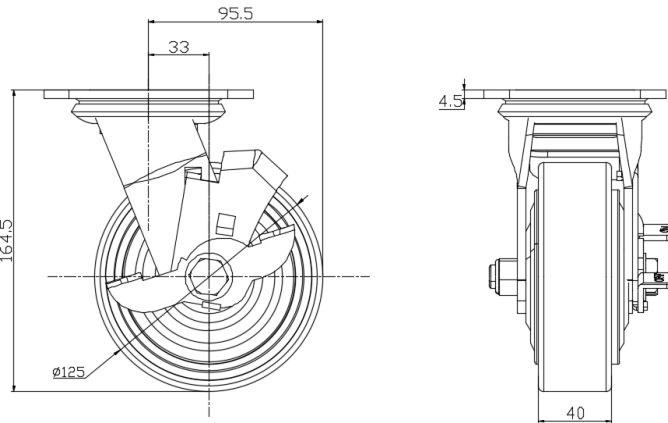
Technical Data

<input checked="" type="radio"/> Metric <input type="radio"/> Imperial	
Wheel Diameter	125mm
Wheel Width	40mm
Wheel Bearing	Wheels With Ball Bearings
Plate Size	115 x 100mm
Bolt Hole Spacing	85 x 70mm
Plate Hole	20 x 11mm
Offset	33mm
Swivel Interference	191mm
Overall Height	164.5mm
Swivel Radius	95.5mm
Hardness Of Tread	93±5° Shore A
Load Capacity (Dynamic)	250kgs
Load Capacity (Static)	375kgs
Temperature	-20°C to +70°C
Fork Type	Swivel Caster With Side Brake
Stainless	N/A
Electrical Conductivity	N/A
Anti-Static	N/A
Weight	2.74kgs
Standard	ISO22883

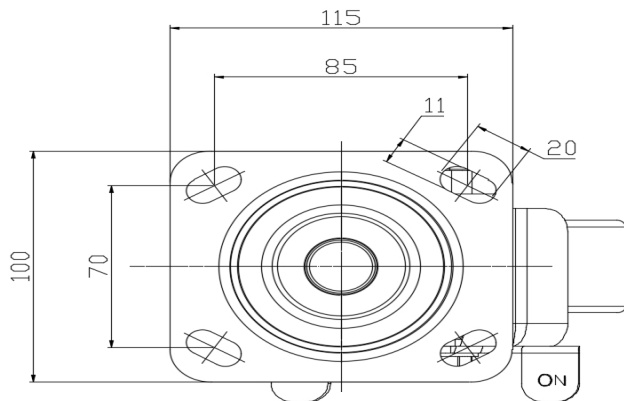
Advantages at a glance

Rolling Resistance	● ● ● ○ ○
Operating Noise	● ● ● ● ○
Floor Surface Preservation	● ● ● ● ○

Dimensions



Mounting



\* For any deviation between metric and imperial spec, please refer to the metric spec.