



1124 1-1/2" Wide General Purposes Caster Series

PU (red flat) Wheel Diameter × Wheel Width 125 × 40 mm

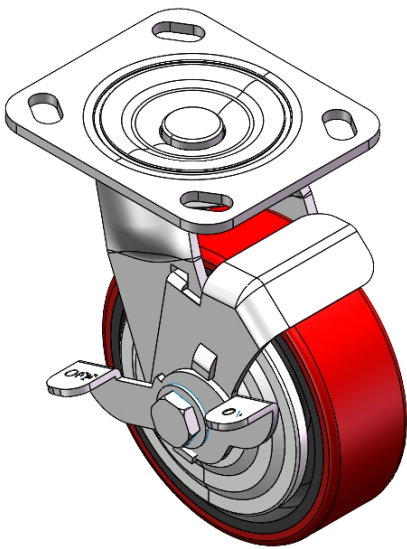
EAN

YJ-11240500334913

Side brake Caster with Locking system. Top Plate Riveted and Stamping - D-shaped. Hole Zine-Plated, Top Plate (4.5T) Mounting Type system Cast Iron Wheel Center with High Quality Polyurethane tread Red Cast Iron finish, Bearing - Ball Bearing.

Wheel tread: Made of high-quality polyurethane  
Wheel Center: cast iron core

Drawings are for reference only and may differ from the product



Picture may differ from original product

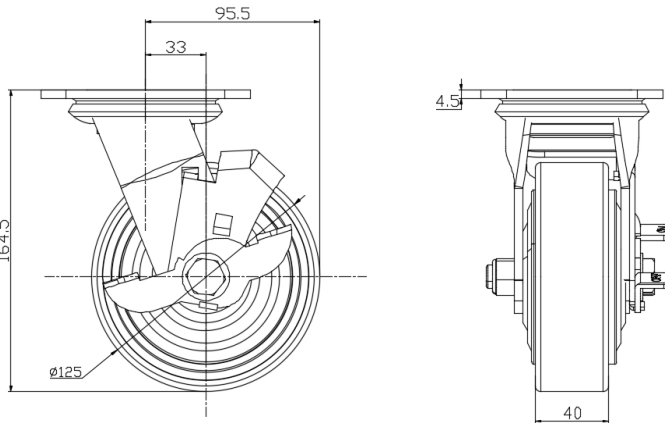
Technical Data

<input checked="" type="radio"/> Imperial <input type="radio"/> Metric	
Wheel Diameter	5 "
Wheel Width	1-5/8 "
Wheel Bearing	Wheels With Ball Bearings
Plate Size	4-9/16 " x 4 "
Bolt Hole Spacing	3-3/8 " x 2-3/4 "
Plate Hole	13/16 " x 3/8 "
Offset	1-5/16 "
Swivel Interference	7-9/16 "
Overall Height	6-1/2 "
Swivel Radius	3-13/16 "
Hardness Of Tread	93±5° Shore A
Load Capacity (Dynamic)	551lbs
Load Capacity (Static)	827lbs
Temperature	-4°F to +158°F
Fork Type	Swivel Caster With Side Brake
Stainless	N/A
Electrical Conductivity	N/A
Anti-Static	N/A
Weight	6.0lbs
Standard	ISO22883

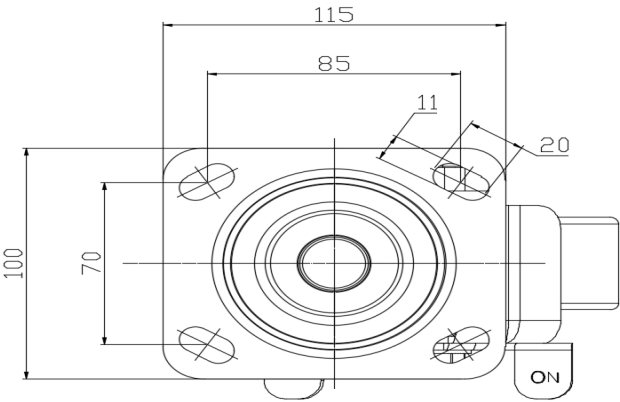
Advantages at a glance

Rolling Resistance	● ● ● ○ ○
Operating Noise	● ● ● ● ○
Floor Surface Preservation	● ● ● ● ○

Dimensions



Mounting



\* For any deviation between metric and imperial spec, please refer to the metric spec.