



1124 1-1/2" Wide General Purposes Caster Series

W Resolute (black, dark gray) Wheel Diameter × Wheel Width 150 x 38mm

EAN

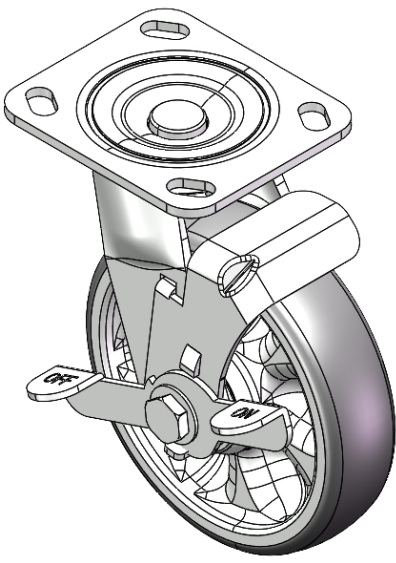
YJ-11240600454013

Side Brake Caster with With locking system. Top Plate with Riveted Stamping bracket and 85 x 70mm (3-3/8" x 2-3/4") Bolt Hole Spacing.  
Zine-Plated, Top Plate (4.5T) Mounting Type system.  
Reinforced impact-resistant polypropylene Wheel Center with High-Quality Reinforced Polypropylene Rubber (TPR) Wheel Tread.  
Dark gray finish, Bearing with Ball Bearings.

Wheel tread: Thermoplastic rubber elastomer (TPR)

Wheel Center: Made of high-quality impact-resistant polypropylene

Drawings are for reference only and may differ from the product



Picture may differ from original product

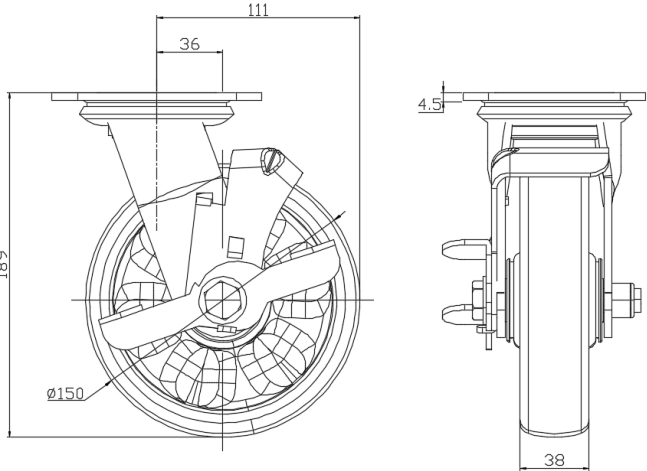
Technical Data

<input checked="" type="radio"/> Imperial <input type="radio"/> Metric	
Wheel Diameter	6 "
Wheel Width	1-1/2 "
Wheel Bearing	Wheels With Ball Bearings
Plate Size	4-9/16 " x 4 "
Bolt Hole Spacing	3-3/8 " x 2-3/4 "
Plate Hole	13/16 " x 3/8 "
Offset	1-7/16 "
Swivel Interference	222
Overall Height	7-1/2 "
Swivel Radius	4-7/16 "
Hardness Of Tread	72±5° Shore A
Load Capacity (Dynamic)	397lbs
Load Capacity (Static)	595lbs
Temperature	-4°F to +140°F
Fork Type	Swivel Caster With Side Brake
Stainless	N/A
Electrical Conductivity	N/A
Anti-Static	N/A
Weight	4.5lbs
Standard	ISO22883

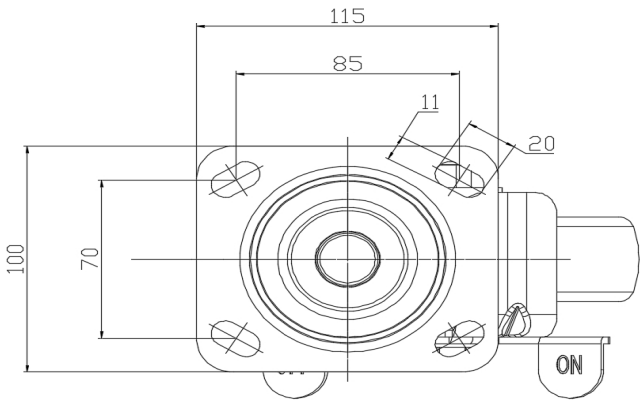
Advantages at a glance

Rolling Resistance	● ● ● ● ●
Operating Noise	● ● ● ● ●
Floor Surface Preservation	● ● ● ● ●

Dimensions



Mounting



\* For any deviation between metric and imperial spec, please refer to the metric spec.