

1124 1-1/2" Wide General Purposes Caster Series

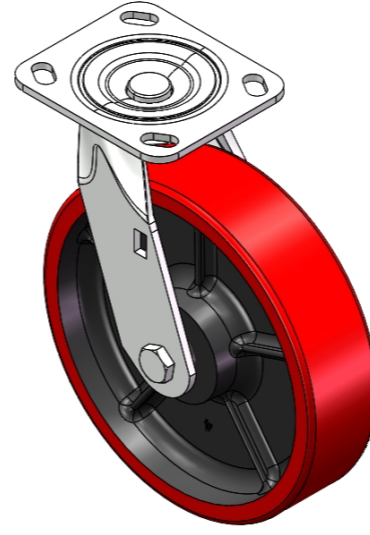


PU (red flat) Wheel Diameter × Wheel Width 200 × 50mm

EAN

YJ-11240800332013

Swivel Caster with Riveted Fork and Stamping Fork - 85 x 70mm (3-3/8" x 2-3/4") Bolt Hole Spacing Zine-Plated, Fork-mounted (4.5T) Mounting Type system Cast Iron Wheel Center with High Quality Polyurethane tread Red Cast Iron finish, Bearing - Ball Bearing.



Wheel tread: Made of high-quality polyurethane
Wheel Center: cast iron core

Drawings are for reference only and may differ from the product

Picture may differ from original product

Technical Data

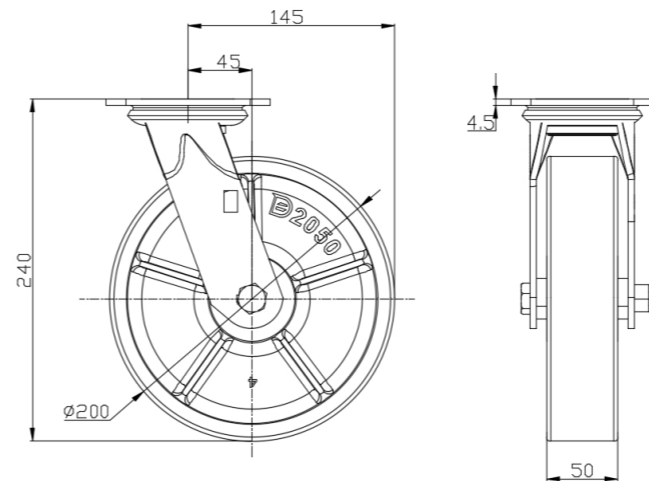
Metric Imperial

Wheel Diameter	200mm
Wheel Width	50mm
Wheel Bearing	Wheels With Ball Bearings
Plate Size	115 x 100mm
Bolt Hole Spacing	85 x 70mm
Plate Hole	20 x 11mm
Offset	45mm
Swivel Interference	290mm
Overall Height	240mm
Swivel Radius	145mm
Hardness Of Tread	93±5° Shore A
Load Capacity (Dynamic)	400kgs
Load Capacity (Static)	600kgs
Temperature	-20°C to +70°C
Fork Type	Swivel Caster
Stainless	N/A
Electrical Conductivity	N/A
Anti-Static	N/A
Weight	4.47kgs
Standard	ISO22883

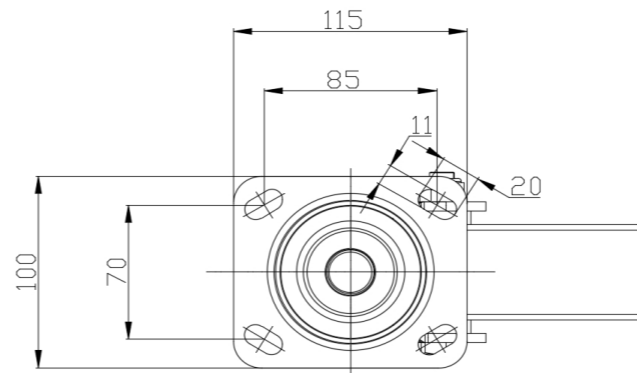
Advantages at a glance

Rolling Resistance	● ● ● ○ ○
Operating Noise	● ● ● ● ○
Floor Surface Preservation	● ● ● ● ○

Dimensions



Mounting



* For any deviation between metric and imperial spec, please refer to the metric spec.