

1124 1-1/2" Wide General Purposes Caster Series



Flat Free Tire Wheel Diameter × Wheel Width 208 x53.5 mm

D

YJ-11240800431013

Rigid Caster, Welded Caster Fork 85 x 70mm (3-3/8" x 2-3/4") Bolt Hole Spacing Zine-Plated, Top Plate (4.5T) Mounting Type system Q235 Wheel Hub with High-Quality Resilient Rubber tread Black, Bearing with Chrome steel Ball bearing.

Wheel surface: high-quality elastic rubber  
Wheel Center: iron core

Drawings are for reference only and may differ from the product



Picture may differ from original product

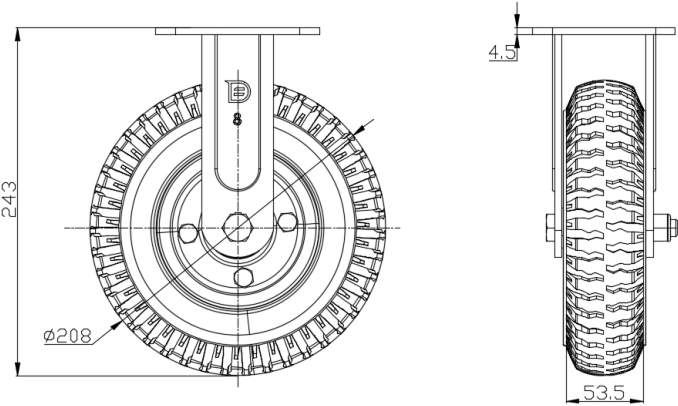
Technical Data

<input checked="" type="radio"/> Metric <input type="radio"/> Imperial	
Wheel Diameter	208mm
Wheel Width	53.5mm
Wheel Bearing	Wheels With Ball Bearings
Plate Size	115 x 100mm
Bolt Hole Spacing	85 x 70mm
Plate Hole	20 x 11mm
Overall Height	243mm
Hardness Of Tread	82±5° Shore D
Load Capacity (Dynamic)	150kgs
Load Capacity (Static)	225kgs
Temperature	-25°C to +80°C
Fork Type	Rigid Caster
Stainless	N/A
Electrical Conductivity	N/A
Anti-Static	N/A
Weight	3.42kgs
Standard	ISO22883

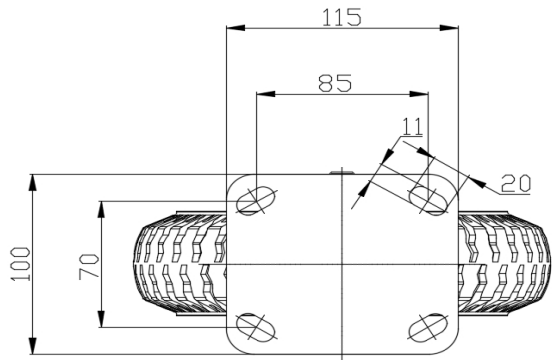
Advantages at a glance

Rolling Resistance	● ● ● ● ●
Operating Noise	● ● ○ ○ ○
Floor Surface Preservation	● ● ○ ○ ○

Dimensions



Mounting



\* For any deviation between metric and imperial spec, please refer to the metric spec.