



1124 1-1/2" Wide General Purposes Caster Series

Flat Free Tire Wheel Diameter × Wheel Width 208 x53.5 mm

D

YJ-11240800431013

Rigid Caster, Welded Caster Fork 85 x 70mm (3-3/8" x 2-3/4") Bolt Hole Spacing Zine-Plated, Top Plate (4.5T) Mounting Type system Q235 Wheel Hub with High-Quality Resilient Rubber tread Black, Bearing with Chrome steel Ball bearing.

Wheel surface: high-quality elastic rubber
Wheel Center: iron core

Drawings are for reference only and may differ from the product



Picture may differ from original product

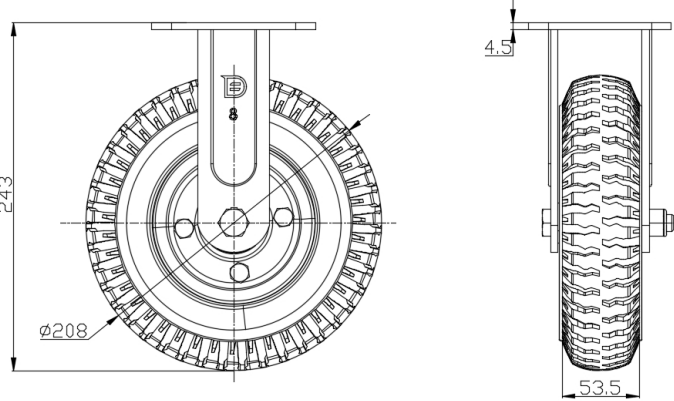
Technical Data

<input checked="" type="radio"/> Imperial <input type="radio"/> Metric	
Wheel Diameter	208mm
Wheel Width	53.5mm
Wheel Bearing	Wheels With Ball Bearings
Plate Size	4-9/16 " x 4 "
Bolt Hole Spacing	3-3/8 " x 2-3/4 "
Plate Hole	13/16 " x 3/8 "
Overall Height	9-5/8 "
Hardness Of Tread	82±5° Shore D
Load Capacity (Dynamic)	331lbs
Load Capacity (Static)	496lbs
Temperature	-13°F to +176°F
Fork Type	Rigid Caster
Stainless	N/A
Electrical Conductivity	N/A
Anti-Static	N/A
Weight	7.5lbs
Standard	ISO22883

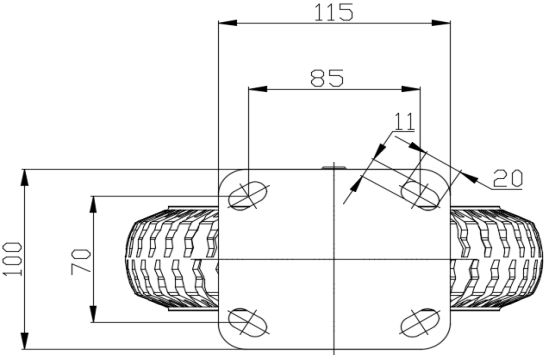
Advantages at a glance

Rolling Resistance	● ● ● ● ●
Operating Noise	● ● ○ ○ ○
Floor Surface Preservation	● ● ○ ○ ○

Dimensions



Mounting



* For any deviation between metric and imperial spec, please refer to the metric spec.