



1129 Medical Caster Series

Rubber Wheel Diameter × Wheel Width 100 x 30.5mm

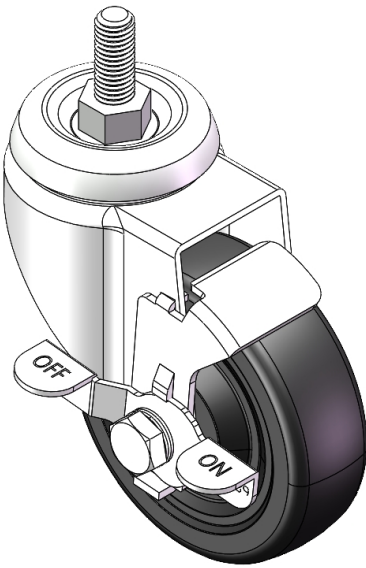
EAN

YJ-11290400066033

Side Brake Locking system. Threaded Riveted Stamping Fork - M12-P1.75 Extended control lever surface, Mounting Type - Threaded Stem device Reinforced Polypropylene, High-Quality Resilient Rubber Wheel Tread Wheels - Plain Bearing

Wheel Tread: high quality elastic rubber
Wheel Center: Thermoplastic (PA6)

Drawings are for reference only and may differ from the product



Picture may differ from original product

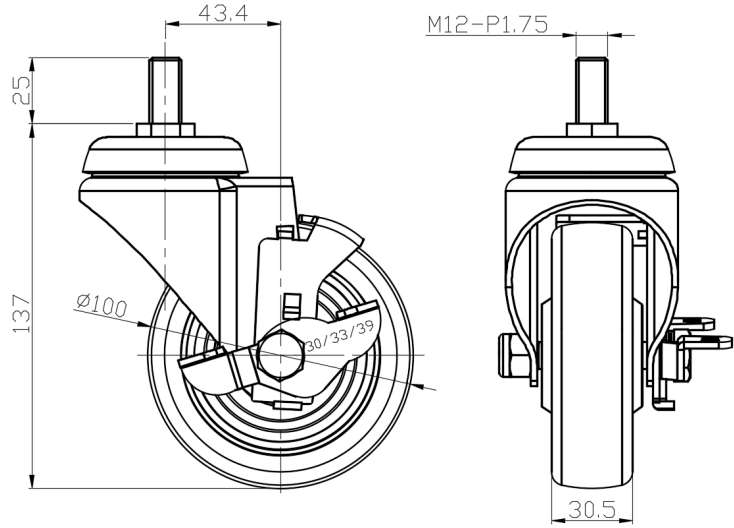
Technical Data

<input checked="" type="radio"/> Imperial <input type="radio"/> Metric	
Wheel Diameter	4 "
Wheel Width	1-1/4 "
Wheel Bearing	Wheel With Plain Bearing
Threaded Stem	M12-P1.75
Threaded Size	1-3/16 "
Offset	1-3/4 "
Swivel Interference	7-15/16 "
Overall Height	5-1/2 "
Swivel Radius	4 "
Hardness Of Tread	80±5° Shore A
Load Capacity (Dynamic)	176lbs
Load Capacity (Static)	265lbs
Temperature	-4°F to +248°F
Fork Type	Swivel Caster With Side Brake
Stainless	N/A
Electrical Conductivity	N/A
Anti-Static	N/A
Weight	2.1lbs
Standard	ISO22883

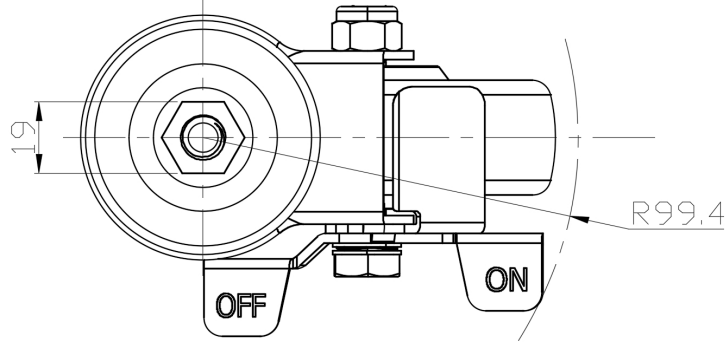
Advantages at a glance

Rolling Resistance	● ● ● ○ ○
Operating Noise	● ● ● ● ○
Floor Surface Preservation	● ● ● ● ○

Dimensions



Mounting



* For any deviation between metric and imperial spec, please refer to the metric spec.