



1129 Medical Caster Series

MRC (Transparent) Wheel Diameter × Wheel Width 100 x 35mm

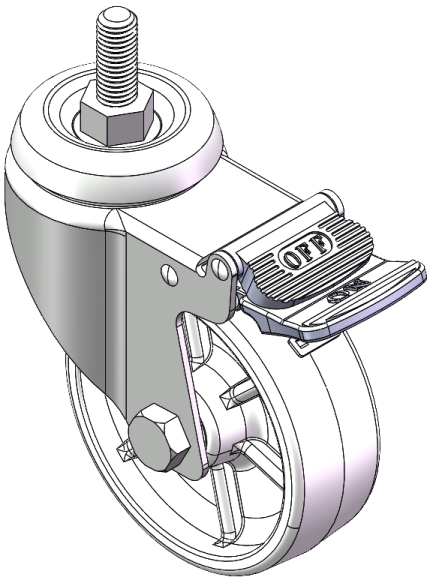
EAN

YJ-11290400076053

Casters with Total Brakes and Locking system. Threaded Stamping Fork - M12-P1.75
Extended control lever surface, Mounting Type - Threaded Stem device Reinforced Polypropylene and Wheel Tread Transparent, wheel - Plain Bearing type

Wheel tread: Thermoplastic (PA6)
Wheel Center: Thermoplastic (PA6)

Drawings are for reference only and may differ from the product



Picture may differ from original product

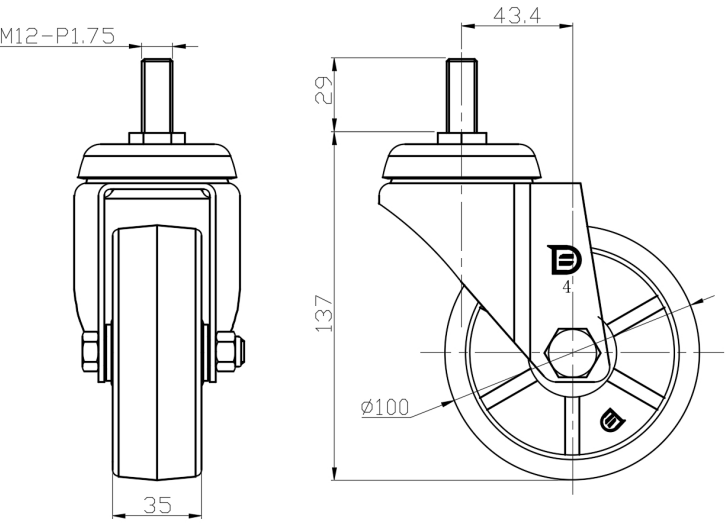
Technical Data

<input checked="" type="radio"/> Metric <input type="radio"/> Imperial	
Wheel Diameter	100mm
Wheel Width	35mm
Wheel Bearing	Wheel With Plain Bearing
Threaded Stem	M12-P1.75
Threaded Size	29mm
Offset	43.4mm
Swivel Interference	188mm
Overall Height	137mm
Swivel Radius	94mm
Hardness Of Tread	75±5° Shore D
Load Capacity (Dynamic)	200kgs
Load Capacity (Static)	300kgs
Temperature	-20°C to +80°C
Fork Type	Swivel Caster With Total Brake
Stainless	N/A
Electrical Conductivity	N/A
Anti-Static	N/A
Weight	0.69kgs
Standard	ISO22883

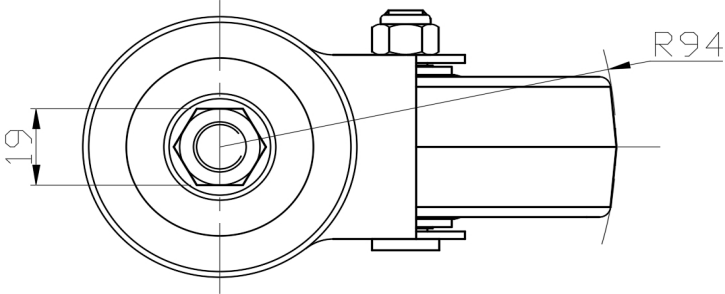
Advantages at a glance

Rolling Resistance	● ● ● ● ●
Operating Noise	● ● ○ ○ ○
Floor Surface Preservation	● ● ○ ○ ○

Dimensions



Mounting



* For any deviation between metric and imperial spec, please refer to the metric spec.