

1139 Medium Duty General Purposes Caster Series



Rubber Wheel Diameter × Wheel Width 75 x 30mm

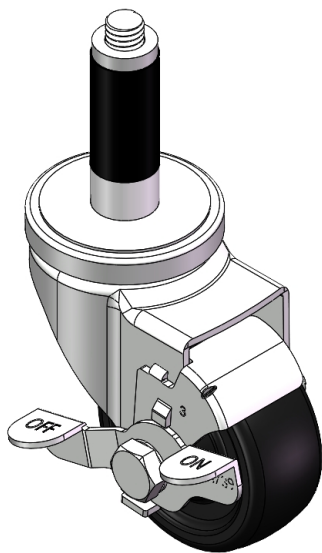
EAN

YJ-11390300066113

Casters with Side Brakes and With locking system. Threaded Stem Riveted Pressed Fork – 1/2"-13" Zine-Plated, expansion Mounting Type (Ø21.6-Ø24) Reinforced Polypropylene Wheel Center, High-Quality Resilient Rubber Wheel Tread Bearing – Plain Bearing

Wheel surface: high-quality elastic rubber
Wheel Center: Thermoplastic (PA6)

Drawings are for reference only and may differ from the product



Picture may differ from original product

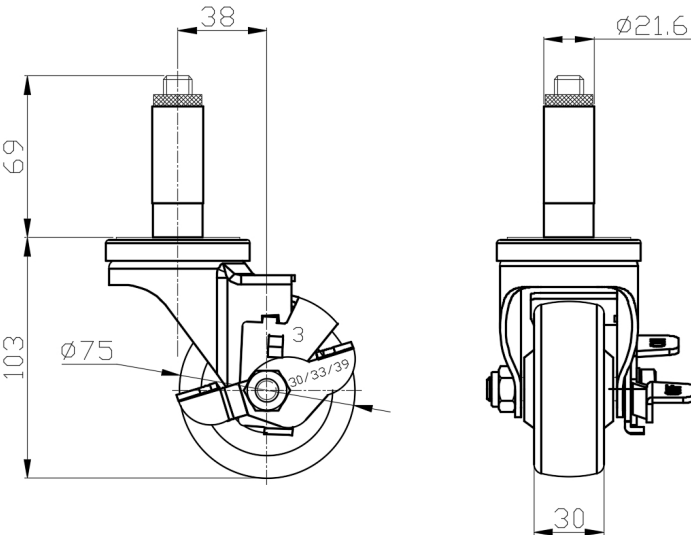
Technical Data

<input checked="" type="radio"/> Metric <input type="radio"/> Imperial	
Wheel Diameter	75mm
Wheel Width	30mm
Wheel Bearing	Wheel With Plain Bearing
Expandable Stem	21.6 x 69mm
Offset	38mm
Swivel Interference	160mm
Overall Height	103mm
Swivel Radius	80mm
Hardness Of Tread	80±5° Shore A
Load Capacity (Dynamic)	70kgs
Load Capacity (Static)	105kgs
Temperature	-20°C to +120°C
Fork Type	Swivel Caster With Side Brake
Stainless	N/A
Electrical Conductivity	N/A
Anti-Static	N/A
Weight	0.80kgs
Standard	ISO22883

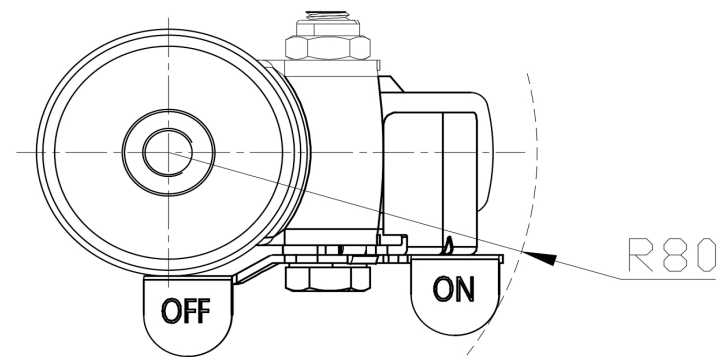
Advantages at a glance

Rolling Resistance	● ● ● ○ ○
Operating Noise	● ● ● ● ○
Floor Surface Preservation	● ● ● ● ○

Dimensions



Mounting



* For any deviation between metric and imperial spec, please refer to the metric spec.