



1139 Medium Duty General Purposes Caster Series

Rubber Wheel Diameter × Wheel Width 75 x 30mm

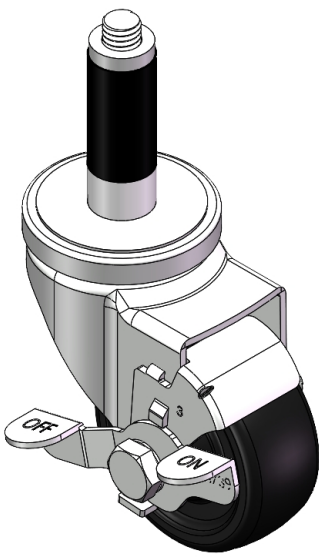
EAN

YJ-11390300066113

Casters with Side Brakes and With locking system. Threaded Stem Riveted Pressed Fork – 1/2"-13" Zine-Plated, expansion Mounting Type (Ø21.6-Ø24) Reinforced Polypropylene Wheel Center, High-Quality Resilient Rubber Wheel Tread Bearing – Plain Bearing

Wheel surface: high-quality elastic rubber
Wheel Center: Thermoplastic (PA6)

Drawings are for reference only and may differ from the product



Picture may differ from original product

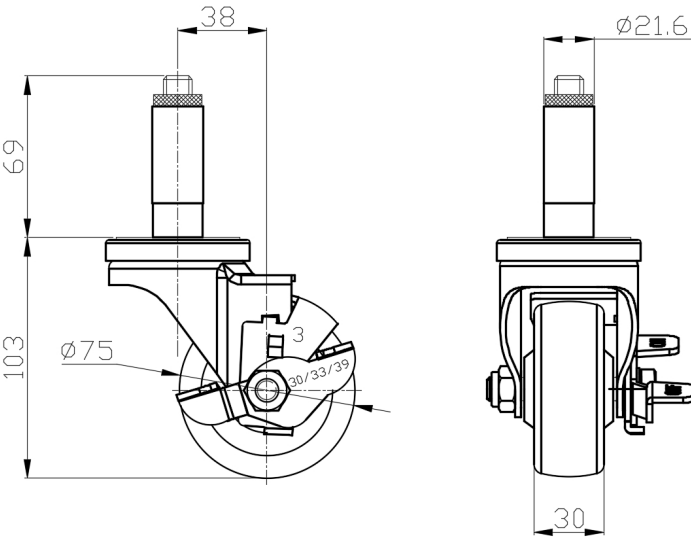
Technical Data

<input checked="" type="radio"/> Imperial <input type="radio"/> Metric	
Wheel Diameter	3 "
Wheel Width	1-3/16 "
Wheel Bearing	Wheel With Plain Bearing
Expandable Stem	7/8 " x 2-3/4 "
Offset	1-1/2 "
Swivel Interference	6-3/8 "
Overall Height	4-1/16 "
Swivel Radius	3-3/16 "
Hardness Of Tread	80±5° Shore A
Load Capacity (Dynamic)	154lbs
Load Capacity (Static)	231lbs
Temperature	-4°F to +248°F
Fork Type	Swivel Caster With Side Brake
Stainless	N/A
Electrical Conductivity	N/A
Anti-Static	N/A
Weight	1.8lbs
Standard	ISO22883

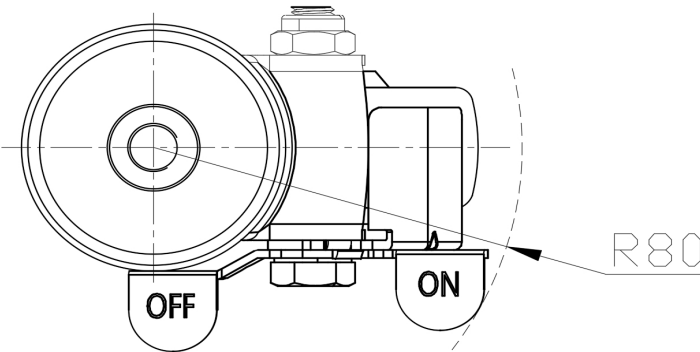
Advantages at a glance

Rolling Resistance	● ● ● ○ ○
Operating Noise	● ● ● ● ○
Floor Surface Preservation	● ● ● ● ○

Dimensions



Mounting



* For any deviation between metric and imperial spec, please refer to the metric spec.