

1139 Medium Duty General Purposes Caster Series



PPR E-Conductive (black-gray) Wheel Diameter × Wheel Width 75 x 31mm

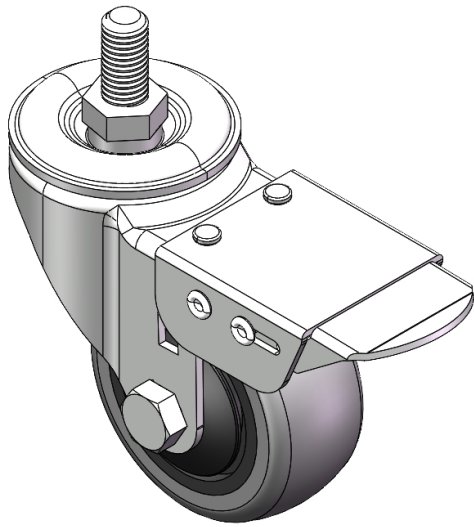
EAN

YJ-11390300176023

Castors with Total Brake Locking system. Threaded Fork - M12- P1.75 Extended control lever surface, Mounting Type - Threaded Stem High-quality Impact Resistance Polypropylene Wheel Center,High-Quality Thermoplastic Rubber (TPR) wheel tread Black-grey, Bearing - Ball Bearing.

Wheel tread: Thermoplastic rubber elastomer (TPR)
Wheel Center: Made of high-quality impact-resistant polypropylene

Drawings are for reference only and may differ from the product



Picture may differ from original product

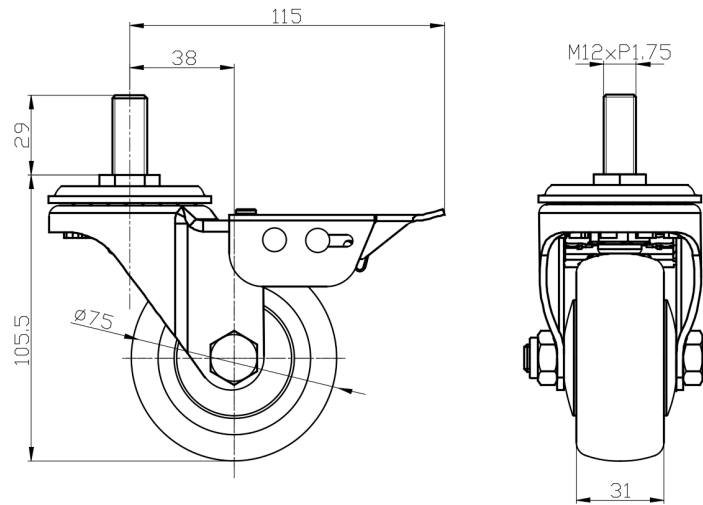
Technical Data

| | |
|------------------------------------------------------------------------|--------------------------------|
| <input checked="" type="radio"/> Metric <input type="radio"/> Imperial | |
| Wheel Diameter | 75mm |
| Wheel Width | 31mm |
| Wheel Bearing | Wheels With Ball Bearings |
| Threaded Stem | M12-P1.75 |
| Threaded Size | 29mm |
| Offset | 38mm |
| Swivel Interference | 230mm |
| Overall Height | 105.5mm |
| Swivel Radius | 115mm |
| Hardness Of Tread | 82±5° Shore A |
| Load Capacity (Dynamic) | 100kgs |
| Load Capacity (Static) | 150kgs |
| Temperature | -20°C to +60°C |
| Fork Type | Swivel Caster With Total Brake |
| Stainless | N/A |
| Electrical Conductivity | Y 导电值10^3~10^4 |
| Anti-Static | N/A |
| Weight | 0.68kgs |
| Standard | ISO22883 |

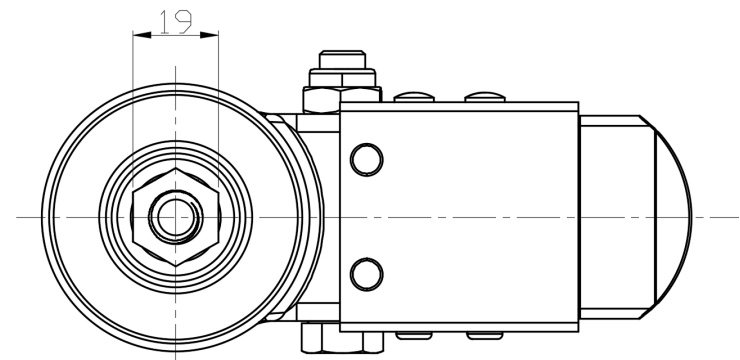
Advantages at a glance

| | |
|----------------------------|-----------|
| Rolling Resistance | ● ● ● ● ○ |
| Operating Noise | ● ● ● ● ○ |
| Floor Surface Preservation | ● ● ● ● ● |

Dimensions



Mounting



* For any deviation between metric and imperial spec, please refer to the metric spec.