

1139-1 Series — Medium Duty General Purposes  
Caster (American Style)



PPR (Pearlescent dark gray) Wheel Diameter × Wheel Width 75 x 31mm

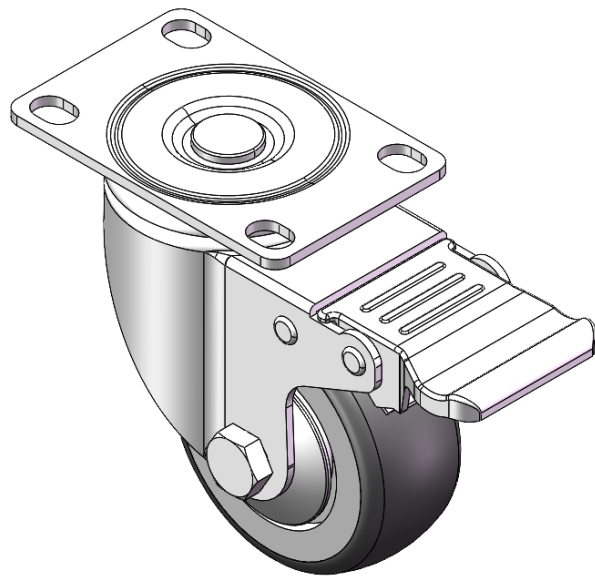
EAN

YJ-11390300264923

Casters with Total Brakes and With locking system. Top Plate with Riveted, Fork and 75 x 45 mm (3" x 1-3/4") Bolt Hole Spacing.  
Zine-Plated, Mounting Type - Top Plate.  
Polypropylene Wheel Center and Wheel Tread.  
Pearl-finish dark gray. Bearings with Ball Bearings.

Tread:Polypropylene  
Wheel Center:Polypropylene

Drawings are for reference only and may differ from the product



Picture may differ from original product

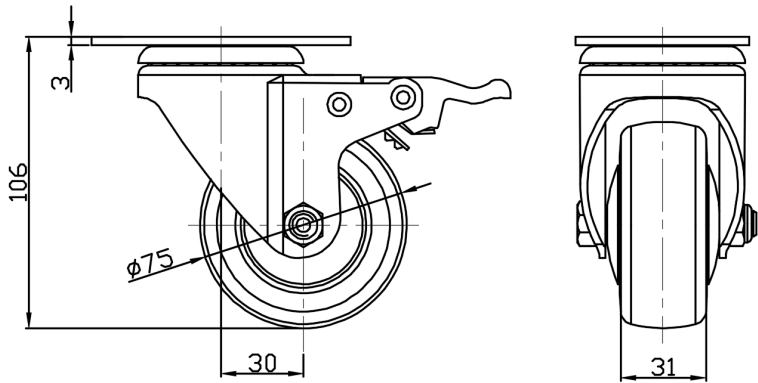
Technical Data

<input checked="" type="radio"/> Metric <input type="radio"/> Imperial	
Wheel Diameter	75mm
Wheel Width	31mm
Wheel Bearing	Wheels With Ball Bearings
Plate Size	93 x 61mm
Bolt Hole Spacing	73.5 x 45mm
Plate Hole	12.9 x 9.5mm
Offset	30mm
Swivel Interference	213mm
Overall Height	106mm
Swivel Radius	106.5mm
Hardness Of Tread	82±5° Shore A
Load Capacity (Dynamic)	90kgs
Load Capacity (Static)	135kgs
Temperature	-20°C to +60°C
Fork Type	Swivel Caster With Total Brake
Stainless	N/A
Electrical Conductivity	N/A
Anti-Static	N/A
Weight	0.68kgs
Standard	ISO22883

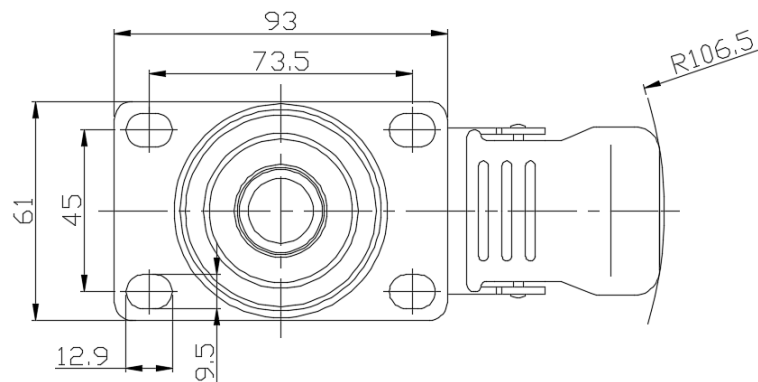
Advantages at a glance

Rolling Resistance	● ● ● ● ○
Operating Noise	● ● ● ● ○
Floor Surface Preservation	● ● ● ● ●

Dimensions



Mounting



\* For any deviation between metric and imperial spec, please refer to the metric spec.