

1139-1 Series — Medium Duty General Purposes
Caster (American Style)



PPR (Pearlescent dark gray) Wheel Diameter × Wheel Width 75 x 31mm

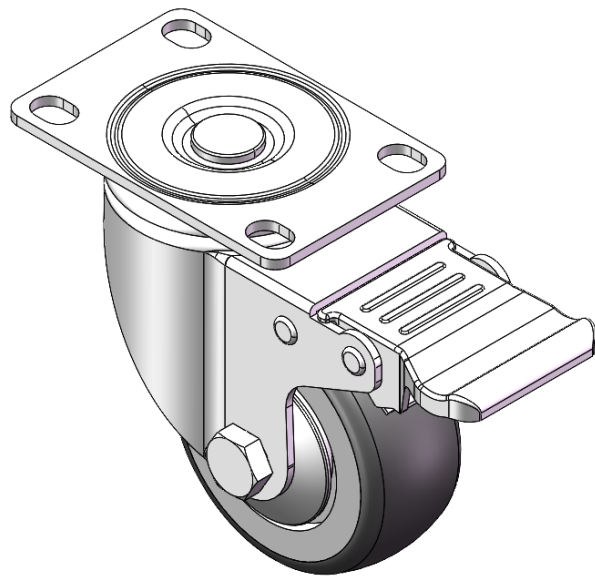
EAN

YJ-11390300264923

Casters with Total Brakes and With locking system. Top Plate with Riveted, Fork and 75 x 45 mm (3" x 1-3/4") Bolt Hole Spacing.
Zine-Plated, Mounting Type - Top Plate.
Polypropylene Wheel Center and Wheel Tread.
Pearl-finish dark gray. Bearings with Ball Bearings.

Tread:Polypropylene
Wheel Center:Polypropylene

Drawings are for reference only and may differ from the product



Picture may differ from original product

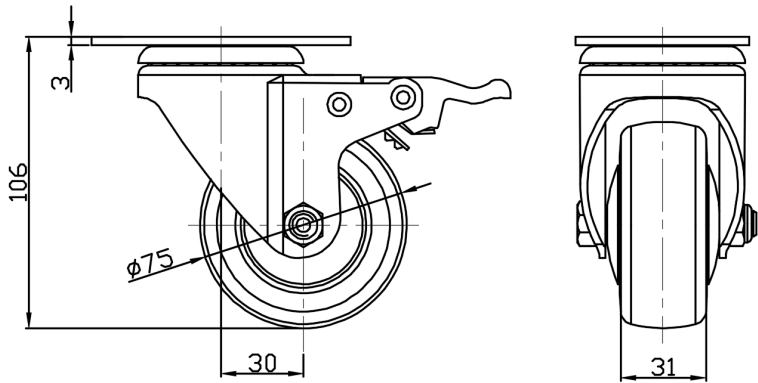
Technical Data

● Imperial ○ Metric	
Wheel Diameter	3 "
Wheel Width	1-1/4 "
Wheel Bearing	Wheels With Ball Bearings
Plate Size	3-11/16 " x 2-7/16 "
Bolt Hole Spacing	2-15/16 " x 1-13/16 "
Plate Hole	9/16 " x 3/8 "
Offset	1-3/16 "
Swivel Interference	8-1/2 "
Overall Height	4-1/4 "
Swivel Radius	4-1/4 "
Hardness Of Tread	82±5° Shore A
Load Capacity (Dynamic)	198lbs
Load Capacity (Static)	298lbs
Temperature	-4°F to +140°F
Fork Type	Swivel Caster With Total Brake
Stainless	N/A
Electrical Conductivity	N/A
Anti-Static	N/A
Weight	1.5lbs
Standard	ISO22883

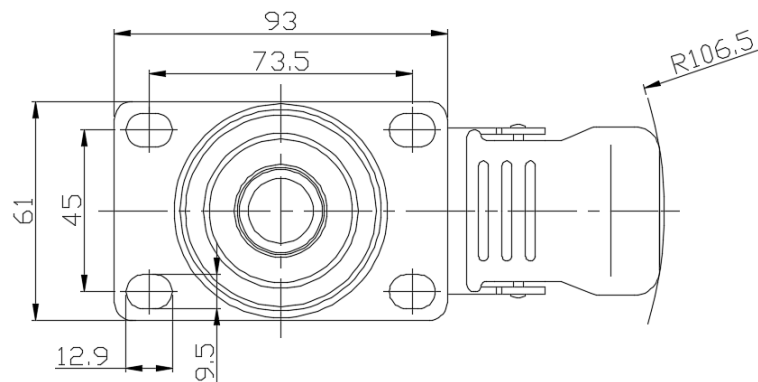
Advantages at a glance

Rolling Resistance	● ● ● ● ○
Operating Noise	● ● ● ● ○
Floor Surface Preservation	● ● ● ● ●

Dimensions



Mounting



* For any deviation between metric and imperial spec, please refer to the metric spec.