

Product Data Sheet

1139 Medium Duty General Purposes Caster Series

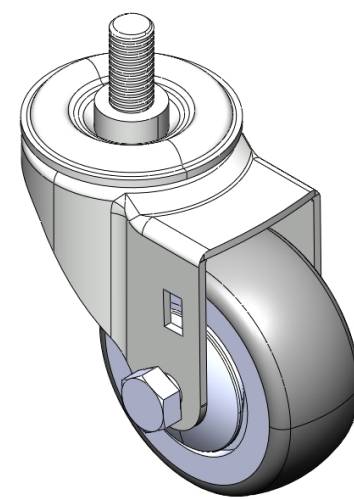


PPR (Pearlescent dark gra) Wheel Diameter × Wheel Width 75 x 31mm

EAN

YJ-11390300265054

Swivel Caster, thread-Riveted Stamping Fork—M12-P1.75 Extended control lever surface, Mounting Type - Threaded Stem High-quality Impact Resistance Polypropylene Wheel Center, High-Quality Thermoplastic Rubber (TPR) Wheel Tread Dark gray, Bearing—Ball Bearing.



Wheel tread: Thermoplastic rubber elastomer (TPR)

Wheel Center: Made of high-quality impact-resistant polypropylene

Drawings are for reference only and may differ from the product.

Picture may differ from original product

Technical Data

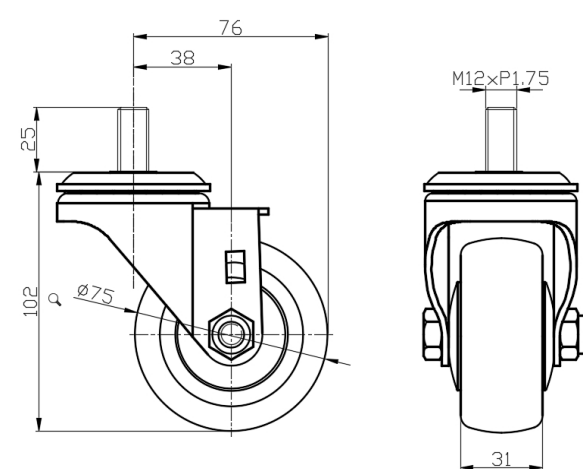
☒ Metric ☐ Imperial

Wheel Diameter	75mm
Wheel Width	31mm
Wheel Bearing	Wheels With Ball Bearings
Threaded Stem	M12-P1.75
Threaded Size	25mm
Offset	38mm
Swivel Interference	152mm
Overall Height	102mm
Swivel Radius	76mm
Hardness Of Tread	82±5° Shore A
Load Capacity (Dynamic)	90kgs
Load Capacity (Static)	135kgs
Temperature	-20°C to +60°C
Fork Type	Swivel Caster
Stainless	N/A
Electrical Conductivity	N/A
Anti-Static	N/A
Weight	0.54kgs
Standard	ISO22883

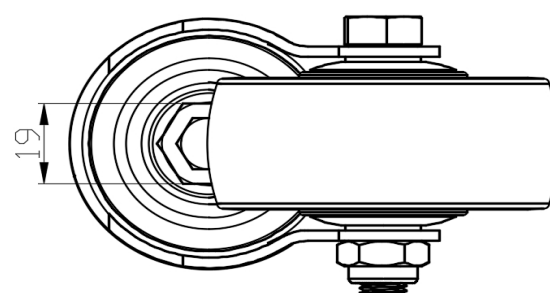
Advantages at a glance

Rolling Resistance	● ● ● ● ○
Operating Noise	● ● ● ● ○
Floor Surface Preservation	● ● ● ● ●

Dimensions



Mounting



* For any deviation between metric and imperial spec, please refer to the metric spec.