

1139 Medium Duty General Purposes Caster Series



WPP (white) Wheel Diameter × Wheel Width 75 x 31mm

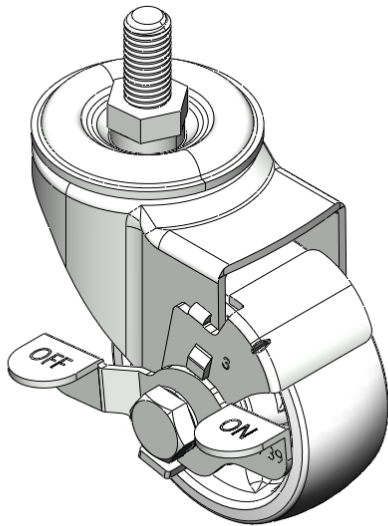
EAN

YJ-11390300296023

Castors with Side Brake and Locking system. Thread Riveting Stamping Tripod—M12-P1.75 Extended control lever surface, Threaded Stem installation device Polypropylene Wheel Center, Wheel Tread White, Bearing - Ball Bearings.

Wheel Tread: PP polypropylene  
Wheel Center: PP polypropylene

Drawings are for reference only and may differ from the product



Picture may differ from original product

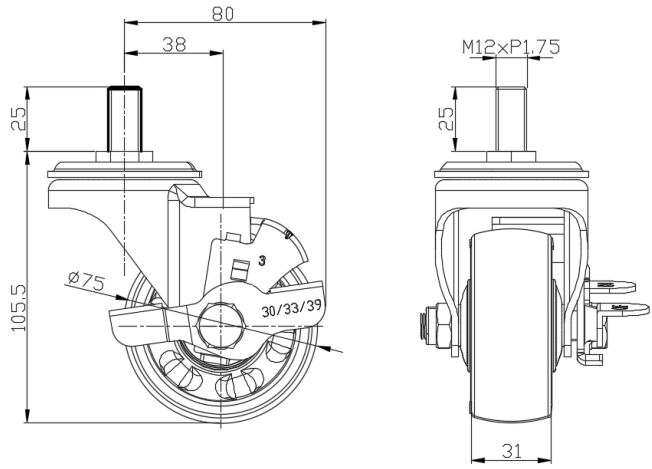
Technical Data

<input checked="" type="radio"/> Metric <input type="radio"/> Imperial	
Wheel Diameter	75mm
Wheel Width	31mm
Wheel Bearing	Wheels With Ball Bearings
Threaded Stem	M12-P1.75
Threaded Size	25mm
Offset	38mm
Swivel Interference	160mm
Overall Height	105.5mm
Swivel Radius	80mm
Hardness Of Tread	65±5° Shore D
Load Capacity (Dynamic)	100kgs
Load Capacity (Static)	150kgs
Temperature	-10°C to +60°C
Fork Type	Swivel Caster With Side Brake
Stainless	N/A
Electrical Conductivity	N/A
Anti-Static	N/A
Weight	0.58kgs
Standard	ISO22883

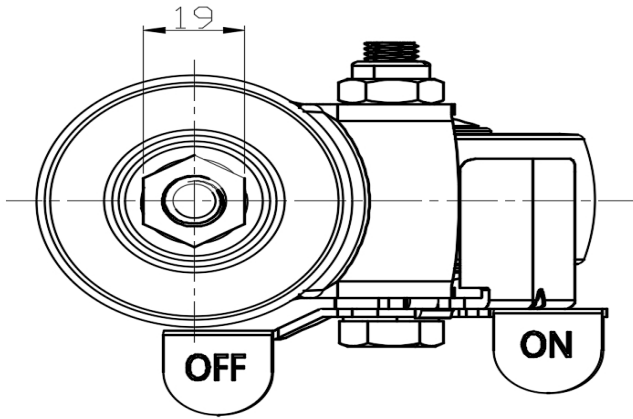
Advantages at a glance

Rolling Resistance	● ● ● ● ●
Operating Noise	● ● ● ○ ○
Floor Surface Preservation	● ● ● ○ ○

Dimensions



Mounting



\* For any deviation between metric and imperial spec, please refer to the metric spec.