

1139 Medium Duty General Purposes Caster Series

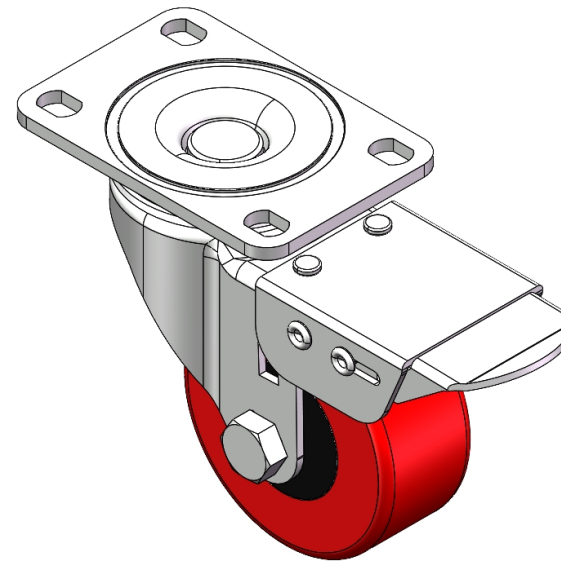


PU (red flat) Wheel Diameter x Wheel Width 75 x 32mm

EAN

YJ-11390300334023

Casters with Total Brakes and a With locking system. Top Plate with Riveted, Stamping Fork and 75 x 45 mm (3" x 1-3/4") Bolt Hole Spacing. Zine-Plated, Top Plate (4T) Mounting Type system. Cast Iron core with High Quality Polyurethane Wheel Tread. Red color, Bearing with Ball Bearings.



Picture may differ from original product

Wheel tread: Made of high-quality polyurethane
Wheel Center: cast iron core

Drawings are for reference only and may differ from the product

Technical Data

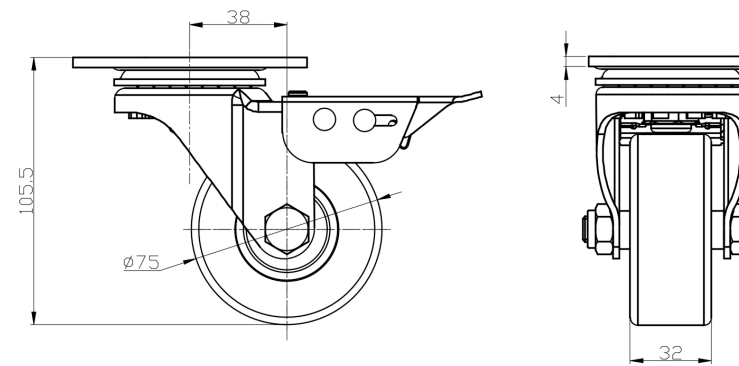
Metric Imperial

Wheel Diameter	150mm
Wheel Width	40mm
Wheel Bearing	Wheels With Ball Bearings
Plate Size	95 x 65mm
Bolt Hole Spacing	75 x 45mm
Plate Hole	12 x 9mm
Offset	38mm
Swivel Interference	230mm
Overall Height	105.5mm
Swivel Radius	115mm
Hardness Of Tread	93±5° Shore A
Load Capacity (Dynamic)	90kgs
Load Capacity (Static)	135kgs
Temperature	-20°C to +70°C
Fork Type	Swivel Caster With Total Brake
Stainless	N/A
Electrical Conductivity	N/A
Anti-Static	N/A
Weight	1.21kgs
Standard	ISO22883

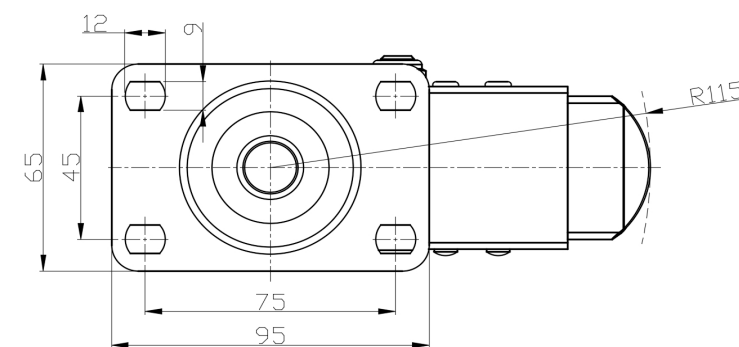
Advantages at a glance

Rolling Resistance	● ● ● ● ○ ○
Operating Noise	● ● ● ● ○
Floor Surface Preservation	● ● ● ● ○

Dimensions



Mounting



* For any deviation between metric and imperial spec, please refer to the metric spec.