



1139 Medium Duty General Purposes Caster Series

WCPD (Black) Wheel Diameter × Wheel Width 75 x 31mm

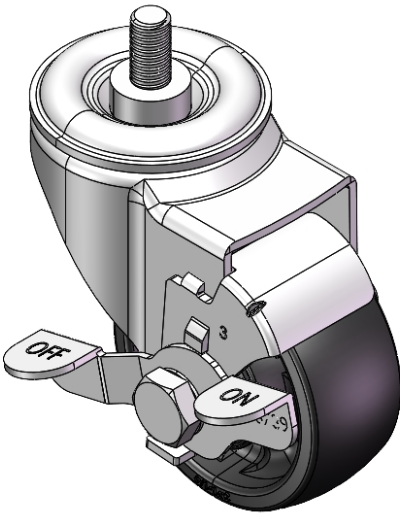
EAN

YJ-11390300446913

Equipped with side (wheel) brakes and a With locking system for the Casters. Stamping feet with Riveted teeth. —3/8"-16 Zine-Plated surface, Mounting Type - Threaded Stem. Polypropylene Wheel Center and rim. Black, Bearing—Ball Bearings.

Wheel surface: PP polypropylene  
Wheel Center: PP polypropylene

Drawings are for reference only and may differ from the product



Picture may differ from original product

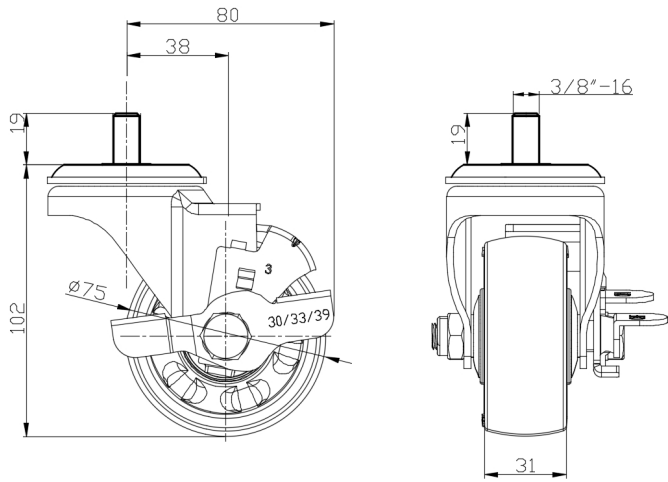
Technical Data

<input checked="" type="radio"/> Metric <input type="radio"/> Imperial	
Wheel Diameter	75mm
Wheel Width	31mm
Wheel Bearing	Wheels With Ball Bearings
Threaded Stem	3/8 " -16
Threaded Length	19mm
Offset	38mm
Swivel Interference	160mm
Overall Height	102mm
Swivel Radius	80mm
Hardness Of Tread	72±5° Shore D
Load Capacity (Dynamic)	100kgs
Load Capacity (Static)	150kgs
Temperature	-12°C to +60°C
Fork Type	Swivel Caster With Side Brake
Stainless	N/A
Electrical Conductivity	N/A
Anti-Static	N/A
Weight	0.59kgs
Standard	ISO22883

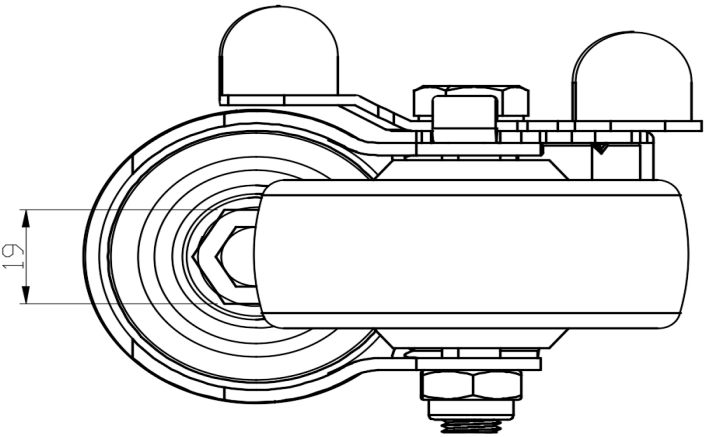
Advantages at a glance

Rolling Resistance	● ● ● ● ●
Operating Noise	● ● ● ○ ○
Floor Surface Preservation	● ● ● ○ ○

Dimensions



Mounting



\* For any deviation between metric and imperial spec, please refer to the metric spec.