

1139 Medium Duty General Purposes Caster Series



AQPU (brown round) Wheel Diameter × Wheel Width 75 x 30mm

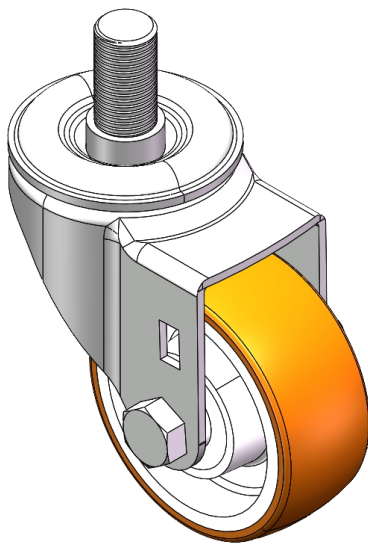
EAN

YJ-11390300605073

Swivel Caster, thread-Riveted Stamping Fork—M16-P2 Extended control lever surface, Mounting Type - Threaded Stem device Aluminum core, High Quality Polyurethane Wheel Tread Brown, Bearing—Ball Bearing.

Wheel tread: Made of high quality polyurethane  
Wheel Center: Aluminum core

Drawings are for reference only and may differ from the product



Picture may differ from original product

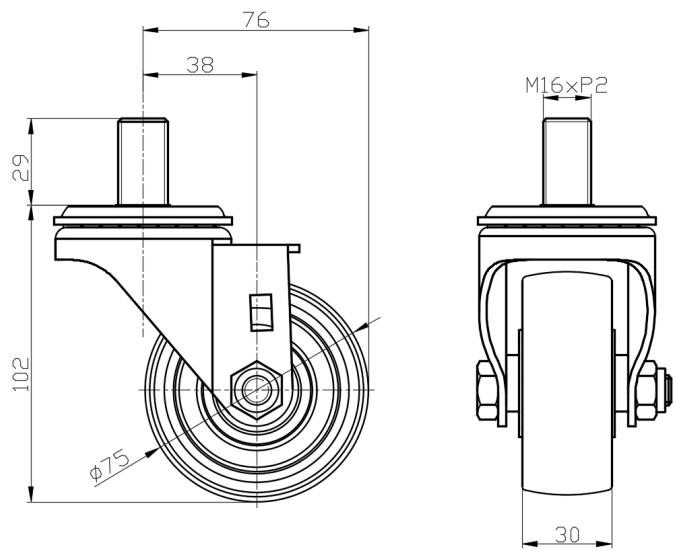
Technical Data

<input checked="" type="radio"/> Metric <input type="radio"/> Imperial	
Wheel Diameter	75mm
Wheel Width	30mm
Wheel Bearing	Wheels With Ball Bearings
Threaded Stem	M16-P2
Threaded Size	29mm
Offset	38mm
Swivel Interference	152mm
Overall Height	102mm
Swivel Radius	76mm
Hardness Of Tread	92±5° Shore A
Load Capacity (Dynamic)	160kgs
Load Capacity (Static)	240kgs
Temperature	-20°C to +70°C
Fork Type	Swivel Caster
Stainless	N/A
Electrical Conductivity	N/A
Anti-Static	N/A
Weight	0.67kgs
Standard	ISO22883

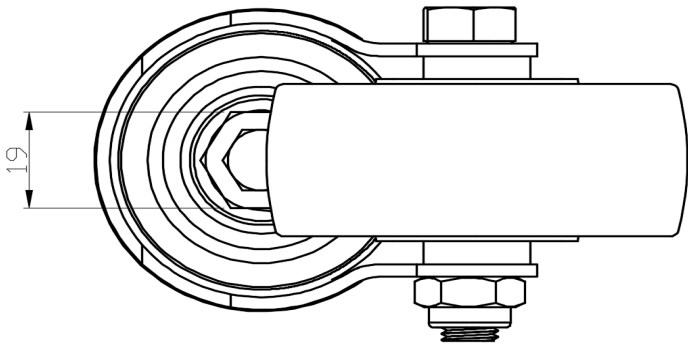
Advantages at a glance

Rolling Resistance	• • • • •
Operating Noise	• • • • •
Floor Surface Preservation	• • • • •

Dimensions



Mounting



\* For any deviation between metric and imperial spec, please refer to the metric spec.