

1139 Medium Duty General Purposes Caster Series



PPR E-Conductive (black-gray) Wheel Diameter × Wheel Width 100 x 31mm

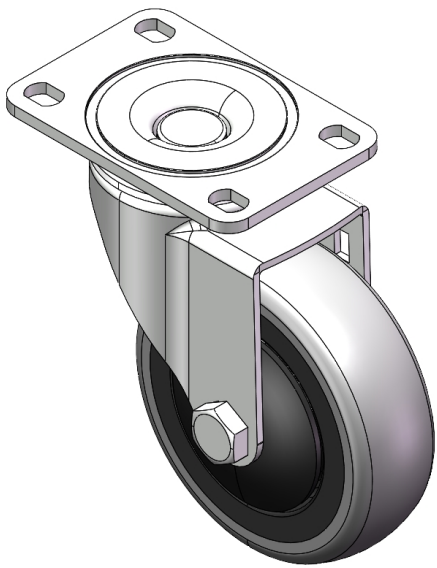
EAN

YJ-11390400172013

Swivel castor, Fork Riveted Stamping Fork - 75 x 45 mm (3" x 1-3/4") Bolt Hole Spacing
Surface Zine-Plated, Top Plate (4T) Mounting Type Impact resistant High-quality Impact
Resistance Polypropylene Wheel Center,High-Quality Thermoplastic Rubber (TPR) Wheel
Tread Black grey, Bearing - Ball Bearing.

Wheel tread: Thermoplastic rubber elastomer (TPR)
Wheel Center: Made of high-quality impact-resistant polypropylene

Drawings are for reference only and may differ from the product



Picture may differ from original product

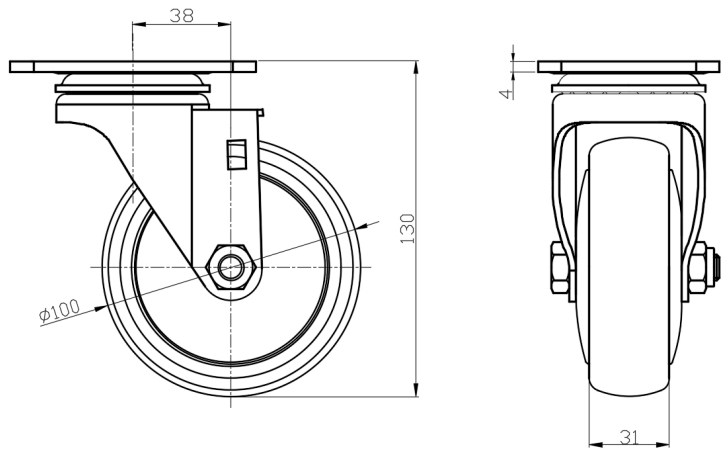
Technical Data

<input checked="" type="radio"/> Metric <input type="radio"/> Imperial	
Wheel Diameter	100mm
Wheel Width	31mm
Wheel Bearing	Wheels With Ball Bearings
Plate Size	95 x 65mm
Bolt Hole Spacing	75 x45mm
Plate Hole	12 x 9mm
Offset	38mm
Swivel Interference	176mm
Overall Height	130mm
Swivel Radius	88mm
Hardness Of Tread	82±5° Shore A
Load Capacity (Dynamic)	100kgs
Load Capacity (Static)	150kgs
Temperature	-20°C to +60°C
Fork Type	Swivel Caster
Stainless	N/A
Electrical Conductivity	Y 导电值10^3~10^4
Anti-Static	N/A
Weight	0.94kgs
Standard	ISO22883

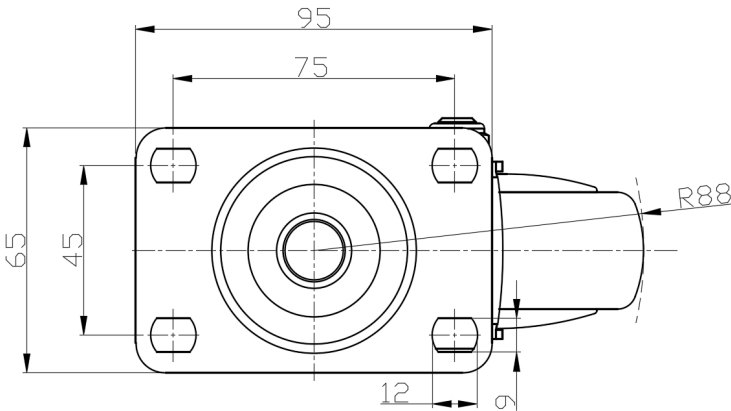
Advantages at a glance

Rolling Resistance	● ● ● ● ○
Operating Noise	● ● ● ● ○
Floor Surface Preservation	● ● ● ● ●

Dimensions



Mounting



* For any deviation between metric and imperial spec, please refer to the metric spec.