



1139 Medium Duty General Purposes Caster Series

PPR E-Conductive (black-gray) Wheel Diameter × Wheel Width 100 x 31mm

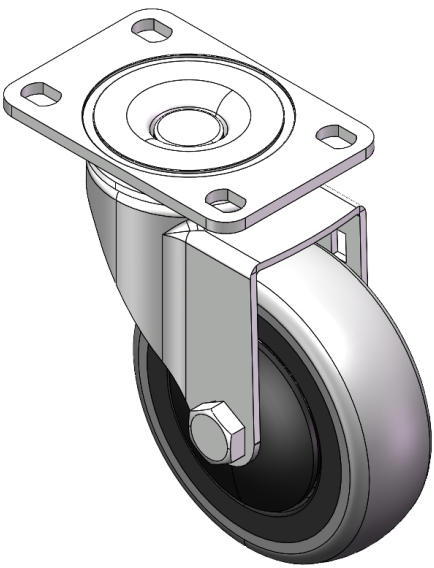
EAN

YJ-11390400172013

Swivel castor, Fork Riveted Stamping Fork - 75 x 45 mm (3" x 1-3/4") Bolt Hole Spacing
Surface Zine-Plated, Top Plate (4T) Mounting Type Impact resistant High-quality Impact
Resistance Polypropylene Wheel Center,High-Quality Thermoplastic Rubber (TPR) Wheel
Tread Black grey, Bearing - Ball Bearing.

Wheel tread: Thermoplastic rubber elastomer (TPR)
Wheel Center: Made of high-quality impact-resistant polypropylene

Drawings are for reference only and may differ from the product



Picture may differ from original product

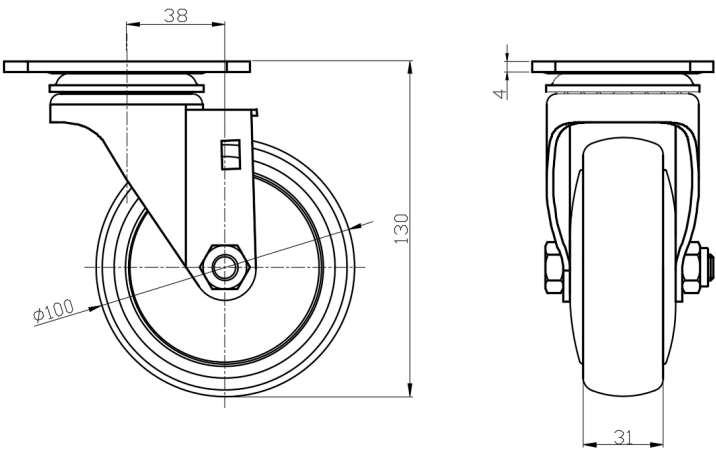
Technical Data

<input checked="" type="radio"/> Imperial <input type="radio"/> Metric	
Wheel Diameter	4 "
Wheel Width	1-1/4 "
Wheel Bearing	Wheels With Ball Bearings
Plate Size	3-13/16 " x 2-9/16 "
Bolt Hole Spacing	
Plate Hole	1/2 " x 23/64 "
Offset	1-1/2 "
Swivel Interference	7 "
Overall Height	5-3/16 "
Swivel Radius	3-1/2 "
Hardness Of Tread	82±5° Shore A
Load Capacity (Dynamic)	220lbs
Load Capacity (Static)	331lbs
Temperature	-4°F to +140°F
Fork Type	Swivel Caster
Stainless	N/A
Electrical Conductivity	Y 导电值10^3~10^4
Anti-Static	N/A
Weight	2.1lbs
Standard	ISO22883

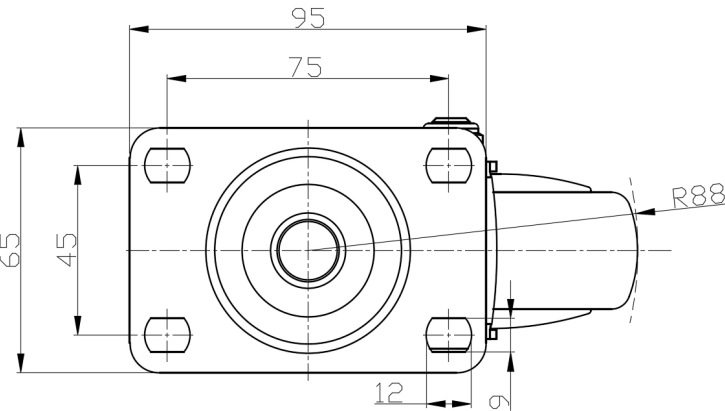
Advantages at a glance

Rolling Resistance	● ● ● ● ○
Operating Noise	● ● ● ● ○
Floor Surface Preservation	● ● ● ● ●

Dimensions



Mounting



* For any deviation between metric and imperial spec, please refer to the metric spec.