



1150 Medium Duty General Purposes Caster Series

MRC (Transparent) Wheel Diameter × Wheel Width 100 x 32mm

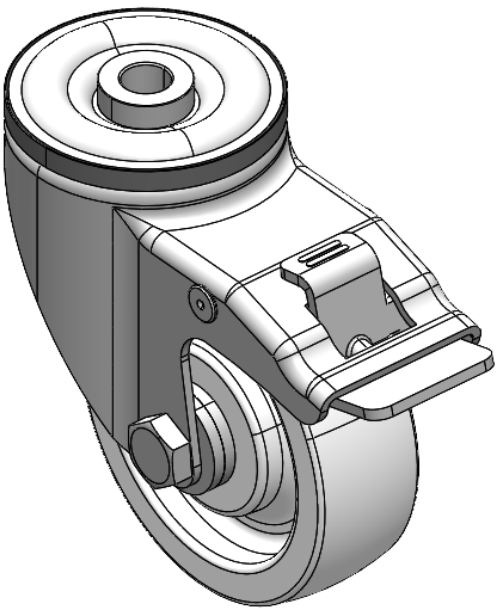
EAN

YJ-11500400074013

Equipped with double-brake With locking system Casters. Single Bolthole Riveted Stamping Fork—Ø12.5
Zine-Plated surface, Single Bolthole Mounting Type device
Reinforced Polypropylene and Wheel Tread
Transparent, Bearing—Ball Bearings.

Wheel surface: Thermoplastic (PA6)
Wheel Center: Thermoplastic (PA6)

Drawings are for reference only and may differ from the product



Picture may differ from original product

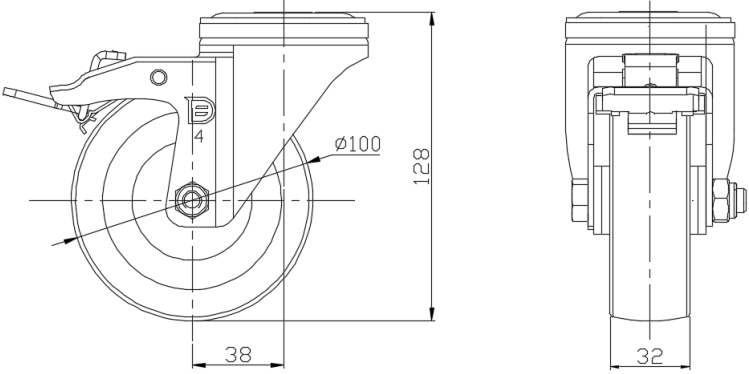
Technical Data

<input checked="" type="radio"/> Metric <input type="radio"/> Imperial	
Wheel Diameter	100mm
Wheel Width	32mm
Wheel Bearing	Wheels With Ball Bearings
Single Bolt HoleCentre Hole	12.5mm
Offset	38mm
Swivel Interference	224mm
Overall Height	128mm
Swivel Radius	112mm
Hardness Of Tread	75±5° Shore D
Load Capacity (Dynamic)	200kgs
Load Capacity (Static)	300kgs
Temperature	-20°C to +80°C
Fork Type	Swivel Caster With Total Brake
Stainless	N/A
Electrical Conductivity	N/A
Anti-Static	N/A
Weight	0.96kgs
Standard	ISO22883

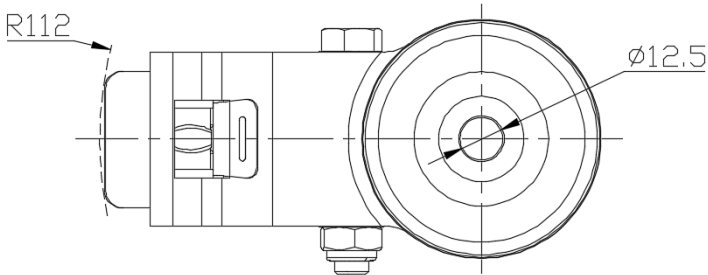
Advantages at a glance

Rolling Resistance	● ● ● ● ●
Operating Noise	● ● ○ ○ ○
Floor Surface Preservation	● ● ○ ○ ○

Dimensions



Mounting



* For any deviation between metric and imperial spec, please refer to the metric spec.