

1150 Medium Duty General Purposes Caster Series



All-Effect Elastic Wheel (Black-Black) Wheel Diameter × Wheel Width 100×34mm

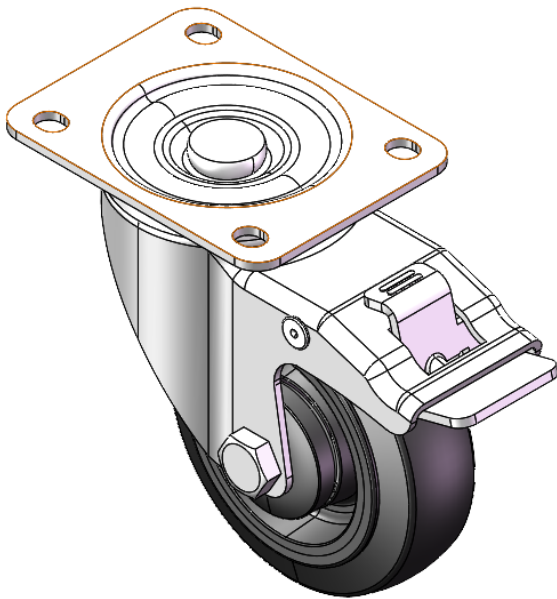
EAN

YJ-11500400454033

Equipped with double-brake locking Casters. Riveted and Stamping Top Plate legs – 44.5 x 30mm (1-3/4" x 1-1/8") Bolt Hole Spacings.
Zine-Plated surface, Top Plate type (3T) Mounting Type device.
High-Quality impact-resistant polypropylene Wheel Center, thermoplastic elastomer Wheel Tread.
Black, Bearing – Ball Bearings.

Wheel tread: Thermoplastic rubber elastomer (TPR)
Wheel Center: High-quality impact-resistant polypropylene

Drawings are for reference only and may differ from the product



Picture may differ from original product

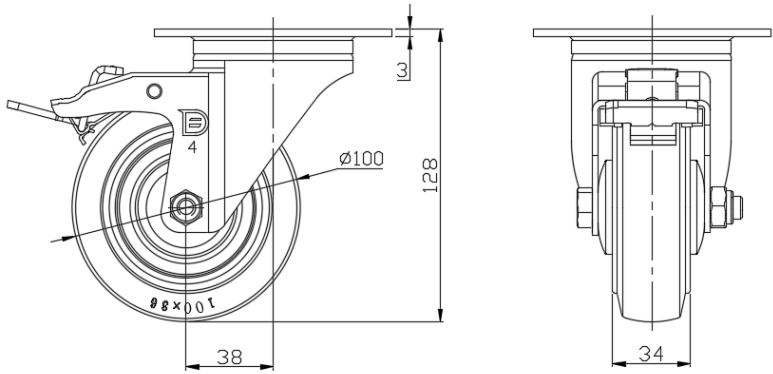
Technical Data

<input checked="" type="radio"/> Metric <input type="radio"/> Imperial	
Wheel Diameter	100mm
Wheel Width	34mm
Wheel Bearing	Wheels With Ball Bearings
Plate Size	104 x 80mm
Bolt Hole Spacing	80 x 60mm
Plate Hole	10.5 x 9mm
Offset	38mm
Swivel Interference	224mm
Overall Height	128mm
Swivel Radius	112mm
Hardness Of Tread	72±5° Shore A
Load Capacity (Dynamic)	150kgs
Load Capacity (Static)	225kgs
Temperature	-20°C to +60°C
Fork Type	Swivel Caster With Total Brake
Stainless	N/A
Electrical Conductivity	N/A
Anti-Static	N/A
Weight	0.95kgs
Standard	ISO22883

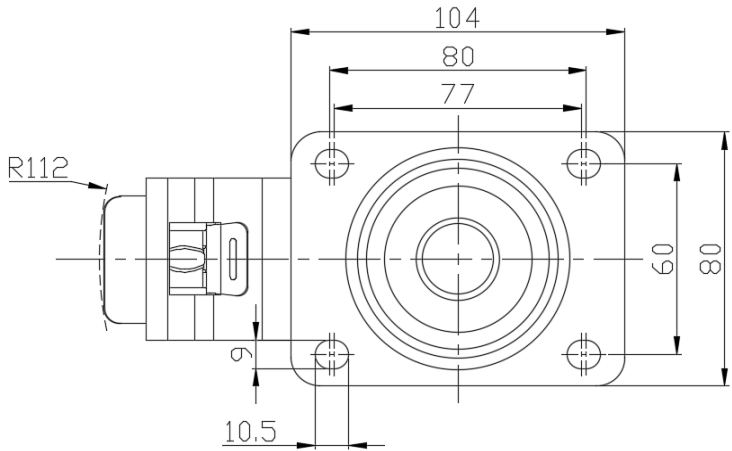
Advantages at a glance

Rolling Resistance	● ● ● ● ●
Operating Noise	● ● ● ● ●
Floor Surface Preservation	● ● ● ● ●

Dimensions



Mounting



* For any deviation between metric and imperial spec, please refer to the metric spec.