



1150 Medium Duty General Purposes Caster Series

AQPU (grey round) Wheel Diameter × Wheel Width 100 x 40mm

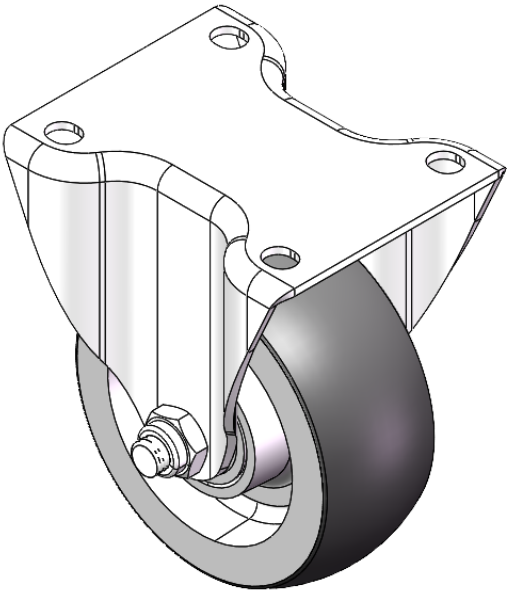
EAN

YJ-11500400601013

Rigid Casters, Stamping Fabricated Caster Fork — 44.5 x 30mm (1-3/4" x 1-1/8") Bolt Hole Spacings
Zine-Plated surface, Top Plate type (2.5T) Mounting Type device
Reinforced Polypropylene and Wheel Tread
Transparent, Bearing — Ball Bearings.

Wheel surface: Thermoplastic (PA6)
Wheel Center: Thermoplastic (PA6)

Drawings are for reference only and may differ from the product



Picture may differ from original product

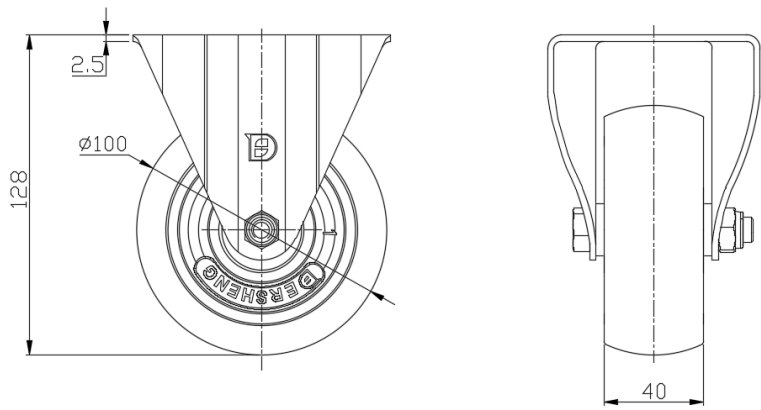
Technical Data

<input checked="" type="radio"/> Metric <input type="radio"/> Imperial	
Wheel Diameter	100mm
Wheel Width	40mm
Wheel Bearing	Wheels With Ball Bearings
Plate Size	103 x 85mm
Bolt Hole Spacing	80 x 60mm
Plate Hole	10.5 x 9mm
Overall Height	128mm
Hardness Of Tread	77±5° Shore A
Load Capacity (Dynamic)	350kgs
Load Capacity (Static)	525kgs
Temperature	-20°C to +70°C
Fork Type	Rigid Caster
Stainless	N/A
Electrical Conductivity	N/A
Anti-Static	N/A
Weight	0.9kgs
Standard	ISO22883

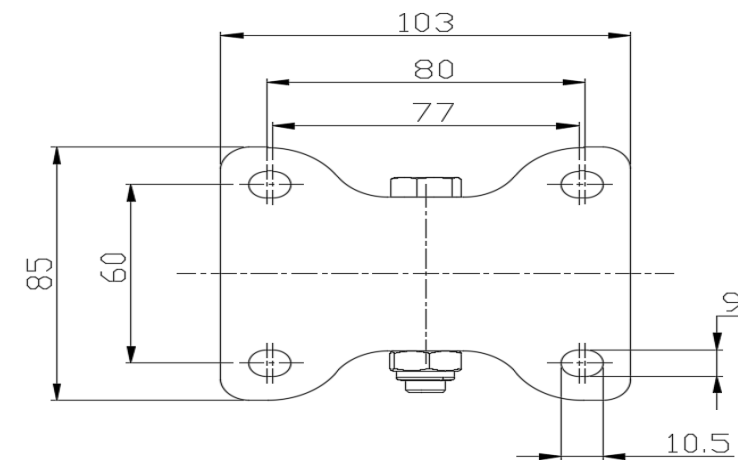
Advantages at a glance

Rolling Resistance	● ● ● ● ●
Operating Noise	● ● ● ● ●
Floor Surface Preservation	● ● ● ● ●

Dimensions



Mounting



* For any deviation between metric and imperial spec, please refer to the metric spec.