

1150 Medium Duty General Purposes Caster Series



AQPU (grey round) Wheel Diameter × Wheel Width 100 x 40mm

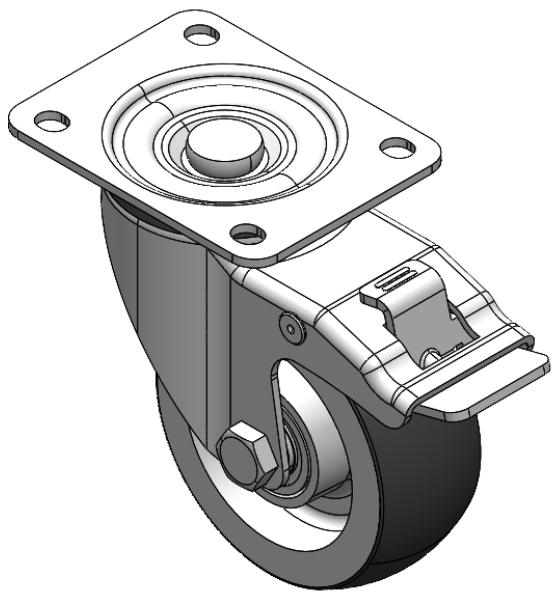
A

YJ-11500400604013

Equipped with double-brake, locking Casters. Riveted and Stamping Top Plate legs – 44.5 x 30mm (1-3/4" x 1-1/8") Bolt Hole Spacings.
Zine-Plated surface, Top Plate (3T) Mounting Type device.
Aluminum core, High Quality Polyurethane Wheel Tread.
Gray, Bearing – Ball Bearings.

Wheel Tread: Hhigh-Quality Polyurethane
Wheel Center: Aluminum core

Drawings are for reference only and may differ from the product



Picture may differ from original product

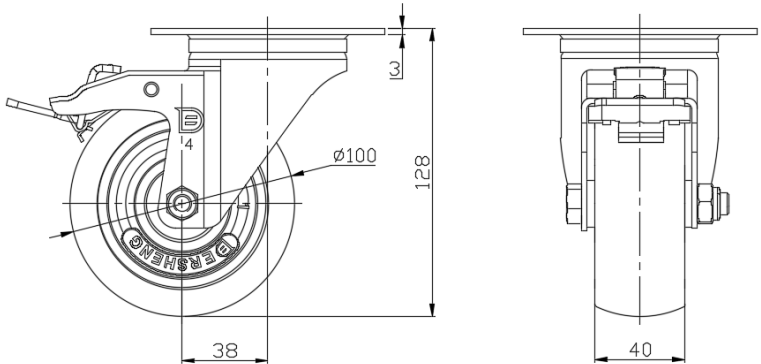
Technical Data

<input checked="" type="radio"/> Imperial <input type="radio"/> Metric	
Wheel Diameter	4 "
Wheel Width	1-5/8 "
Wheel Bearing	Wheels With Ball Bearings
Plate Size	4-1/8 " x 3-3/16 "
Bolt Hole Spacing	3-3/16 " x 2-7/16 "
Plate Hole	3/8 " x 23/64 "
Offset	1-5/8 "
Swivel Interference	7 "
Overall Height	5-1/16 "
Swivel Radius	3-1/2 "
Hardness Of Tread	92±5° Shore A
Load Capacity (Dynamic)	772lbs
Load Capacity (Static)	1157lbs
Temperature	-4°F to +158°F
Fork Type	Swivel Caster With Total Brake
Stainless	N/A
Electrical Conductivity	N/A
Anti-Static	N/A
Weight	2.7lbs
Standard	ISO22883

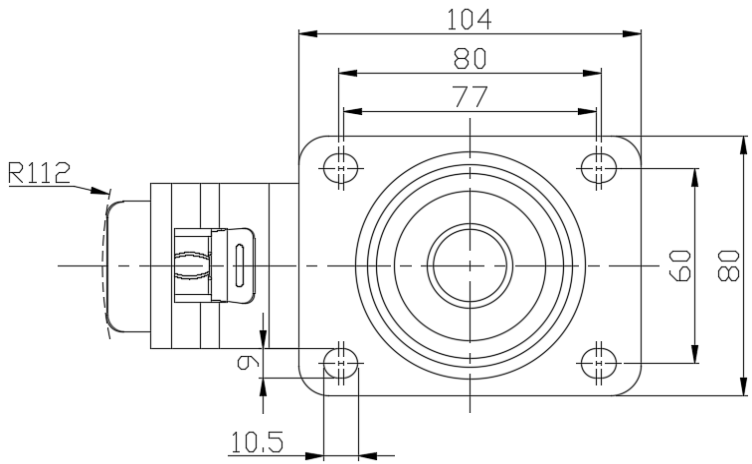
Advantages at a glance

Rolling Resistance	● ● ● ● ●
Operating Noise	● ● ● ● ●
Floor Surface Preservation	● ● ● ● ●

Dimensions



Mounting



* For any deviation between metric and imperial spec, please refer to the metric spec.