



1150 Medium Duty General Purposes Caster Series

MRC (Transparent) Wheel Diameter × Wheel Width 125 x 40mm

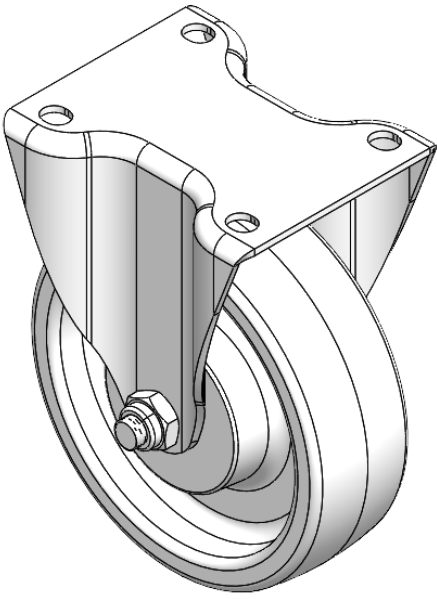
EAN

YJ-11500500071013

Rigid Casters, Stamping Fabricated Caster Fork — 44.5 x 30mm (1-3/4" x 1-1/8") Bolt Hole Spacings
Zine-Plated surface, Top Plate type (2.5T) Mounting Type device
Reinforced Polypropylene and Wheel Tread
Transparent, Bearing — Ball Bearings.

Wheel surface: Thermoplastic (PA6)
Wheel Center: Thermoplastic (PA6)

Drawings are for reference only and may differ from the product



Picture may differ from original product

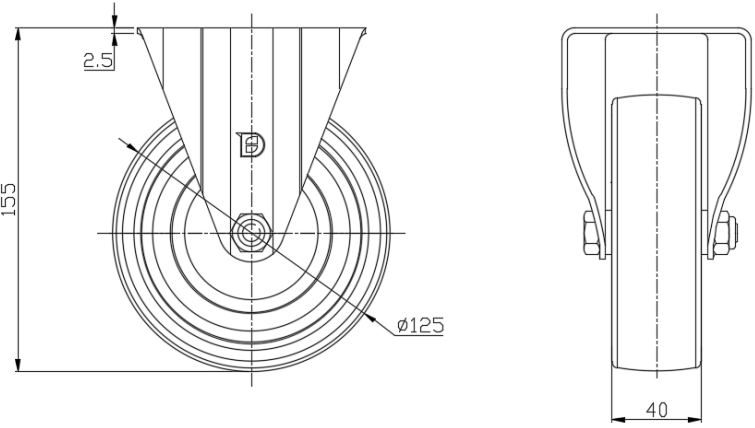
Technical Data

<input checked="" type="radio"/> Metric <input type="radio"/> Imperial	
Wheel Diameter	125mm
Wheel Width	40mm
Wheel Bearing	Wheels With Ball Bearings
Plate Size	103 x 85mm
Bolt Hole Spacing	80 x 60mm
Plate Hole	10.5 x 9mm
Overall Height	155mm
Hardness Of Tread	82±5° Shore D
Load Capacity (Dynamic)	250kgs
Load Capacity (Static)	375kgs
Temperature	-25°C to +80°C
Fork Type	Rigid Caster
Stainless	N/A
Electrical Conductivity	N/A
Anti-Static	N/A
Weight	0.94kgs
Standard	ISO22883

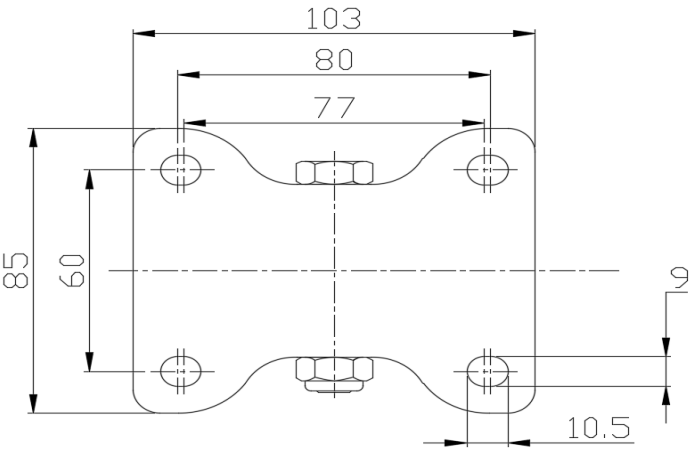
Advantages at a glance

Rolling Resistance	● ● ● ● ●
Operating Noise	● ● ○ ○ ○
Floor Surface Preservation	● ● ○ ○ ○

Dimensions



Mounting



* For any deviation between metric and imperial spec, please refer to the metric spec.