

1150 Medium Duty General Purposes Caster Series



MRC (Transparent) Wheel Diameter × Wheel Width 125 x 40mm

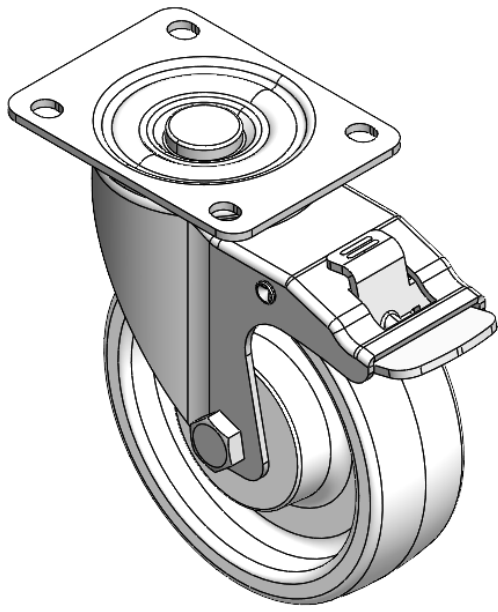
D

YJ-11500500074013

Equipped with double-brake locking Casters. Riveted and Stamping Top Plate legs – 44.5 x 30mm (1-3/4" x 1-1/8") Bolt Hole Spacings.
Zine-Plated surface, Top Plate type (3T) Mounting Type device.
Reinforced Polypropylene and Wheel Tread.
Transparent, Bearing – Ball Bearings.

Wheel surface: Thermoplastic (PA6)
Wheel Center: Thermoplastic (PA6)

Drawings are for reference only and may differ from the product



Picture may differ from original product

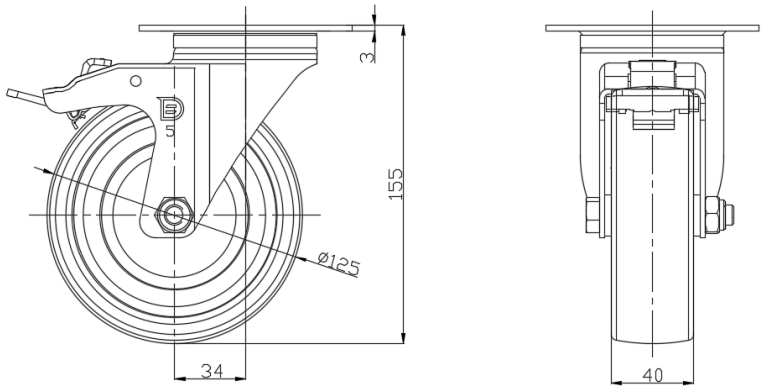
Technical Data

<input checked="" type="radio"/> Metric <input type="radio"/> Imperial	
Wheel Diameter	125mm
Wheel Width	40mm
Wheel Bearing	Wheels With Ball Bearings
Plate Size	104 x 80mm
Bolt Hole Spacing	80 x 60mm
Plate Hole	10.5 x 9mm
Offset	34mm
Swivel Interference	236mm
Overall Height	155mm
Swivel Radius	118mm
Hardness Of Tread	75±5° Shore D
Load Capacity (Dynamic)	250kgs
Load Capacity (Static)	375kgs
Temperature	-20°C to +80°C
Fork Type	Swivel Caster With Total Brake
Stainless	N/A
Electrical Conductivity	N/A
Anti-Static	N/A
Weight	1.28kgs
Standard	ISO22883

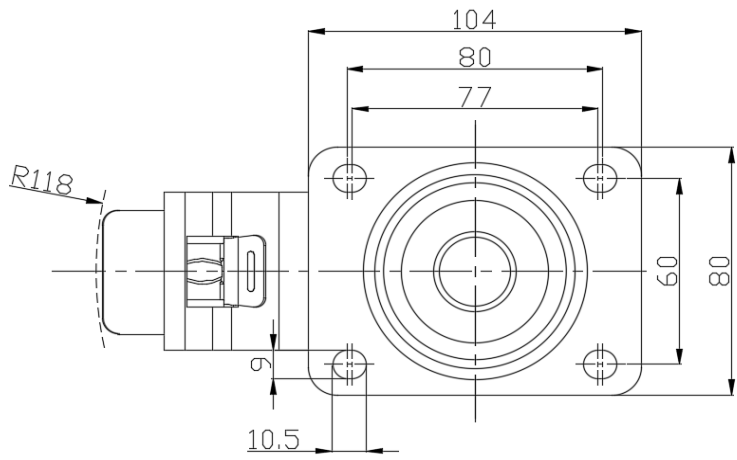
Advantages at a glance

Rolling Resistance	● ● ● ● ●
Operating Noise	● ● ○ ○ ○
Floor Surface Preservation	● ● ○ ○ ○

Dimensions



Mounting



* For any deviation between metric and imperial spec, please refer to the metric spec.