

1150 Medium Duty General Purposes Caster Series



All-purpose elastic wheel (black & blue) Wheel diameter × Wheel width 125×36 mm

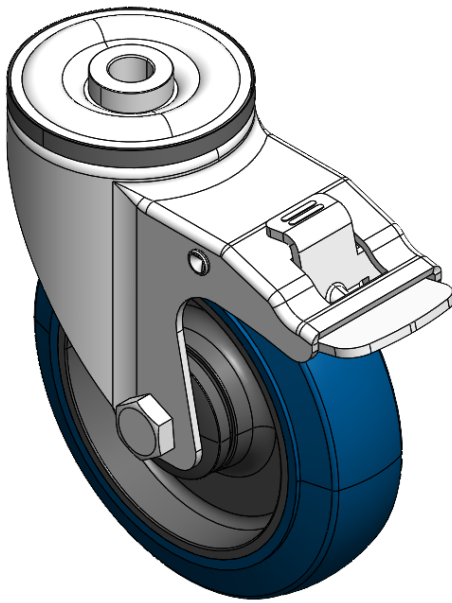
EAN

YJ-11500500458013

Equipped with double-brake With locking system Casters. Single Bolthole Riveted Stamping Fork—Ø12.5  
Zine-Plated surface, Single Bolthole Mounting Type device  
High-Quality impact-resistant polypropylene Wheel Center, thermoplastic elastomer Wheel Tread  
Black and blue, Bearing—Ball Bearings.

Wheel tread: Thermoplastic rubber elastomer (TPR)  
Wheel Center: High-quality impact-resistant polypropylene

Drawings are for reference only and may differ from the product



Picture may differ from original product

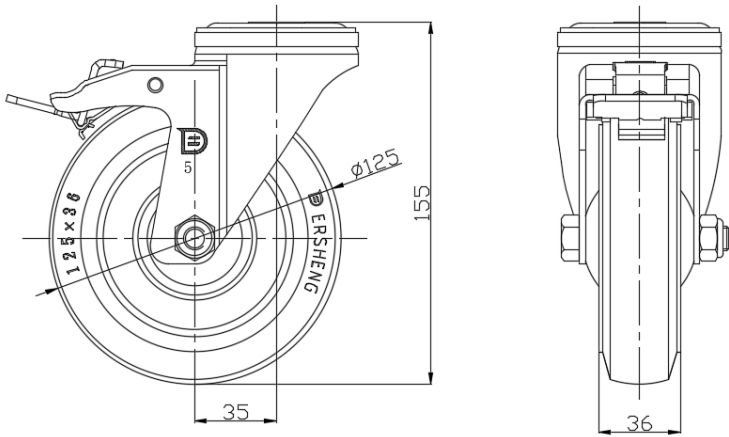
Technical Data

<input checked="" type="radio"/> Metric <input type="radio"/> Imperial	
Wheel Diameter	125mm
Wheel Width	36mm
Wheel Bearing	Wheels With Ball Bearings
Single Bolt HoleCentre Hole	12.5mm
Offset	35mm
Swivel Interference	234mm
Overall Height	155mm
Swivel Radius	117mm
Hardness Of Tread	72±5° Shore A
Load Capacity (Dynamic)	250kgs
Load Capacity (Static)	375kgs
Temperature	-20°C to +60°C
Fork Type	Swivel Caster With Total Brake
Stainless	N/A
Electrical Conductivity	N/A
Anti-Static	N/A
Weight	0.96kgs
Standard	ISO22883

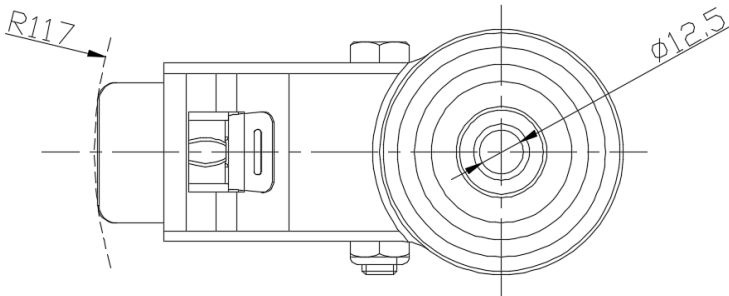
Advantages at a glance

Rolling Resistance	● ● ● ● ●
Operating Noise	● ● ● ● ●
Floor Surface Preservation	● ● ● ● ●

Dimensions



Mounting



\* For any deviation between metric and imperial spec, please refer to the metric spec.