

1150 Medium Duty General Purposes Caster Series



All-purpose elastic wheel (black & blue) Wheel diameter × Wheel width 125×36 mm

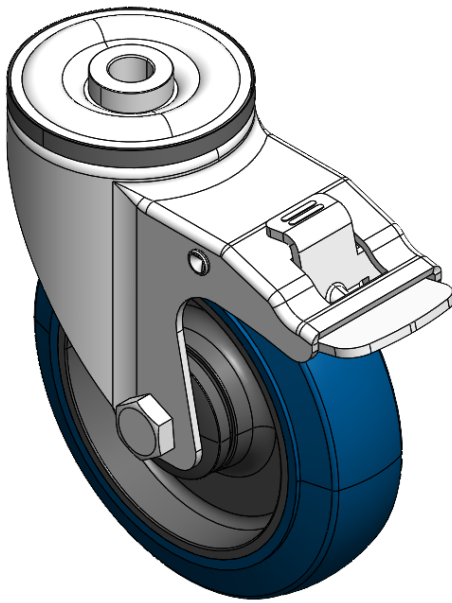
EAN

YJ-11500500458013

Equipped with double-brake With locking system Casters. Single Bolthole Riveted Stamping Fork—Ø12.5
Zine-Plated surface, Single Bolthole Mounting Type device
High-Quality impact-resistant polypropylene Wheel Center, thermoplastic elastomer Wheel Tread
Black and blue, Bearing—Ball Bearings.

Wheel tread: Thermoplastic rubber elastomer (TPR)
Wheel Center: High-quality impact-resistant polypropylene

Drawings are for reference only and may differ from the product



Picture may differ from original product

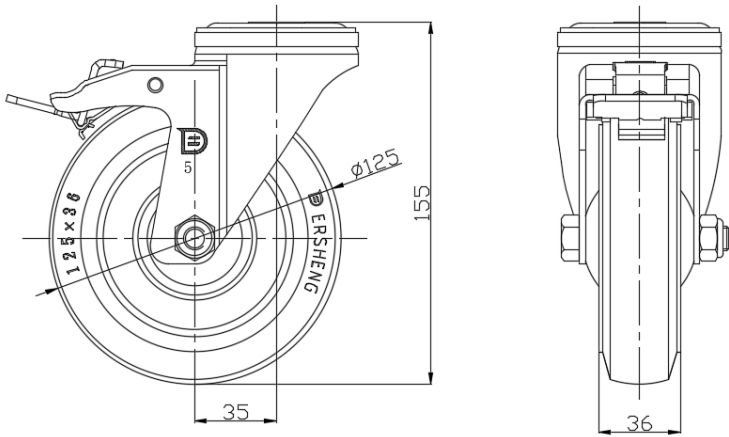
Technical Data

<input checked="" type="radio"/> Imperial <input type="radio"/> Metric	
Wheel Diameter	5 "
Wheel Width	1-7/16 "
Wheel Bearing	Wheels With Ball Bearings
Single Bolt HoleCentre Hole	1/2 "
Offset	1-3/8 "
Swivel Interference	9-5/16 "
Overall Height	6-1/8 "
Swivel Radius	4-5/8 "
Hardness Of Tread	72±5° Shore A
Load Capacity (Dynamic)	551lbs
Load Capacity (Static)	827lbs
Temperature	-4°F to +140°F
Fork Type	Swivel Caster With Total Brake
Stainless	N/A
Electrical Conductivity	N/A
Anti-Static	N/A
Weight	2.1lbs
Standard	ISO22883

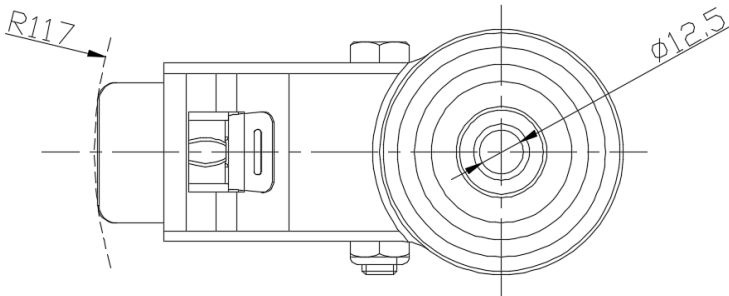
Advantages at a glance

Rolling Resistance	● ● ● ● ●
Operating Noise	● ● ● ● ●
Floor Surface Preservation	● ● ● ● ●

Dimensions



Mounting



* For any deviation between metric and imperial spec, please refer to the metric spec.