



1150 Medium Duty General Purposes Caster Series

AQPU (brown round) Wheel Diameter × Wheel Width 125 x 31mm

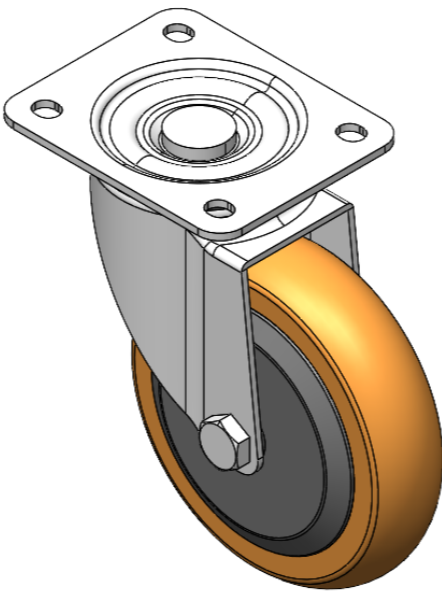
EAN

YJ-11500500602013

Swivel Casters, Riveted and Stamping Top Plate—44.5 x 30mm (1-3/4" x 1-1/8") Bolt Hole Spacings Zine-Plated surface, Top Plate type (3T) Mounting Type device Aluminum core, High Quality Polyurethane Wheel Tread Brown color, Bearing—Ball Bearings.

Wheel Tread: Hhigh-Quality Polyurethane
Wheel Center: Aluminum core

Drawings are for reference only and may differ from the product



Picture may differ from original product

Technical Data

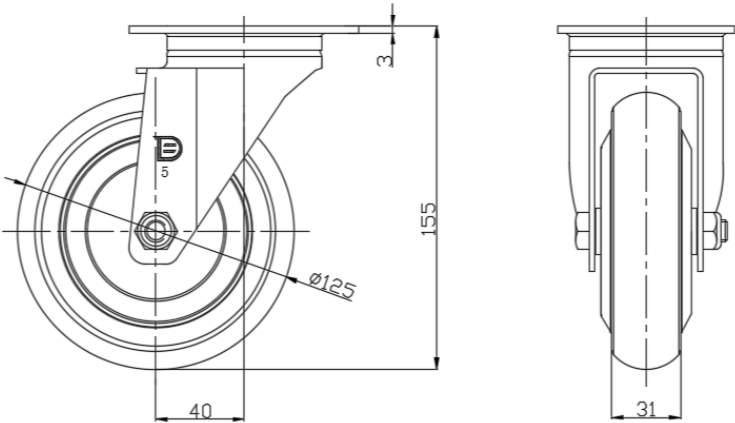
☒ Metric ☐ Imperial

Wheel Diameter	125mm
Wheel Width	31mm
Wheel Bearing	Wheels With Ball Bearings
Plate Size	104 x 80mm
Bolt Hole Spacing	80 x 60mm
Plate Hole	10.5 x 9mm
Offset	40mm
Swivel Interference	205mm
Overall Height	155mm
Swivel Radius	102.5mm
Hardness Of Tread	92±5° Shore A
Load Capacity (Dynamic)	250kgs
Load Capacity (Static)	375kgs
Temperature	-20°C to +70°C
Fork Type	Swivel Caster
Stainless	N/A
Electrical Conductivity	N/A
Anti-Static	N/A
Weight	1.1kgs
Standard	ISO22883

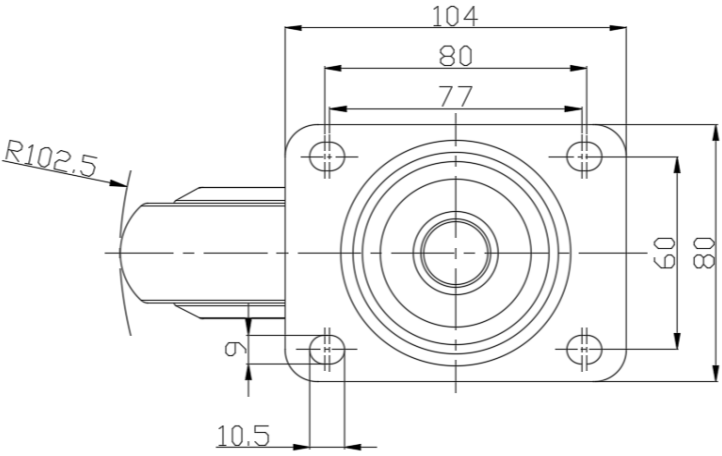
Advantages at a glance

Rolling Resistance	● ● ● ● ●
Operating Noise	● ● ● ● ●
Floor Surface Preservation	● ● ● ● ●

Dimensions



Mounting



* For any deviation between metric and imperial spec, please refer to the metric spec.