



1150 Medium Duty General Purposes Caster Series

AQPU Wheel (Brown Arc) Diameter × Width 125×40mm

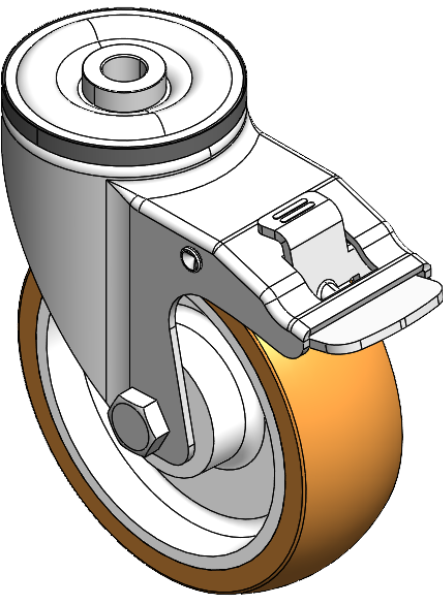
A

YJ-11500500608033

Equipped with double-brake locking Casters. Single Bolthole Riveted Stamping Fork—
Ø12.5
Zine-Plated surface, Single Bolthole Mounting Type device
Aluminum core, High Quality Polyurethane Wheel Tread
Brown, Bearing—Ball Bearings.

Wheel Tread: Hhigh-Quality Polyurethane
Wheel Center: Aluminum core

Drawings are for reference only and may differ from the product



Picture may differ from original product

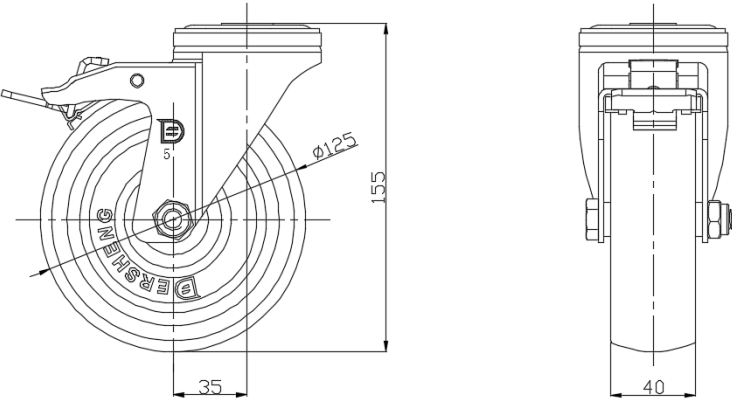
Technical Data

<input checked="" type="radio"/> Metric <input type="radio"/> Imperial	
Wheel Diameter	125mm
Wheel Width	40mm
Wheel Bearing	Wheels With Ball Bearings
Single Bolt HoleCentre Hole	12.5mm
Offset	35mm
Swivel Interference	205mm
Overall Height	155mm
Swivel Radius	102.5mm
Hardness Of Tread	92±5° Shore A
Load Capacity (Dynamic)	250kgs
Load Capacity (Static)	375kgs
Temperature	-20°C to +70°C
Fork Type	Swivel Caster With Total Brake
Stainless	N/A
Electrical Conductivity	N/A
Anti-Static	N/A
Weight	1.37kgs
Standard	ISO22883

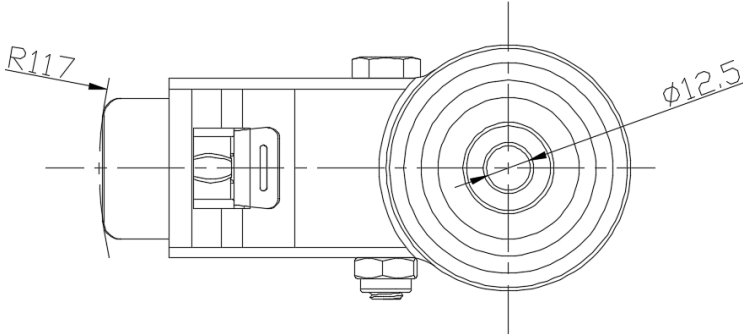
Advantages at a glance

Rolling Resistance	• • • • •
Operating Noise	• • • • •
Floor Surface Preservation	• • • • •

Dimensions



Mounting



* For any deviation between metric and imperial spec, please refer to the metric spec.