



1150 Medium Duty General Purposes Caster Series

AQPU Wheel (Brown Arc) Diameter × Width 125×40mm

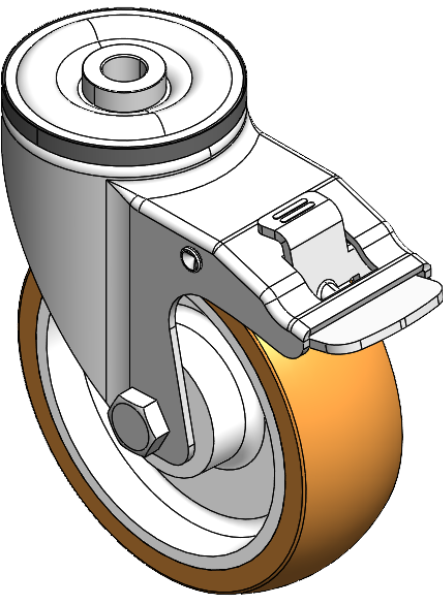
A

YJ-11500500608033

Equipped with double-brake locking Casters. Single Bolthole Riveted Stamping Fork—
Ø12.5
Zine-Plated surface, Single Bolthole Mounting Type device
Aluminum core, High Quality Polyurethane Wheel Tread
Brown, Bearing—Ball Bearings.

Wheel Tread: Hhigh-Quality Polyurethane
Wheel Center: Aluminum core

Drawings are for reference only and may differ from the product



Picture may differ from original product

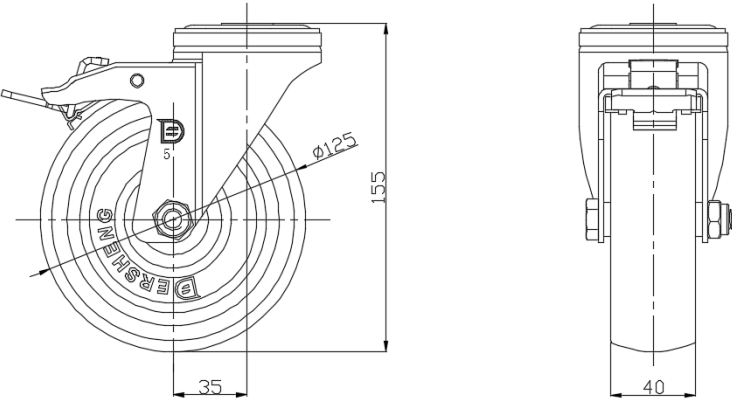
Technical Data

<input checked="" type="radio"/> Imperial <input type="radio"/> Metric	
Wheel Diameter	5 "
Wheel Width	1-5/8 "
Wheel Bearing	Wheels With Ball Bearings
Single Bolt HoleCentre Hole	1/2 "
Offset	1-3/8 "
Swivel Interference	8-1/8 "
Overall Height	6-1/8 "
Swivel Radius	4-1/16 "
Hardness Of Tread	92±5° Shore A
Load Capacity (Dynamic)	551lbs
Load Capacity (Static)	827lbs
Temperature	-4°F to +158°F
Fork Type	Swivel Caster With Total Brake
Stainless	N/A
Electrical Conductivity	N/A
Anti-Static	N/A
Weight	3.0lbs
Standard	ISO22883

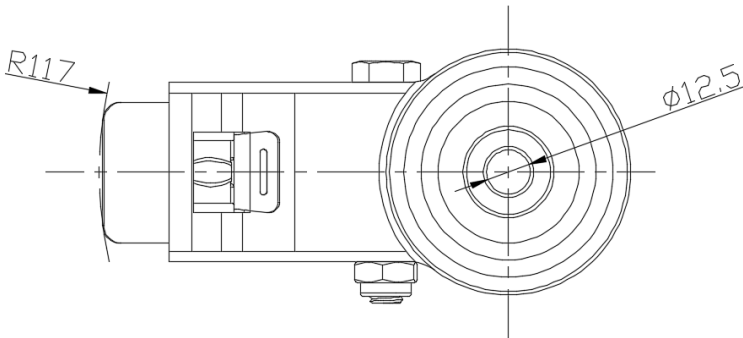
Advantages at a glance

Rolling Resistance	● ● ● ● ●
Operating Noise	● ● ● ● ●
Floor Surface Preservation	● ● ● ● ●

Dimensions



Mounting



* For any deviation between metric and imperial spec, please refer to the metric spec.