

1151 51 European Standard Base Plate Series

All-purpose elastic wheel (black & blue) Wheel diameter × Wheel width 100×34 mm

A

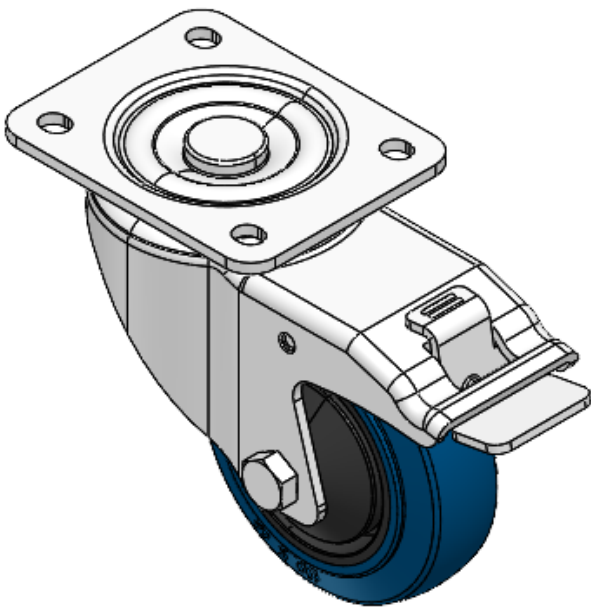
YJ-11510400454023

Equipped with double-brake, locking Casters. Riveted and Stamping Top Plate legs – 44.5 x 30mm (1-3/4" x 1-1/8") Bolt Hole Spacings.
Zine-Plated surface, Top Plate (4T) Mounting Type device.
High-Quality impact-resistant polypropylene Wheel Center, High-Quality Reinforced Polypropylene Rubber (TPR) Wheel Tread.
Black and blue, Bearing – Ball Bearings.

Wheel tread: Thermoplastic rubber elastomer (TPR)

Wheel Center: Made of high-quality impact-resistant polypropylene

Drawings are for reference only and may differ from the product



Picture may differ from original product

Technical Data

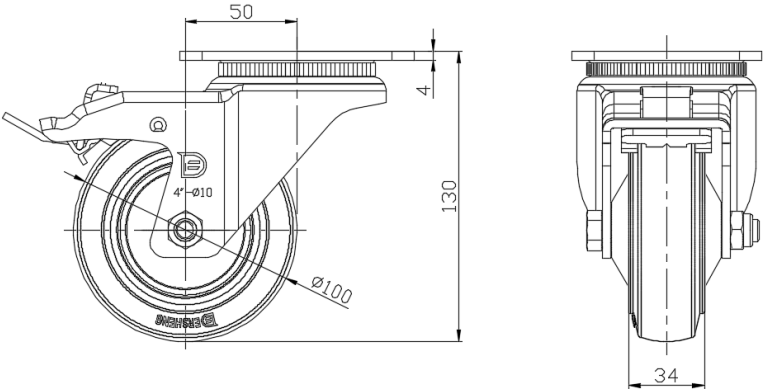
☒ Imperial ☐ Metric

Wheel Diameter	4 "
Wheel Width	1-3/8 "
Wheel Bearing	Wheels With Ball Bearings
Plate Size	4-3/16 " x 3-7/16 "
Bolt Hole Spacing	3-3/16 " x 2-7/16 "
Plate Hole	3/8 " x 23/64 "
Offset	2 "
Swivel Interference	8 "
Overall Height	5-3/16 "
Swivel Radius	5-5/16 "
Hardness Of Tread	72±5° Shore A
Load Capacity (Dynamic)	331lbs
Load Capacity (Static)	496lbs
Temperature	-4°F to +140°F
Fork Type	Swivel Caster With Total Brake
Stainless	N/A
Electrical Conductivity	N/A
Anti-Static	N/A
Weight	3.1lbs
Standard	ISO22883

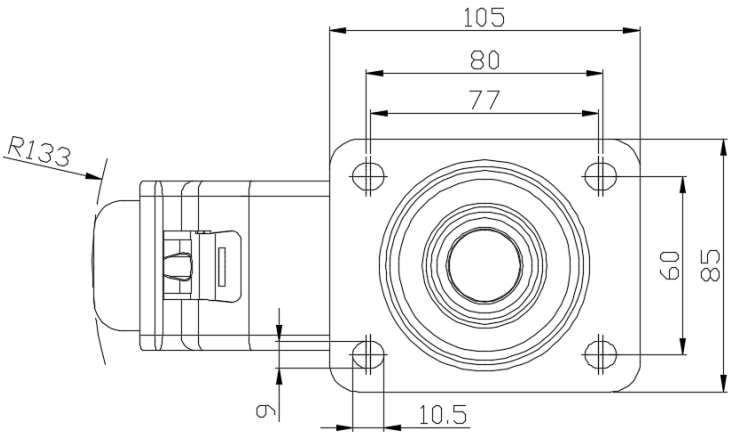
Advantages at a glance

Rolling Resistance	● ● ● ● ●
Operating Noise	● ● ● ● ●
Floor Surface Preservation	● ● ● ● ●

Dimensions



Mounting



* For any deviation between metric and imperial spec, please refer to the metric spec.