

1151D Heavy Duty 1.5" Wide General Purposes Caster Series



AQPU (grey round) Wheel Diameter × Wheel Width 100 x 40mm

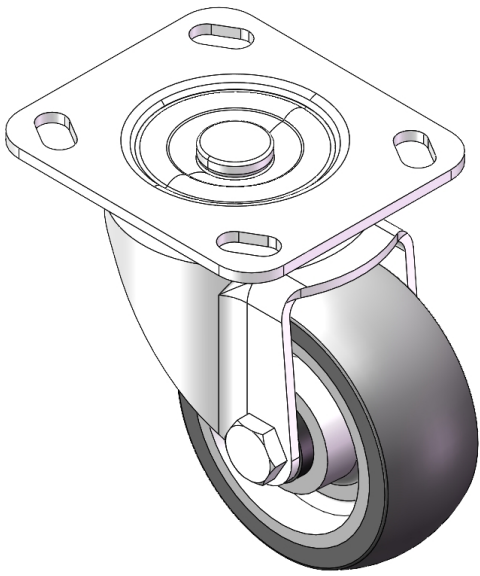
EAN

YJ-11510400602073

Swivel castor, Top Plate Riveted Stamping Fork - high-grade hole Surface Zine-Plated, Top Plate (4T) Mounting Type device Aluminum core, High Quality Polyurethane Wheel Tread Gray, Bearing - Ball Bearing.

Wheel tread: Made of high quality polyurethane
Wheel Center: Aluminum core

Drawings are for reference only and may differ from the product



Picture may differ from original product

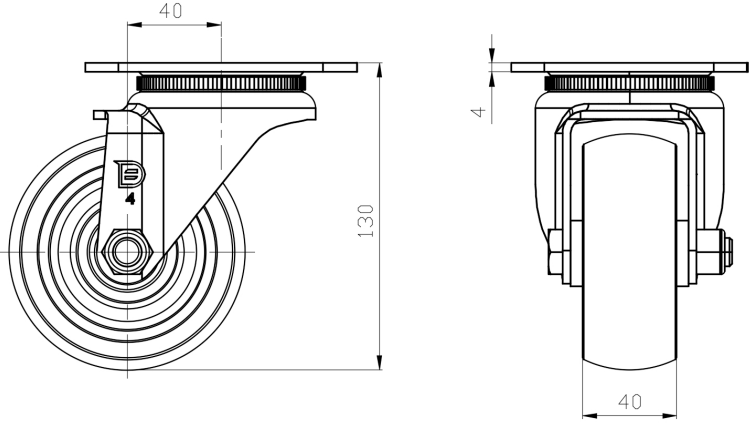
Technical Data

<input checked="" type="radio"/> Metric <input type="radio"/> Imperial	
Wheel Diameter	100mm
Wheel Width	40mm
Wheel Bearing	Wheels With Ball Bearings
Plate Size	115 x 100mm
Bolt Hole Spacing	85 x 70mm
Plate Hole	20 x 11mm
Offset	40mm
Swivel Interference	180mm
Overall Height	130mm
Swivel Radius	90mm
Hardness Of Tread	77±5° Shore A
Load Capacity (Dynamic)	200kgs
Load Capacity (Static)	300kgs
Temperature	-20°C to +70°C
Fork Type	Swivel Caster
Stainless	N/A
Electrical Conductivity	N/A
Anti-Static	N/A
Weight	1.32kgs
Standard	ISO22883

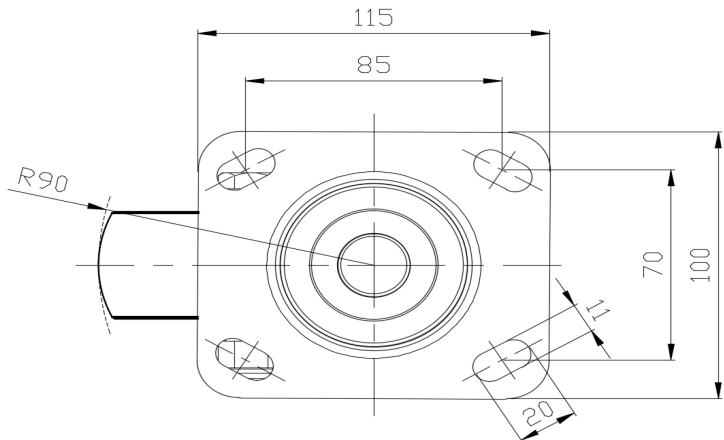
Advantages at a glance

Rolling Resistance	● ● ● ● ●
Operating Noise	● ● ● ● ●
Floor Surface Preservation	● ● ● ● ●

Dimensions



Mounting



* For any deviation between metric and imperial spec, please refer to the metric spec.