

Product Data Sheet

1165-6 AMR/AGV- 6 Pressed Steel Caster - Dual Wheel Series  
(Medium/Light Duty)



AQPU wheel (Brown arc) wheel diameter × wheel width 100 x 40mm

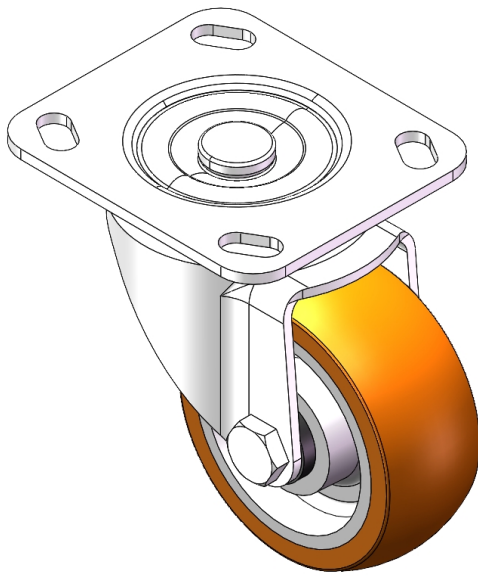
EAN

YJ-11510400602913

Swivel Caster, Top Plate Riveted and Stamping with 75 x 45 mm (3" x 1-3/4") Bolt Hole Spacing  
Zine-Plated, Top Plate (4T) Mounting Type system  
Aluminum core, High Quality Polyurethane Wheel Tread  
Brown, Bearing—Ball Bearings.

Wheel tread: Made of high-quality polyurethane  
Wheel Center: aluminum core

Drawings are for reference only and may differ from the product



Picture may differ from original product

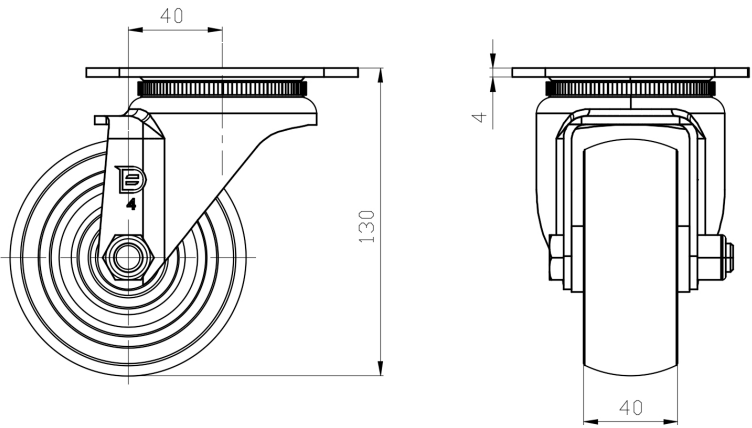
Technical Data

<input checked="" type="radio"/> Metric <input type="radio"/> Imperial	
Wheel Diameter	100mm
Wheel Width	40mm
Wheel Bearing	Wheels With Ball Bearings
Plate Size	115 x 100mm
Bolt Hole Spacing	85 x 70mm
Plate Hole	20 x 11mm
Offset	40mm
Swivel Interference	180mm
Overall Height	130mm
Swivel Radius	90mm
Hardness Of Tread	92±5° Shore A
Load Capacity (Dynamic)	200kgs
Load Capacity (Static)	300kgs
Temperature	-20°C to +70°C
Fork Type	Swivel Caster
Stainless	N/A
Electrical Conductivity	N/A
Anti-Static	N/A
Weight	1.32kgs
Standard	ISO22883

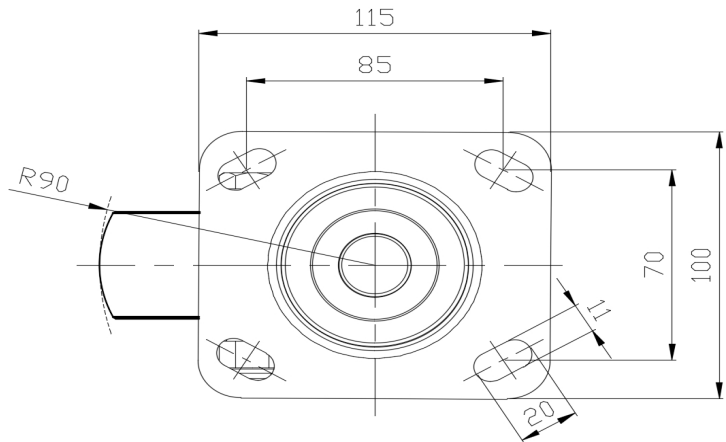
Advantages at a glance

Rolling Resistance	● ● ● ● ●
Operating Noise	● ● ● ● ●
Floor Surface Preservation	● ● ● ● ●

Dimensions



Mounting



\* For any deviation between metric and imperial spec, please refer to the metric spec.