

Product Data Sheet

1165-6 AMR/AGV- 6 Pressed Steel Caster - Dual Wheel Series (Medium/Light Duty)



AQPU wheel (Brown arc) wheel diameter × wheel width 100 x 40mm

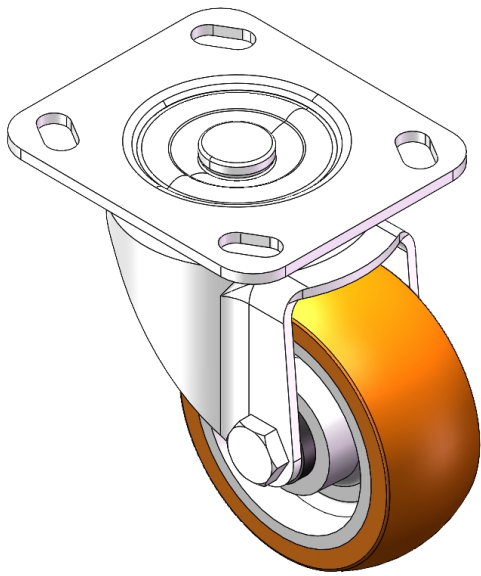
EAN

YJ-11510400602913

Swivel Caster, Top Plate Riveted and Stamping with 75 x 45 mm (3" x 1-3/4") Bolt Hole Spacing  
Zine-Plated, Top Plate (4T) Mounting Type system  
Aluminum core, High Quality Polyurethane Wheel Tread  
Brown, Bearing—Ball Bearings.

Wheel tread: Made of high-quality polyurethane  
Wheel Center: aluminum core

Drawings are for reference only and may differ from the product



Picture may differ from original product

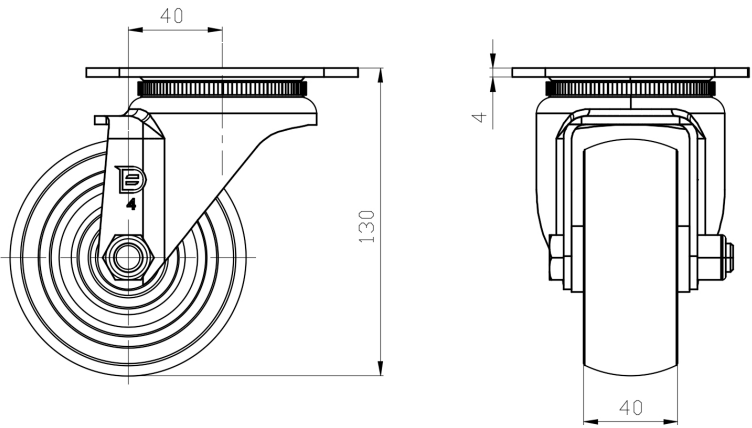
Technical Data

<input checked="" type="radio"/> Imperial <input type="radio"/> Metric	
Wheel Diameter	4 "
Wheel Width	1-5/8 "
Wheel Bearing	Wheels With Ball Bearings
Plate Size	4-9/16 " x 4 "
Bolt Hole Spacing	3-3/8 " x 2-3/4 "
Plate Hole	13/16 " x 3/8 "
Offset	1-5/8 "
Swivel Interference	7-1/8 "
Overall Height	5-3/16 "
Swivel Radius	3-9/16 "
Hardness Of Tread	92±5° Shore A
Load Capacity (Dynamic)	441lbs
Load Capacity (Static)	661lbs
Temperature	-4°F to +158°F
Fork Type	Swivel Caster
Stainless	N/A
Electrical Conductivity	N/A
Anti-Static	N/A
Weight	2.9lbs
Standard	ISO22883

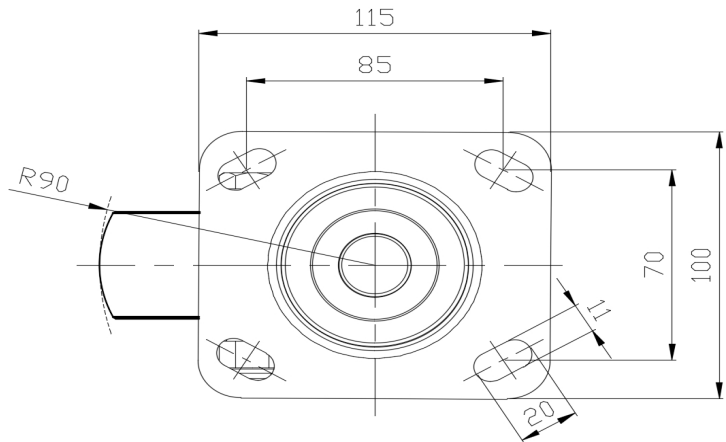
Advantages at a glance

Rolling Resistance	● ● ● ● ●
Operating Noise	● ● ● ● ●
Floor Surface Preservation	● ● ● ● ●

Dimensions



Mounting



\* For any deviation between metric and imperial spec, please refer to the metric spec.