



1151 51 European Standard Base Plate Series

MRC (Transparent) Wheel Diameter × Wheel Width 125 x 40mm

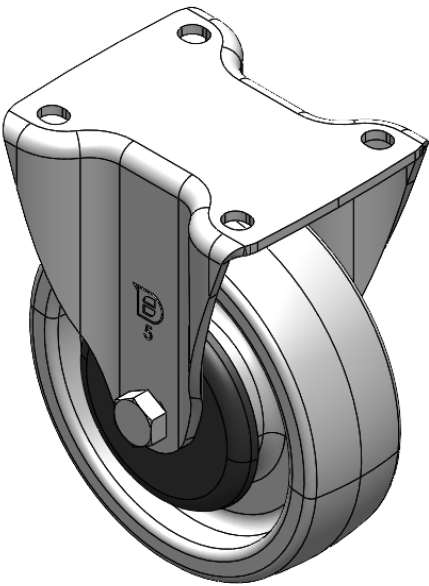
EAN

YJ-11510500071023

Rigid Casters, Stamping Fabricated Caster Fork — 44.5 x 30mm (1-3/4" x 1-1/8") Bolt Hole Spacings
Zine-Plated surface, Top Plate type (3.5T) Mounting Type device
Reinforced Polypropylene and Wheel Tread
Transparent, Bearing — Ball Bearings.

Wheel surface: Thermoplastic (PA6)
Wheel Center: Thermoplastic (PA6)

Drawings are for reference only and may differ from the product



Picture may differ from original product

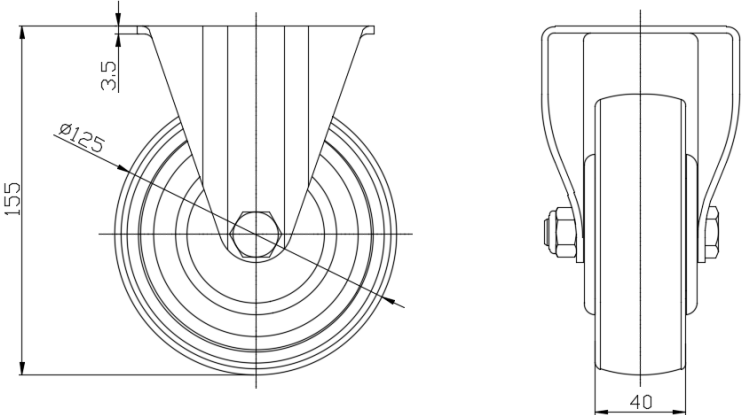
Technical Data

<input checked="" type="radio"/> Imperial <input type="radio"/> Metric	
Wheel Diameter	5 "
Wheel Width	1-5/8 "
Wheel Bearing	Wheels With Ball Bearings
Plate Size	4-3/16 " x 3-1/2 "
Bolt Hole Spacing	3-3/16 " x 2-7/16 "
Plate Hole	3/8 " x 23/64 "
Overall Height	6-1/8 "
Hardness Of Tread	75±5° Shore D
Load Capacity (Dynamic)	551lbs
Load Capacity (Static)	827lbs
Temperature	-4°F to +176°F
Fork Type	Rigid Caster
Stainless	N/A
Electrical Conductivity	N/A
Anti-Static	N/A
Weight	2.4lbs
Standard	ISO22883

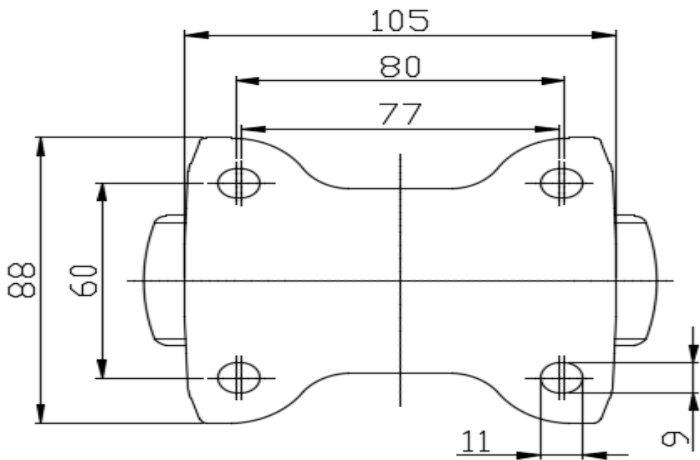
Advantages at a glance

Rolling Resistance	● ● ● ● ●
Operating Noise	● ● ○ ○ ○
Floor Surface Preservation	● ● ○ ○ ○

Dimensions



Mounting



* For any deviation between metric and imperial spec, please refer to the metric spec.