

1151 51 European Standard Base Plate Series

MRC (Transparent) Wheel Diameter × Wheel Width 125 x 40mm

EAN

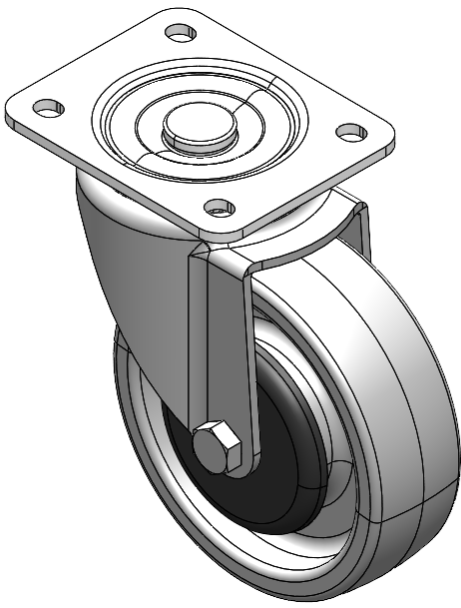
YJ-11510500072053

Swivel Casters, Riveted and Stamping Top Plate—44.5 x 30mm (1-3/4" x 1-1/8") Bolt Hole Spacings Zine-Plated surface, Top Plate type (4T) Mounting Type device Reinforced Polypropylene and Wheel Tread Transparent, Bearing—Ball Bearings.

Wheel surface: Thermoplastic (PA6)

Wheel Center: Thermoplastic (PA6)

Drawings are for reference only and may differ from the product



Picture may differ from original product

Technical Data

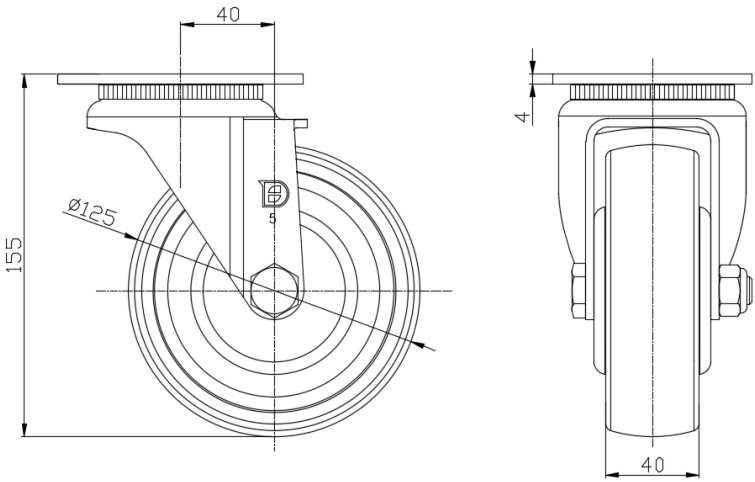
☒ Metric ☐ Imperial

Wheel Diameter	125mm
Wheel Width	40mm
Wheel Bearing	Wheels With Ball Bearings
Plate Size	105 x 85mm
Bolt Hole Spacing	80 x 60mm
Plate Hole	10.5 x 9mm
Offset	40mm
Swivel Interference	205mm
Overall Height	155mm
Swivel Radius	102.5mm
Hardness Of Tread	75±5° Shore D
Load Capacity (Dynamic)	250kgs
Load Capacity (Static)	375kgs
Temperature	-20°C to +80°C
Fork Type	Swivel Caster
Stainless	N/A
Electrical Conductivity	N/A
Anti-Static	N/A
Weight	1.34kgs
Standard	ISO22883

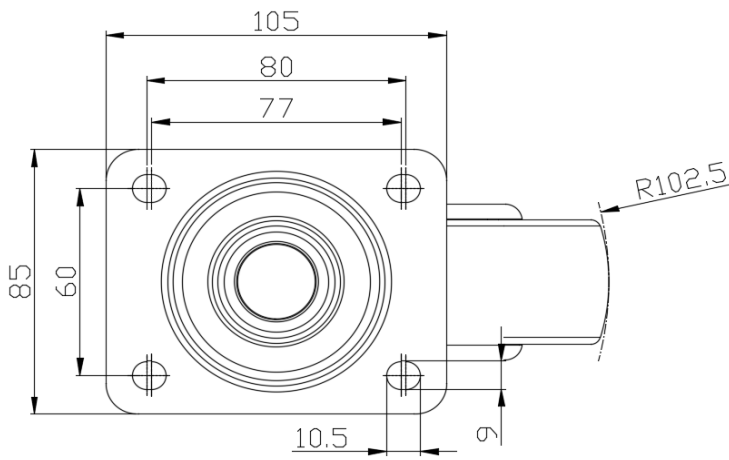
Advantages at a glance

Rolling Resistance	● ● ● ● ●
Operating Noise	● ● ○ ○ ○
Floor Surface Preservation	● ● ○ ○ ○

Dimensions



Mounting



* For any deviation between metric and imperial spec, please refer to the metric spec.