



1151 51 European Standard Base Plate Series

MRC (Transparent) Wheel Diameter × Wheel Width 125 x 40mm

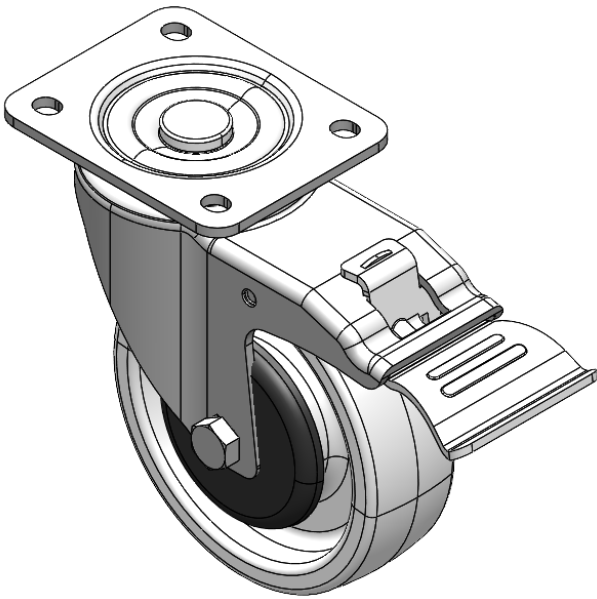
EAN

YJ-11510500074023

Equipped with double-brake, locking Casters. Riveted and Stamping Top Plate legs – 44.5 x 30mm (1-3/4" x 1-1/8") Bolt Hole Spacings.  
Zine-Plated surface, Top Plate type (4T) Mounting Type device.  
Reinforced Polypropylene Wheel Center and Wheel Tread.  
Transparent, Bearing – Ball Bearings.

Wheel surface: Thermoplastic (PA6)  
Wheel Center: Thermoplastic (PA6)

Drawings are for reference only and may differ from the product



Picture may differ from original product

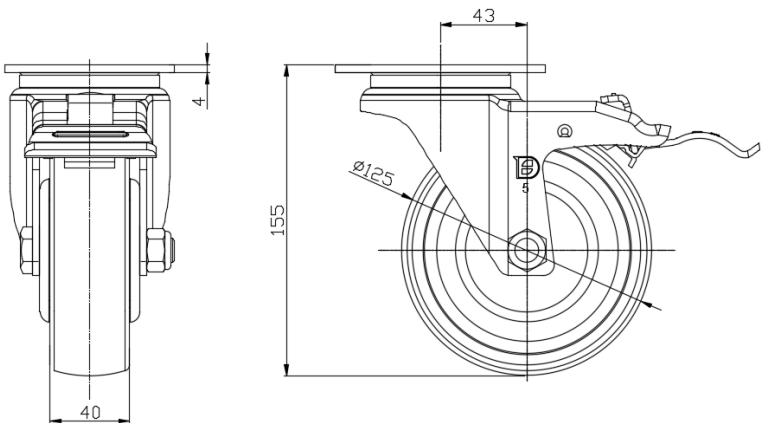
Technical Data

<input checked="" type="radio"/> Metric <input type="radio"/> Imperial	
Wheel Diameter	125mm
Wheel Width	40mm
Wheel Bearing	Wheels With Ball Bearings
Plate Size	105 x 85mm
Bolt Hole Spacing	80 x 60mm
Plate Hole	10.5 x 9mm
Offset	43mm
Swivel Interference	328mm
Overall Height	155mm
Swivel Radius	164mm
Hardness Of Tread	75±5° Shore D
Load Capacity (Dynamic)	250kgs
Load Capacity (Static)	375kgs
Temperature	-20°C to +80°C
Fork Type	Swivel Caster With Total Brake
Stainless	N/A
Electrical Conductivity	N/A
Anti-Static	N/A
Weight	1.49kgs
Standard	ISO22883

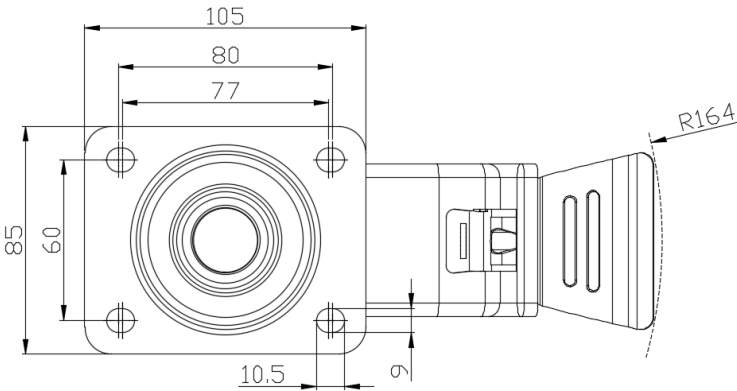
Advantages at a glance

Rolling Resistance	● ● ● ● ●
Operating Noise	● ● ○ ○ ○
Floor Surface Preservation	● ● ○ ○ ○

Dimensions



Mounting



\* For any deviation between metric and imperial spec, please refer to the metric spec.