



1151 51 European Standard Base Plate Series

All-purpose elastic wheel (black & blue) Wheel diameter × Wheel width 125×36 mm

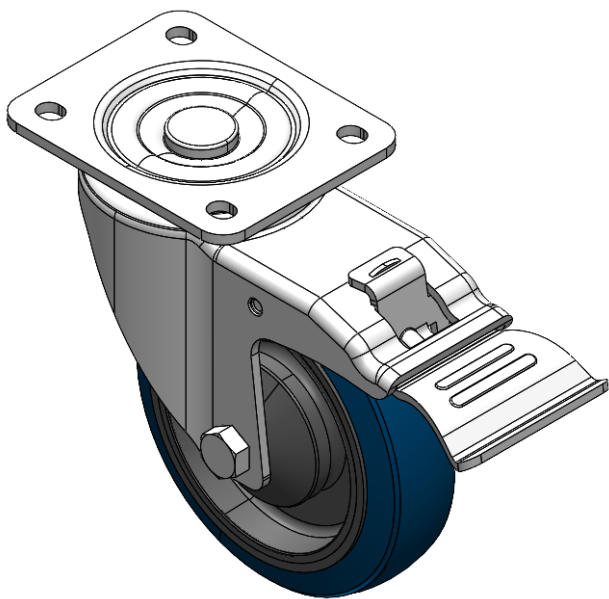
A

YJ-11510500454033

Equipped with double-brake, locking Casters. Riveted and Stamping Top Plate legs – 44.5 x 30mm (1-3/4" x 1-1/8") Bolt Hole Spacings.
Zine-Plated surface, Top Plate (4T) Mounting Type device.
High-Quality impact-resistant polypropylene Wheel Center, High-Quality Reinforced Polypropylene Rubber (TPR) Wheel Tread.
Black and blue, Bearing – Ball Bearings.

Wheel tread: Thermoplastic rubber elastomer (TPR)
Wheel Center: Made of high-quality impact-resistant polypropylene

Drawings are for reference only and may differ from the product



Picture may differ from original product

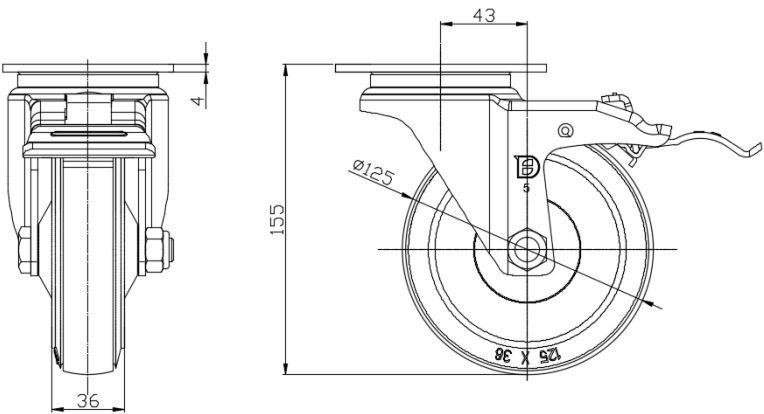
Technical Data

| | |
|--|--------------------------------|
| <input checked="" type="radio"/> Metric <input type="radio"/> Imperial | |
| Wheel Diameter | 125mm |
| Wheel Width | 36mm |
| Wheel Bearing | Wheels With Ball Bearings |
| Plate Size | 105 x 85mm |
| Bolt Hole Spacing | 80 x 60mm |
| Plate Hole | 10.5 x 9mm |
| Offset | 43mm |
| Swivel Interference | 328mm |
| Overall Height | 155mm |
| Swivel Radius | 164mm |
| Hardness Of Tread | 72±5° Shore A |
| Load Capacity (Dynamic) | 180kgs |
| Load Capacity (Static) | 270kgs |
| Temperature | -20°C to +60°C |
| Fork Type | Swivel Caster With Total Brake |
| Stainless | N/A |
| Electrical Conductivity | N/A |
| Anti-Static | N/A |
| Weight | 1.26kgs |
| Standard | ISO22883 |

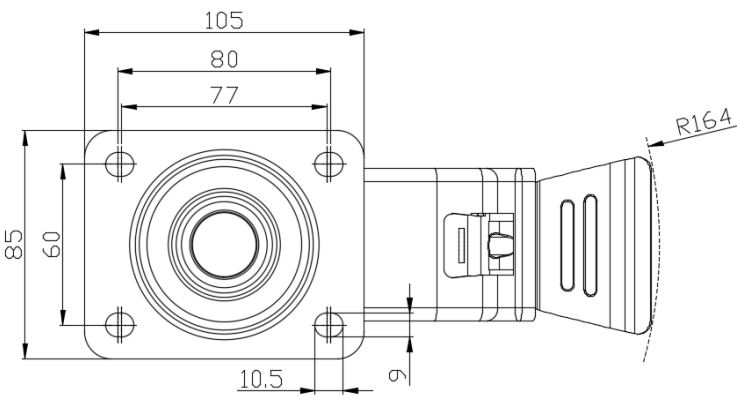
Advantages at a glance

| | |
|----------------------------|-----------|
| Rolling Resistance | ● ● ● ● ● |
| Operating Noise | ● ● ● ● ● |
| Floor Surface Preservation | ● ● ● ● ● |

Dimensions



Mounting



* For any deviation between metric and imperial spec, please refer to the metric spec.