

1151D Heavy Duty 1.5" Wide General Purposes Caster Series



W Resolute (black, dark gray) Wheel Diameter × Wheel Width 125 x 38mm

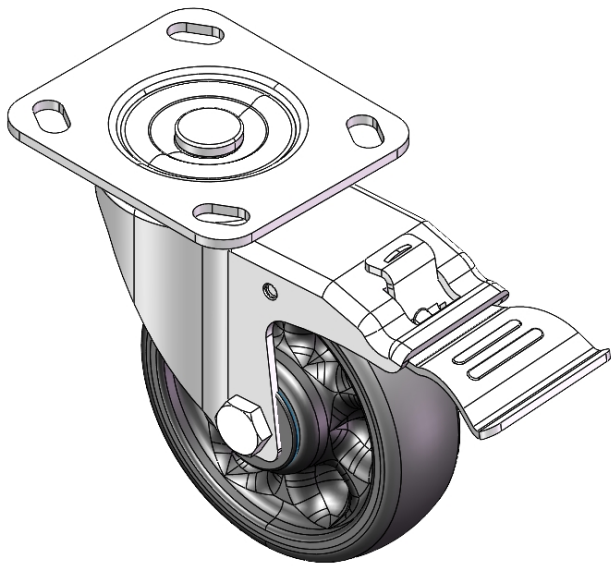
EAN

YJ-11510500454053

Castors with Total Brake Locking system. Top Plate Riveted Stamping Fork - 85 x 70mm (3-3/8" x 2-3/4") Bolt Hole Spacing Surface plating, Top Plate (4T) Mounting Type Reinforced impact resistant High-quality Impact Resistance Polypropylene Wheel Center,High-Quality Thermoplastic Rubber (TPR) Wheel Tread Dark grey, Bearing - Ball Bearing.

Wheel tread: Thermoplastic rubber elastomer (TPR)  
Wheel Center: Made of high-quality impact-resistant polypropylene

Drawings are for reference only and may differ from the product



Picture may differ from original product

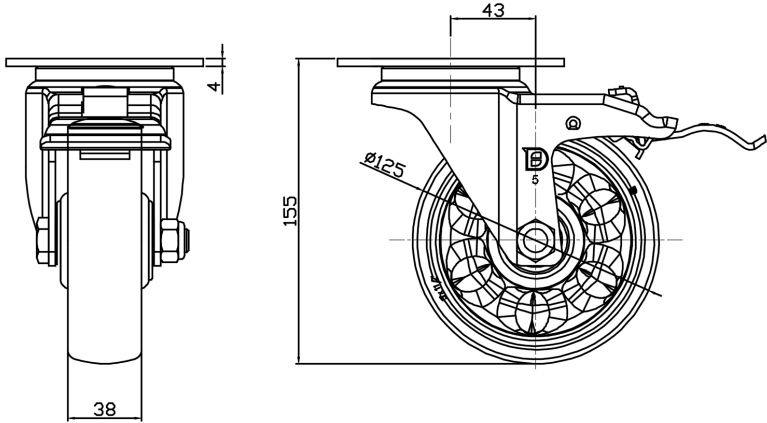
Technical Data

<input checked="" type="radio"/> Imperial <input type="radio"/> Metric	
Wheel Diameter	5 "
Wheel Width	1-1/2 "
Wheel Bearing	Wheels With Ball Bearings
Plate Size	4-9/16 " x 4 "
Bolt Hole Spacing	3-7/16 " x 2-13/16 "
Plate Hole	13/16 " x 3/8 "
Offset	1-3/4 "
Swivel Interference	13 "
Overall Height	6-1/8 "
Swivel Radius	6-1/2 "
Hardness Of Tread	72±5° Shore A
Load Capacity (Dynamic)	353lbs
Load Capacity (Static)	529lbs
Temperature	-4°F to +140°F
Fork Type	Swivel Caster With Total Brake
Stainless	N/A
Electrical Conductivity	N/A
Anti-Static	N/A
Weight	3.5lbs
Standard	ISO22883

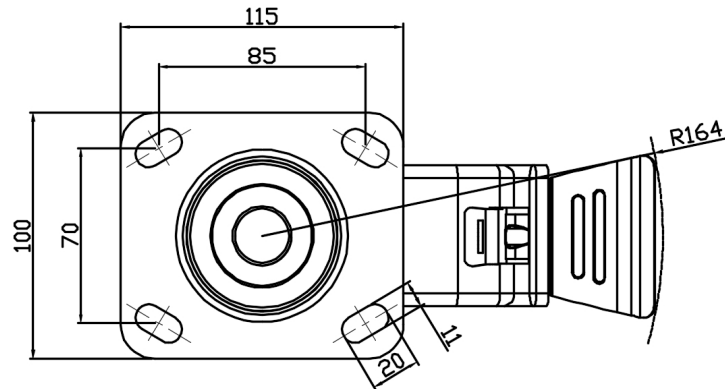
Advantages at a glance

Rolling Resistance	● ● ● ● ●
Operating Noise	● ● ● ● ●
Floor Surface Preservation	● ● ● ● ●

Dimensions



Mounting



\* For any deviation between metric and imperial spec, please refer to the metric spec.