

1151D Heavy Duty 1.5" Wide General Purposes Caster Series



MRC (Transparent) Wheel Diameter × Wheel Width 150 x 40mm

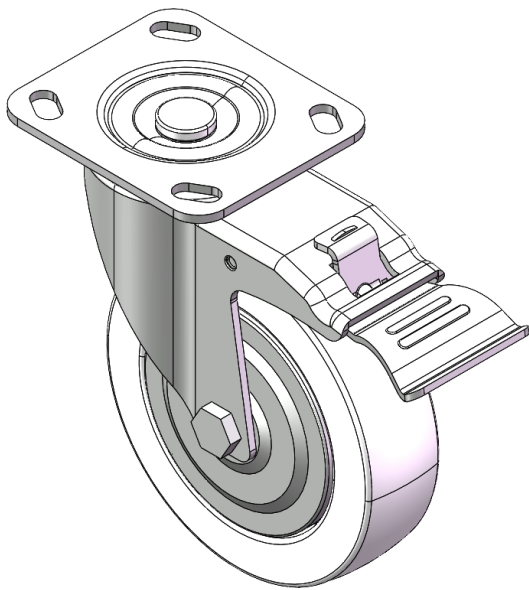
EAN

YJ-11510600074033

Castors with Total Brake Locking system. Top Plate Riveted Stamping Fork - 85 x 70mm (3-3/8" x 2-3/4") Bolt Hole Spacing Surface Zine-Plated, Top Plate (4T) Mounting Type device Reinforced Polypropylene and Wheel Tread Transparent, Bearing - Ball Bearing.

Wheel tread: Thermoplastic (PA6)
Wheel Center: Thermoplastic (PA6)

Drawings are for reference only and may differ from the product



Picture may differ from original product

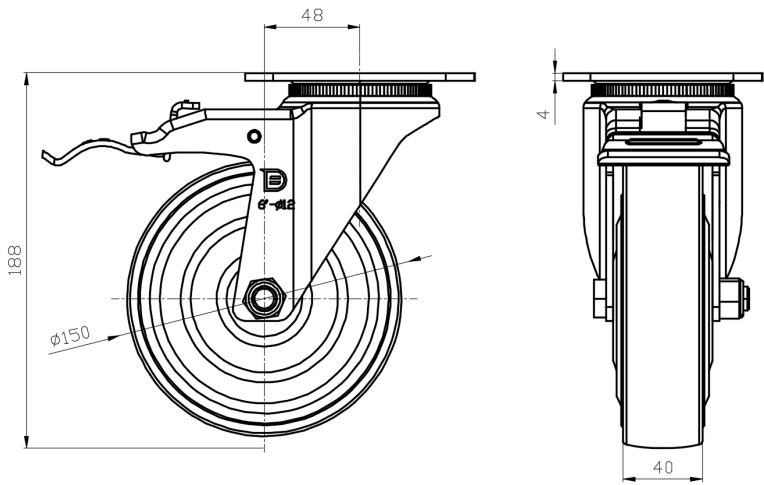
Technical Data

<input checked="" type="radio"/> Metric <input type="radio"/> Imperial	
Wheel Diameter	150mm
Wheel Width	40mm
Wheel Bearing	Wheels With Ball Bearings
Plate Size	115 x 100mm
Bolt Hole Spacing	85 x 70mm
Plate Hole	20 x 11mm
Offset	48mm
Swivel Interference	328mm
Overall Height	188mm
Swivel Radius	164mm
Hardness Of Tread	75±5° Shore D
Load Capacity (Dynamic)	350kgs
Load Capacity (Static)	525kgs
Temperature	-20°C to +80°C
Fork Type	Swivel Caster With Total Brake
Stainless	N/A
Electrical Conductivity	N/A
Anti-Static	N/A
Weight	2.08kgs
Standard	ISO22883

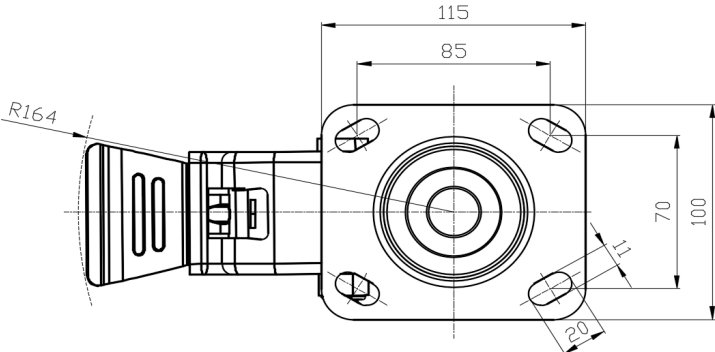
Advantages at a glance

Rolling Resistance	● ● ● ● ●
Operating Noise	● ● ○ ○ ○
Floor Surface Preservation	● ● ○ ○ ○

Dimensions



Mounting



* For any deviation between metric and imperial spec, please refer to the metric spec.