

1151D Heavy Duty 1.5" Wide General Purposes Caster Series



PU (red round) Wheel Diameter × Wheel Width 150 x 42mm

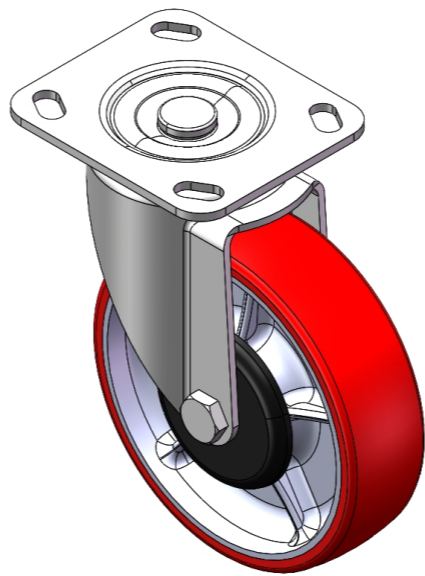
EAN

YJ-11510600332023

Swivel Caster with Riveted Fork and Stamping Fork with D-shaped hole. Zine-Plated, Fork-mounted (4T) Mounting Type system. Cast Iron Wheel Center with High Quality Polyurethane tread. Red Cast Iron finish, Bearing with Ball Bearing.

Wheel tread: Made of high-quality polyurethane
Wheel Center: cast iron core

Drawings are for reference only and may differ from the product



Picture may differ from original product

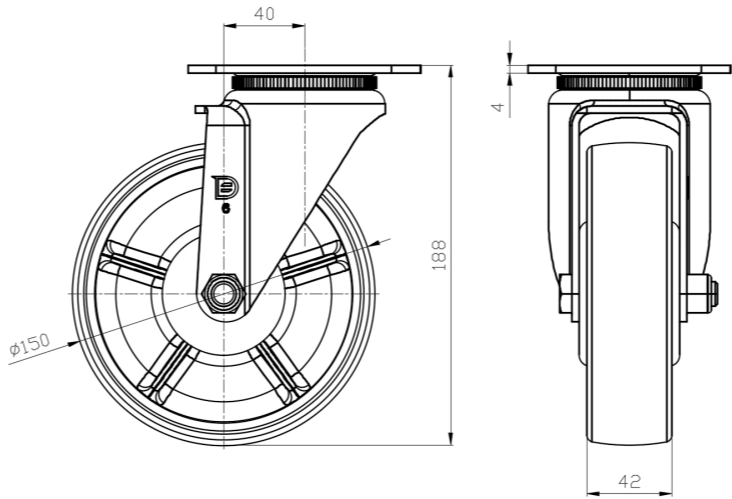
Technical Data

<input checked="" type="radio"/> Metric <input type="radio"/> Imperial	
Wheel Diameter	150mm
Wheel Width	42mm
Wheel Bearing	Wheels With Ball Bearings
Plate Size	115 x 100mm
Bolt Hole Spacing	85 x 70mm
Plate Hole	20 x 11mm
Offset	40mm
Swivel Interference	230mm
Overall Height	188mm
Swivel Radius	115mm
Hardness Of Tread	93±5° Shore A
Load Capacity (Dynamic)	350kgs
Load Capacity (Static)	525kgs
Temperature	-20°C to +70°C
Fork Type	Swivel Caster
Stainless	N/A
Electrical Conductivity	N/A
Anti-Static	N/A
Weight	2.58kgs
Standard	ISO22883

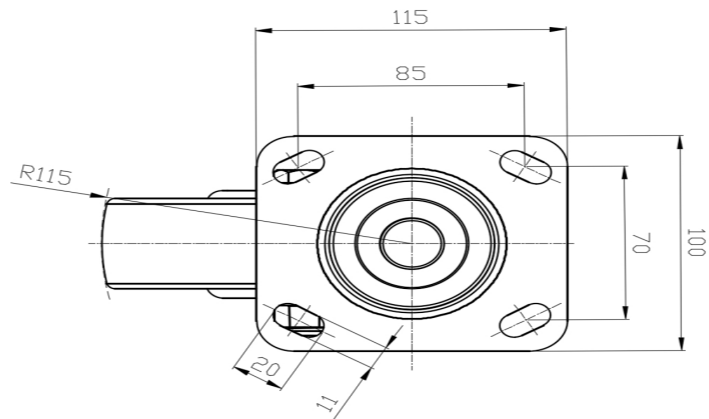
Advantages at a glance

Rolling Resistance	● ● ● ○ ○
Operating Noise	● ● ● ● ○
Floor Surface Preservation	● ● ● ● ○

Dimensions



Mounting



* For any deviation between metric and imperial spec, please refer to the metric spec.