

1154-R Light Duty Wire & Shelving/Display (Round Raceway) Series



Rubber wheel wheel diameter × wheel width 75 x 25mm

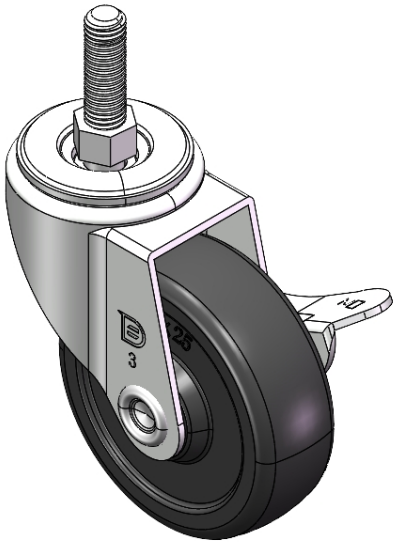
A

YJ-11540300066023

Equipped with side (wheel) brakes and a With locking system for the Casters. Stamping Fork with Riveted cores—3/8-16  
Zine-Plated surface, Mounting Type - Threaded Stem device  
Reinforced Polypropylene, High-Quality Resilient Rubber Wheel Tread  
Wheels—Plain Bearing

Wheel surface: High-quality elastic rubber  
Wheel Center: Thermoplastic (PA6)

Drawings are for reference only and may differ from the product



Picture may differ from original product

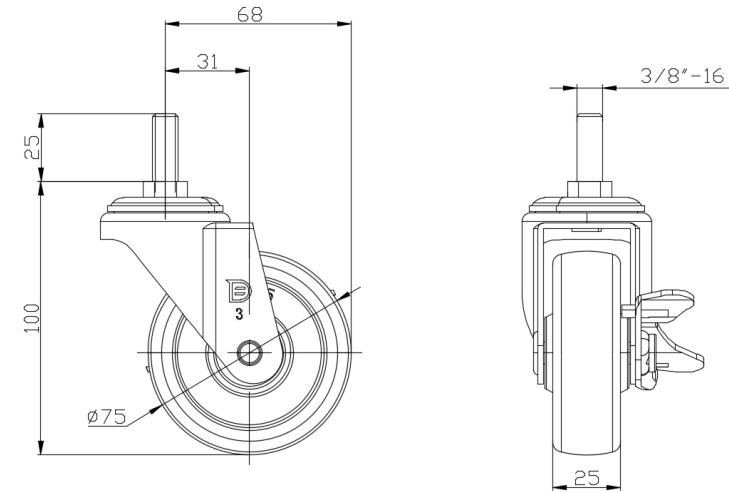
Technical Data

<input checked="" type="radio"/> Metric <input type="radio"/> Imperial	
Wheel Diameter	75mm
Wheel Width	25mm
Wheel Bearing	Wheel With Plain Bearing
Threaded Stem	3/8-16
Threaded Length	25mm
Offset	31mm
Swivel Interference	136mm
Overall Height	100mm
Swivel Radius	68mm
Hardness Of Tread	80±5° Shore A
Load Capacity (Dynamic)	50kgs
Load Capacity (Static)	75kgs
Temperature	-20°C to +120°C
Fork Type	Swivel Caster With Side Brake
Stainless	N/A
Electrical Conductivity	N/A
Anti-Static	N/A
Weight	0.42kgs
Standard	ISO22883

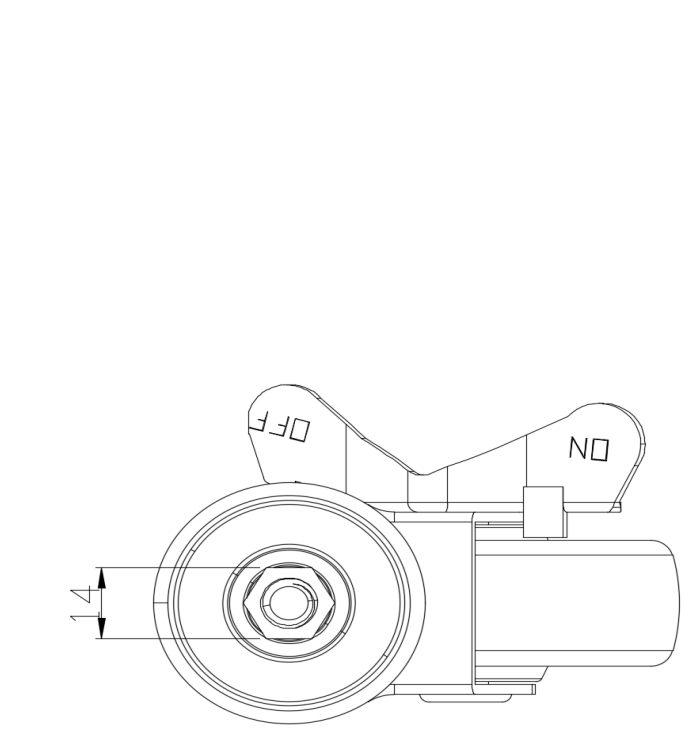
Advantages at a glance

Rolling Resistance	● ● ● ○ ○
Operating Noise	● ● ● ● ○
Floor Surface Preservation	● ● ● ● ○

Dimensions



Mounting



\* For any deviation between metric and imperial spec, please refer to the metric spec.