

1154-R Light Duty Wire & Shelving/Display (Round Raceway) Series



Rubber wheel wheel diameter × wheel width 75 x 25mm

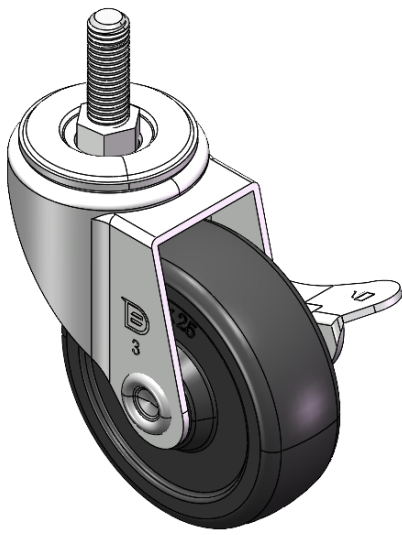
A

YJ-11540300066033

Equipped with side (wheel) brakes and a With locking system. Stamping, Threaded Stem feet—M10-P1.5 Zine-Plated surface, Mounting Type - Threaded Stem. Reinforced Polypropylene, High-Quality Resilient Rubber rim. Wheels—Plain Bearing.

Wheel surface: High-quality elastic rubber
Wheel Center: Thermoplastic (PA6)

Drawings are for reference only and may differ from the product



Picture may differ from original product

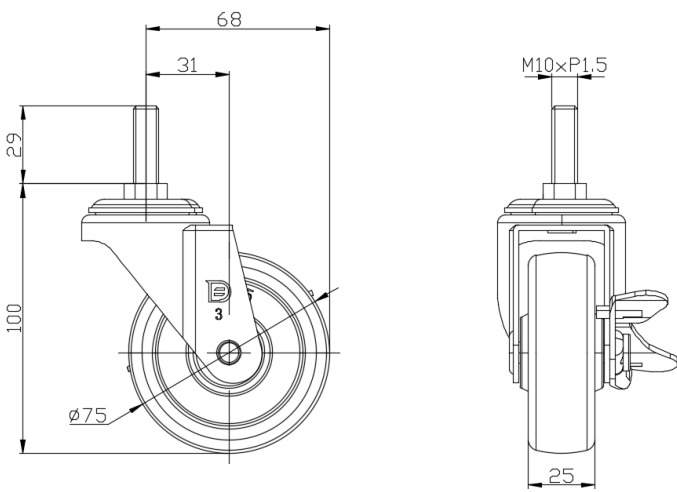
Technical Data

<input checked="" type="radio"/> Imperial <input type="radio"/> Metric	
Wheel Diameter	3 "
Wheel Width	5-1/25 "
Wheel Bearing	Wheel With Plain Bearing
Threaded Stem	M10-P1.5
Threaded Length	1-3/16 "
Offset	1-1/4 "
Swivel Interference	5-7/16 "
Overall Height	4 "
Swivel Radius	2-11/16 "
Hardness Of Tread	80±5° Shore A
Load Capacity (Dynamic)	110lbs
Load Capacity (Static)	165lbs
Temperature	-4°F to +248°F
Fork Type	Swivel Caster With Side Brake
Stainless	N/A
Electrical Conductivity	N/A
Anti-Static	N/A
Weight	0.9lbs
Standard	ISO22883

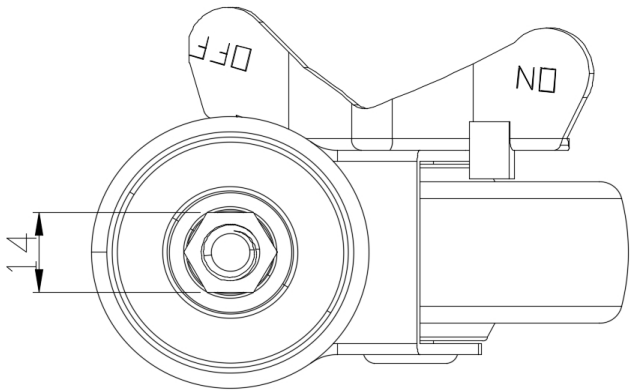
Advantages at a glance

Rolling Resistance	● ● ● ○ ○
Operating Noise	● ● ● ● ○
Floor Surface Preservation	● ● ● ● ○

Dimensions



Mounting



* For any deviation between metric and imperial spec, please refer to the metric spec.