



1168 Levelling Caster Series

MRC (black) Wheel Diameter × Wheel Width 75 x 45 mm

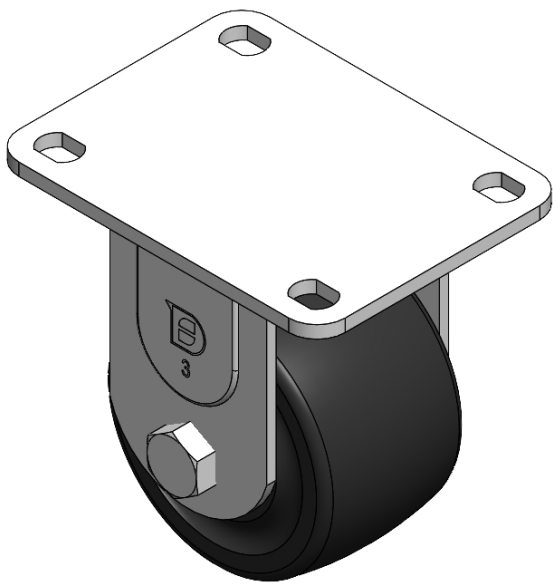
EAN

YJ-11680250051013

Rigid Caster, Welded-on footplate with European standard holes Zine-Plated, Top Plate (4T) Mounting Type system Reinforced Polypropylene and tread Black, Bearing—Ball Bearing.

Wheel Tread: Thermoplastic (PA6)
Wheel Center: Thermoplastic (PA6)

Drawings are for reference only and may differ from the product



Picture may differ from original product

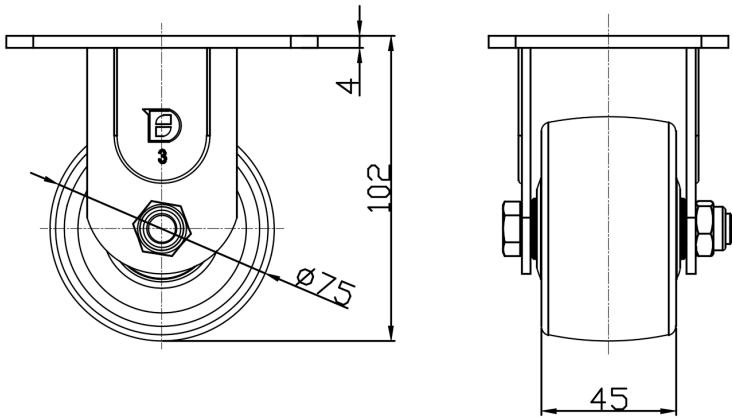
Technical Data

<input checked="" type="radio"/> Imperial <input type="radio"/> Metric	
Wheel Diameter	3 "
Wheel Width	1-13/16 "
Wheel Bearing	Wheels With Ball Bearings
Plate Size	4-1/8 " x 3-3/16 "
Bolt Hole Spacing	2-1/4 " x 2-3/8 "
Plate Hole	1/2 " x 23/64 "
Overall Height	4-1/16 "
Hardness Of Tread	75±5° Shore D
Load Capacity (Dynamic)	661lbs
Load Capacity (Static)	992lbs
Temperature	-4°F to +176°F
Fork Type	Rigid Caster
Stainless	N/A
Electrical Conductivity	N/A
Anti-Static	N/A
Weight	1.7lbs
Standard	ISO22883

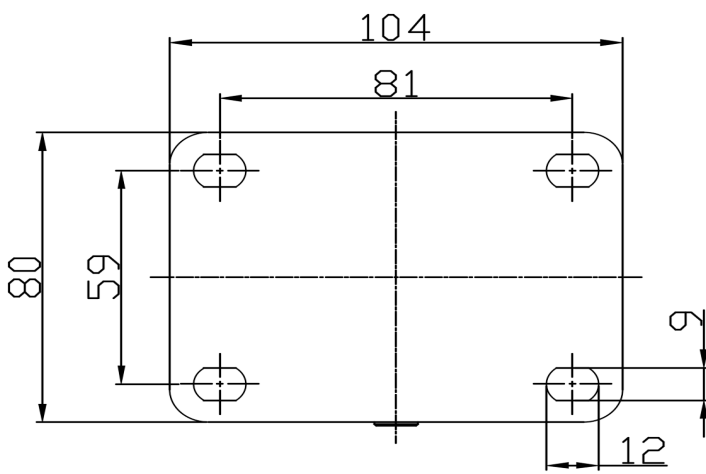
Advantages at a glance

Rolling Resistance	● ● ● ● ●
Operating Noise	● ● ○ ○ ○
Floor Surface Preservation	● ● ○ ○ ○

Dimensions



Mounting



* For any deviation between metric and imperial spec, please refer to the metric spec.