



1168 Levelling Caster Series

MRC (black) Wheel Diameter × Wheel Width 64 x 45mm

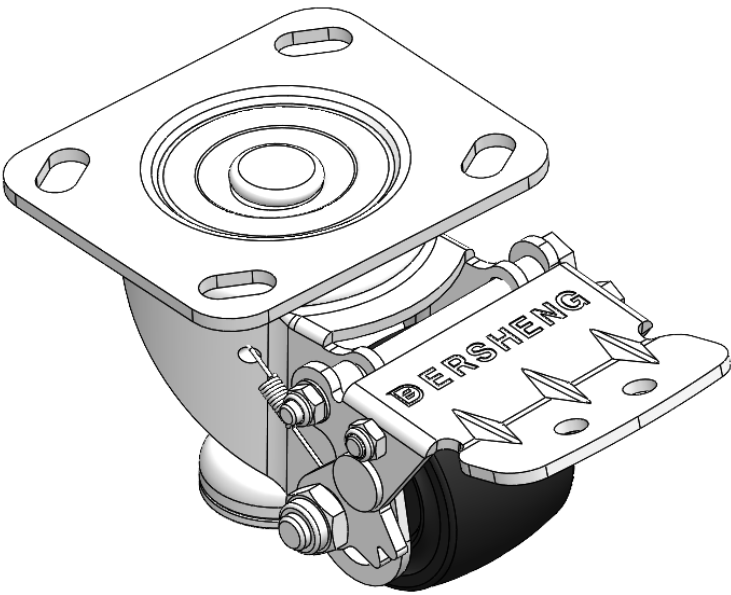
EAN

YJ-11680250052043

Height Adjustable Leveling Caster. Top Plate Riveted and Stamping 85 x 70mm (3-3/8" x 2-3/4") Bolt Hole Spacing, Short Pedal. Zine-Plated, Top Plate (4T) Mounting Type mechanism with Height Adjustable Stand. Reinforced Polypropylene and tread. Black, Bearing—Ball Bearing.

Wheel Tread: Thermoplastic (PA6)  
Wheel Center: Thermoplastic (PA6)

Drawings are for reference only and may differ from the product



Picture may differ from original product

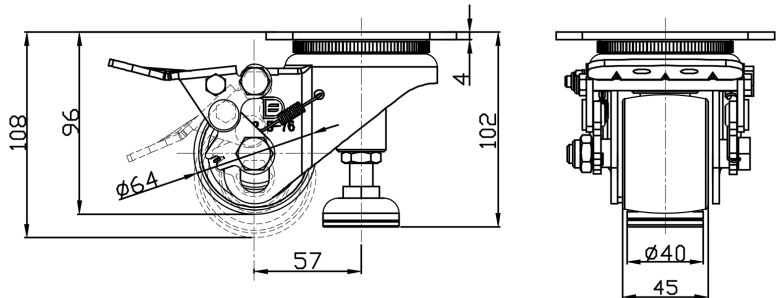
Technical Data

<input checked="" type="radio"/> Imperial <input type="radio"/> Metric	
Wheel Diameter	2-9/16
Wheel Width	1-13/16 "
Wheel Bearing	Wheels With Ball Bearings
Plate Size	4-9/16 " x 4 "
Bolt Hole Spacing	3-3/8 " x 2-3/4 "
Plate Hole	13/16 " x 3/8 "
Offset	2-1/4 "
Swivel Interference	10-11/16 "
Overall Height	4-1/16 "
Swivel Radius	5-7/16 "
Hardness Of Tread	75±5° Shore D
Load Capacity (Dynamic)	441lbs
Load Capacity (Static)	2205lbs
Temperature	-4°F to +176°F
Fork Type	Swivel Caster
Stainless	N/A
Electrical Conductivity	N/A
Anti-Static	N/A
Weight	4.1lbs
Standard	ISO22883

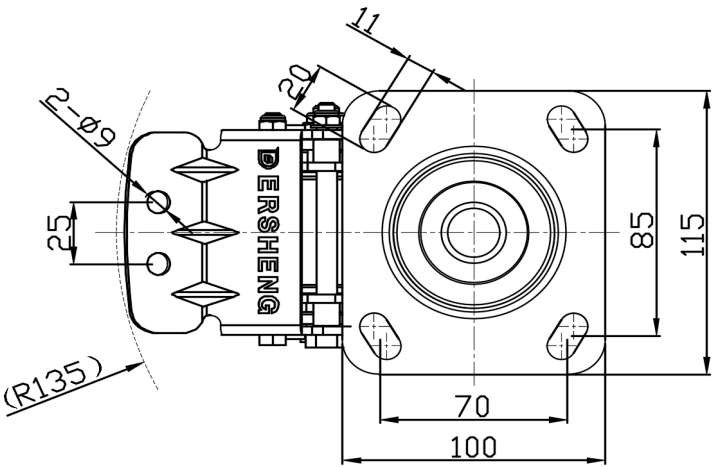
Advantages at a glance

Rolling Resistance	● ● ● ● ●
Operating Noise	● ● ○ ○ ○
Floor Surface Preservation	● ● ○ ○ ○

Dimensions



Mounting



\* For any deviation between metric and imperial spec, please refer to the metric spec.