



1168 Levelling Caster Series

QPU (brown round) Wheel Diameter × Wheel Width 75 × 45mm

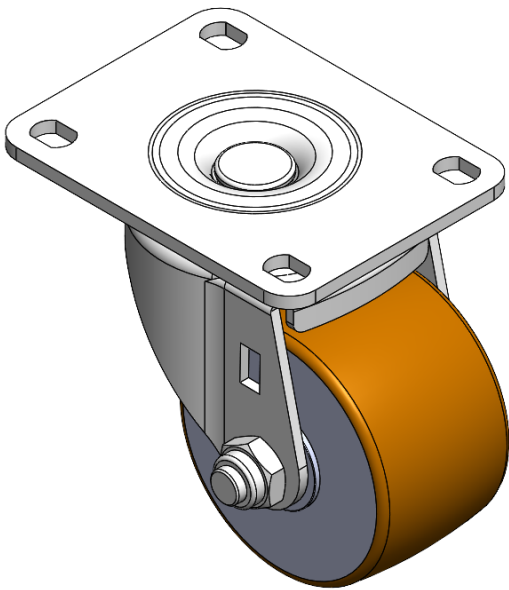
EAN

YJ-11680250532053

Swivel Caster with Riveted, Stamping Fork and European standard holes. Zine-Plated, Top Plate (4T) Mounting Type system. Cast Iron Wheel Center with High Quality Polyurethane tread. Brown color. Bearing: Ball Bearing.

Wheel Tread: high quality polyurethane  
Wheel Center: cast iron core

Drawings are for reference only and may differ from the product



Picture may differ from original product

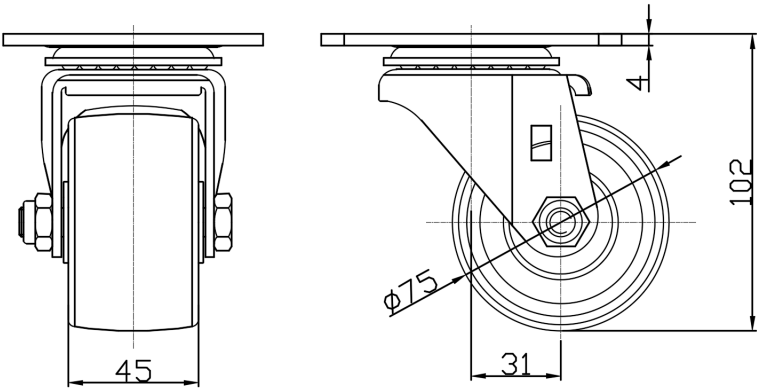
Technical Data

<input checked="" type="radio"/> Imperial <input type="radio"/> Metric	
Wheel Diameter	3 "
Wheel Width	1-13/16 "
Wheel Bearing	Wheels With Ball Bearings
Plate Size	4-1/8 " x 3-3/16 "
Bolt Hole Spacing	2-1/4 " x 2-3/8 "
Plate Hole	1/2 " x 23/64 "
Offset	1-1/4 "
Swivel Interference	5-9/16 "
Overall Height	4-1/16 "
Swivel Radius	2-13/16 "
Hardness Of Tread	92±5° Shore A
Load Capacity (Dynamic)	661lbs
Load Capacity (Static)	992lbs
Temperature	-4°F to +158°F
Fork Type	Swivel Caster
Stainless	N/A
Electrical Conductivity	N/A
Anti-Static	N/A
Weight	3.1lbs
Standard	ISO22883

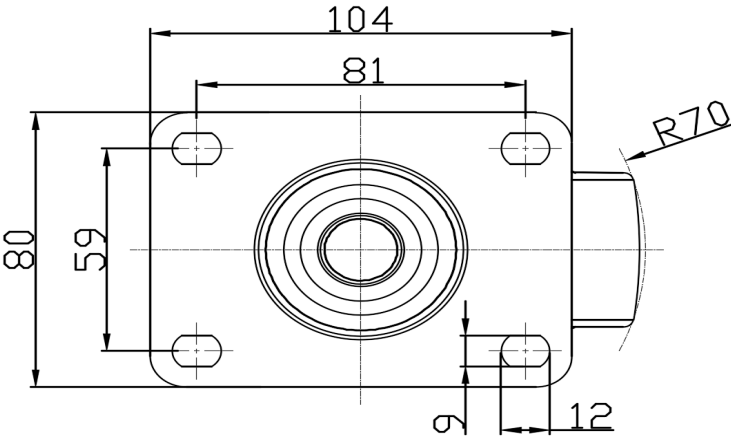
Advantages at a glance

Rolling Resistance	● ● ● ● ●
Operating Noise	● ● ● ● ●
Floor Surface Preservation	● ● ● ● ●

Dimensions



Mounting



\* For any deviation between metric and imperial spec, please refer to the metric spec.